

Display & Cove system for long runs!

The ultimate solution for extending long run lengths in low voltage systems



PRODUCT FEATURES

- RedDot Award Winner 2014
- UltraSlim Profile LED with Power Track
- Enables Extended Run Length with Single Power Point
- Fixtures Snap Onto Power Track with Seamless Illumination
- Compatible with 24V Constant Voltage DC Driver and 3rd Party Controls
- Can Be Used As Power Track/Bus System for all DC FLX Collection
- Compatible Rail Mounted Mounting Spot

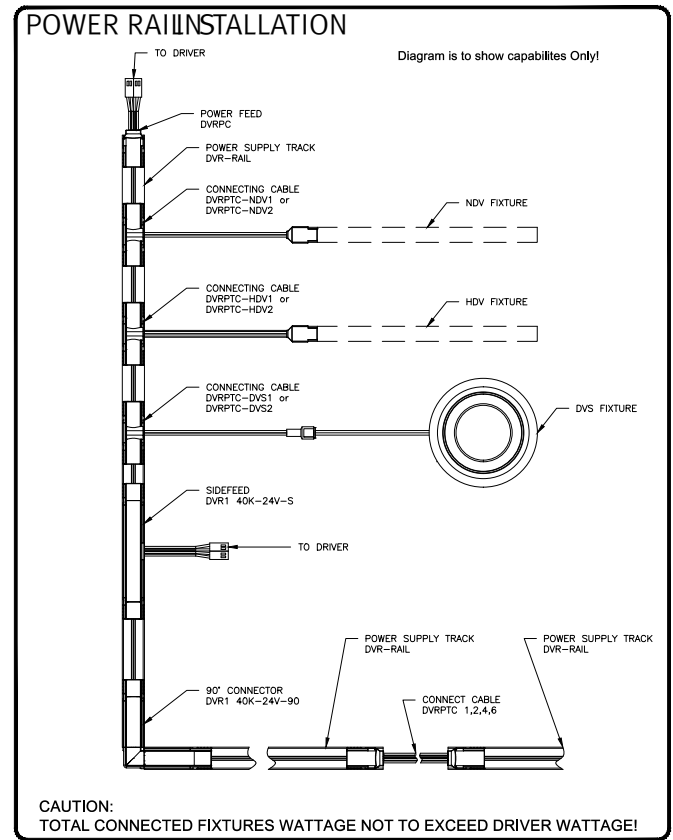
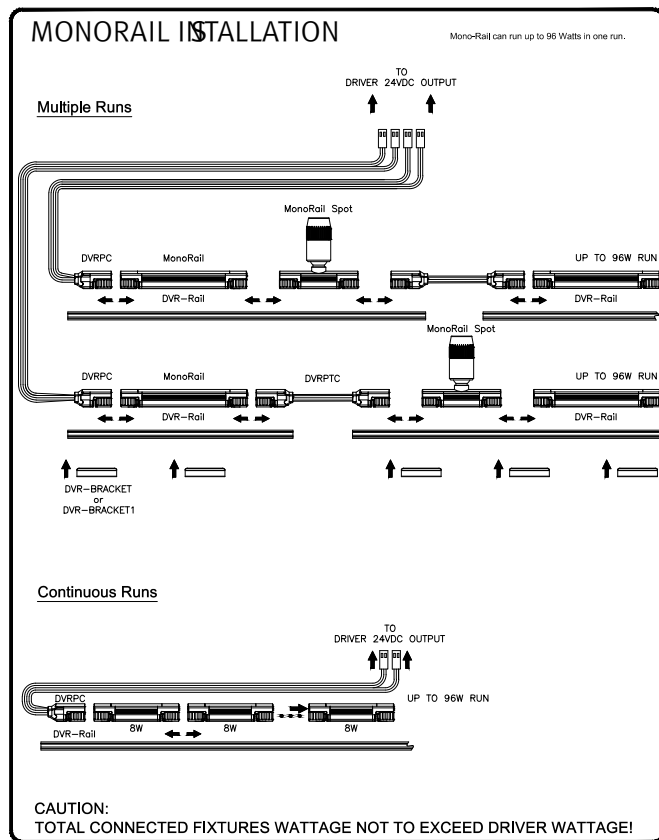
PRODUCT SPECIFICATIONS

- Voltage: DC 24V
- Operating Temperature: 32~113 °F (0~45 °C)
- Lamp Life: 40,000 hrs / 70%
- Available Color: 2700K, 3000K, 4000K, 6000K
- Color Rendering: Ra > 80
- Energy Efficiency: 75 Lm/W
- Max. connection

- MonoRail: 200W in one run (single powerfeed)
- Beam Angle: 120 °
- Finish: Natural Aluminum and Black
- Warranty: 5 year Warranty
- Certifications



SPECIFICATION DIAGRAM



SPECIFICATION GUIDE FOR MONORAIL INSTALLS COMPLETE SPEC CODE BELOW FOR POWER RAIL INSTALLS ORDER SEPARATELY ON PAGE 2

MODEL	COLOR	LENS	MOUNTING	CONFIGURATION	RUN LENGTH	DRIVER	CONTROLS	VOLTAGE
DVR					ft.			
DVR	27K -2700 K 30K -3000 K 35K -3500 K 40K -4000 K 60K -6000 K	ST -Flat Frosted RM -Round Milky SM -Square Milky	TAP - Adhesive Tape BKT - Side Fixing BK1 - Center Fixing	S -Straight V -Varies*	RUN LENGTH IN FEET Fill out for every run section	CP - Cable/Plug HW - Hard Wire TD - 3rd Party Drivers Consult Factory	NDM Non-Dim IDM Inline Dim FDC 0-10V Interface FPH Forward Phase	100V 120V 230V 277V
*DRAWINGS & RUN LENGTH REQUIRED								

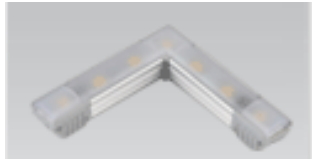
COMPONENTS FOR ADDITIONAL COMPONENTS ENTER QUANTITY BELOW



MonoRail [xx] Color Temp
 _____ DVR1-__K-24V (1W) ~4"
 _____ DVR4-__K-24V (4W) ~1Ft
 _____ DVR4-__K-24V (8W) ~2Ft



Side Feed [xx] Color Temp
 _____ DVR1-__K-24V (1W) ~4"



90 Connector [xx] Color Temp
 _____ DVR1-__K-24V-90 (1W)



MonoRailSpot [xx] Color Temp
 _____ DVRS1-__K-24V (1W)



Dimming Interface
 100W 0/1-10V Signal
 _____ FDC-L10



6 Port Hub
 _____ D6P-HUB
 Included with Cord & Plug drivers
 Order separately for HardWire or 3rd

CORD & PLUG DRIVERS (100V to 230V)

_____ FLC15-24V/XL _____ FLC30-24V/XL _____ FLC75-24V/



Power Feed
 _____ DVRPC



Connect Cable
 _____ DVRPTC (6")
 _____ DVRPTC1 (1')
 _____ DVRPTC2 (2')
 _____ DVRPTC4 (4')
 _____ DVRPTC6 (6')



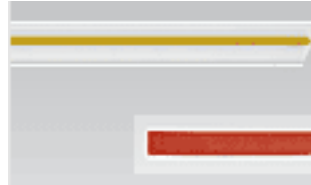
Connecting Cable
 _____ DVRPTC-DS1 (1')
 _____ DVRPTC-DS2 (2')



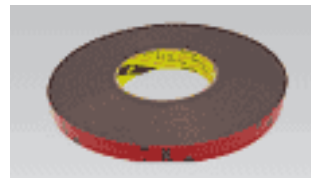
Connecting Cable
 _____ DVRPTC-NDV1 (1')
 _____ DVRPTC-NDV2 (2')



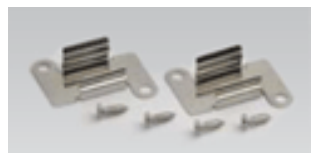
Connecting Cable
 _____ DVRPTC-HDV1 (1')
 _____ DVRPTC-HDV2 (2')



Power Supply Track
 _____ DVR-RAIL (1.2m) ~3Ft
 _____ DVR-RAIL (20m) ~60Ft



Adhesive Tape
 _____ Adhesive Tape



Mounting Bracket
 _____ DVR-BRACKET



Mounting Bracket
 _____ DVR-BRACKET1



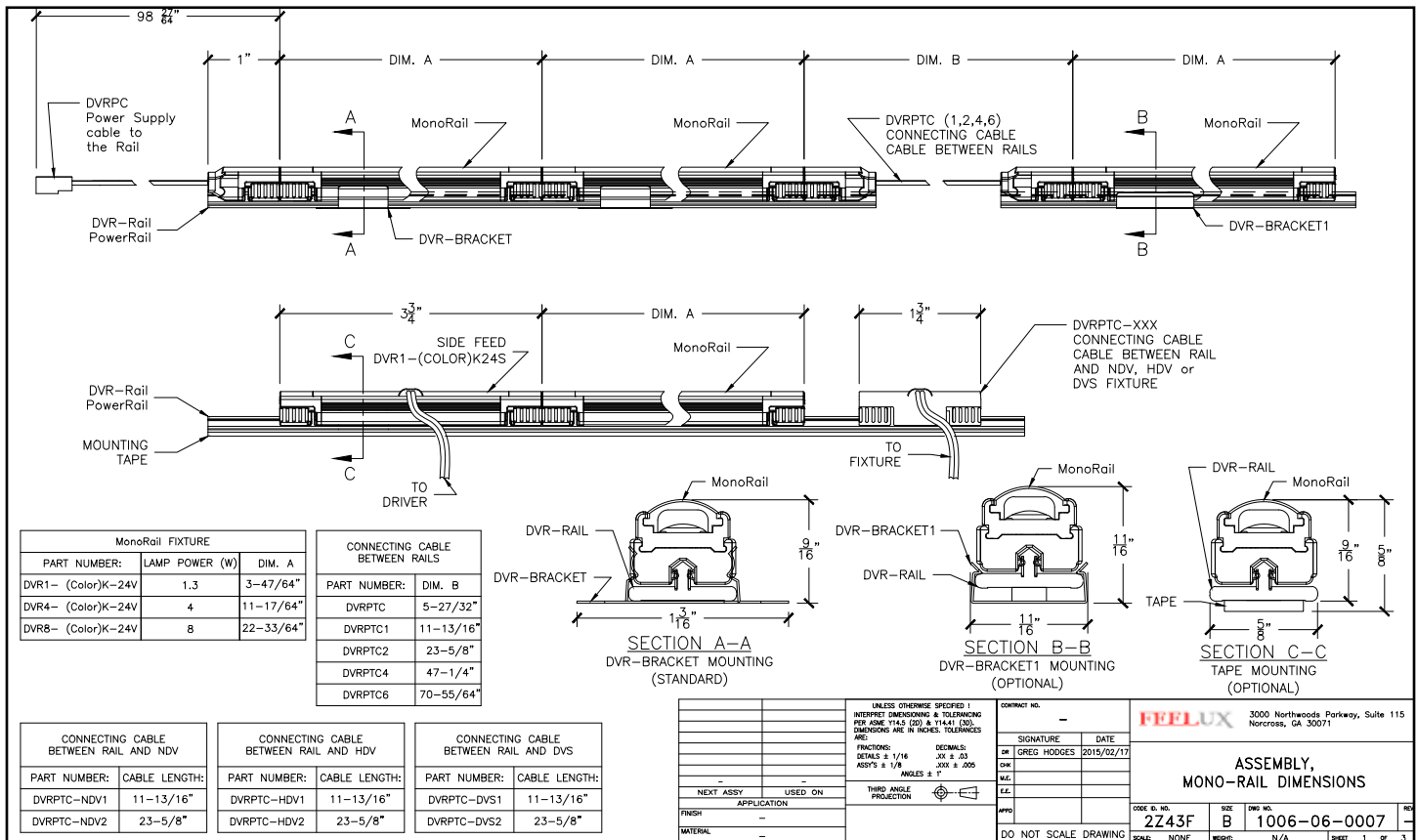
End Cap
 _____ DVR-CAP

Consult Factory for 3rd Party Drivers

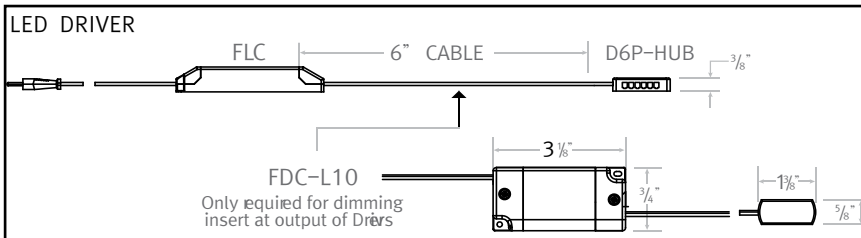
HARDWIREDRIVER CONTACT FACTORY

OPTIONS FIXTURE & ACCESSORIES DIMENSIONS

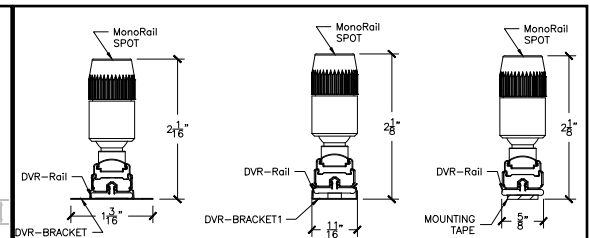
INSTALLATION DIAGRAM SHOWN HERE FOR DIMENSION PURPOSES ONLY REFER TO PAGE 1 FOR SPECIFICATION GUIDE



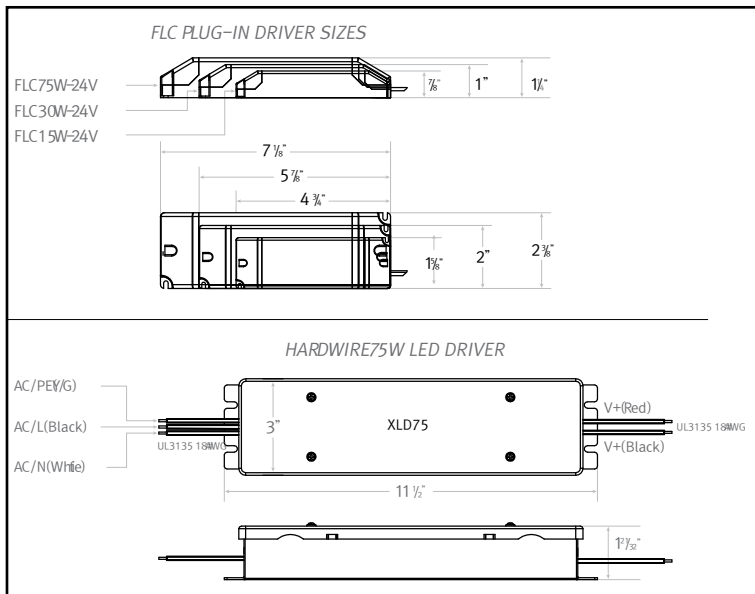
DIMMING OPTIONS



DVR SPOT



DRIVER OPTIONS



DVR CORNER

