

Please read before assembly and installation of Feelux product

1. Before attempting to install or use fixture, read and understand the installation instructions and safety labels. If you have any questions, please contact Feelux Technical support at 678-668-7005 ext 4.
2. Feelux product must be installed by a qualified electrician in accordance with all national and local electrical and construction codes and regulations.
3. Ensure that the main power supply is off before installing or wiring a fixture.
4. Ensure that the power to the series is off before connecting or disconnecting individual fixtures.
5. Do not use a fixture if the unit, lens, housing or power cables are damaged.
6. Do not attempt to repair. Fixtures have no serviceable parts and there is risk of shock.
7. Do not use a fixture for any voltage for which it is not rated. Do not exceed the specified voltage and current input for any fixtures.
8. To complete cable and fixture connections, press together until there is an audible click.
9. To disconnect, twist apart. Do not pull apart.
10. The screws included are for millwork. Please use the appropriate screws for the application.
11. If using magnetic mounting, ensure that magnets and plates are properly aligned.
12. This device complies with Part 15 of the FCC rules.
13. Class B Digital Apparatus complies with Canadian ICES-003
14. MonoRail fixtures are damp rated and closet approved.

Approved Drivers and Transformers

MonoRail can be installed with the following approved drivers/transformers/power supplies:

- Feelux FLC and XLD Series Drivers
- Qtran Q6S, Q6M, QTM, QTM eLED. When dimming QTran QTM DC + CAP may be required.
- Eklipse Light Manager
- Lutron
- Justin

Other drivers have not been tested and will not comply with the Feelux warranty.

Please read before assembly and Installation of Feelux Product (Continued)**Splicing**

When using Hardwire Drivers , the driver end of the power feed cable is cut and spliced. DVRPC and SIDEFEED power cables are 8Ft long. Splice point connections to be located at 8Ft max from first fixture or sidefeed fixture. Drivers can be remote located. Contractor to provide low voltage wiring for remote distance application. Contractor must test for 24VDC at all splice points. Polarity must be followed and is:

MonoRail: See page 4

Lead: Gray Stripes - Negative

Lead: Writing - Positive

Lead: xxxxx - Negative

Lead: +++++ - Positive

Jumpers

Jumpers cannot be cut or spliced at any time without written permission from Feelux.

MonoRail Dimming:

Please insure dimming signal compatibility prior to installation.

0 - 10V:

- ☒ Feelux FLC Drivers require FDC-L10 Dimming Interface
- ☒ Feelux XLD Drivers require FDC-L10 Dimming interface
- ☒ Q-Tran QTM-eLED require FDC-L10 Dimming Interface
- ☒ EKLIPSE, Does not require Dimming Interface

FORWARD PHASE:

- ☒ Q-Tran Q6S-DC Drivers, DC + CAPACITOR MAY BE REQUIRED
- ☒ Q-Tran QTM-DC Drivers, DC + CAPACITOR MAY BE REQUIRED
- ☒ Justin Drivers

DMX:

- ☒ Eclipse Drivers

Step 1. Verify electrical plan.

1. Calculate the number of fixtures each circuit can support based on: model of fixture, circuit load and cable length.
2. MonoRail can be loaded to 96W before side feed unit is required.
3. If you have questions, contact your local Feelux representative or Feelux.

Step 2. Check that all components are on site.

Step 3. Installation / Mounting

Always requires two person installation for fixture runs longer than 4 feet!

Mono-Rail are shipped with Standard Mounting Brackets and Magnetic Plates.

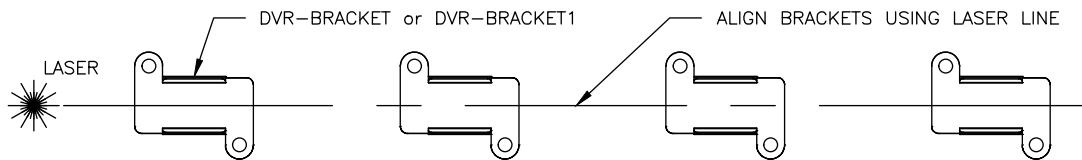
Angled Mounting Brackets are ordered separately.

Brackets are to be installed within 2" from ends of the unit to support the junction point.

For fixture units of 2Ft or longer install a 3rd bracket near the middle.

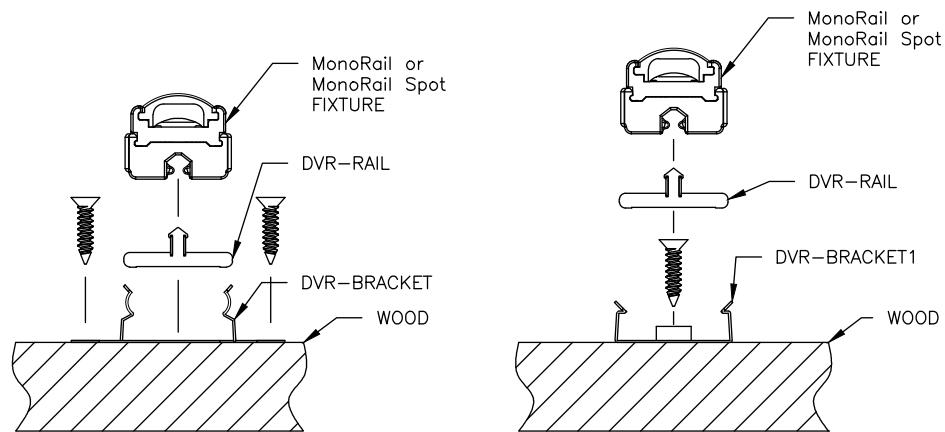
Bracket 3 is included and must be installed at all connection points.

Align all brackets using laser line



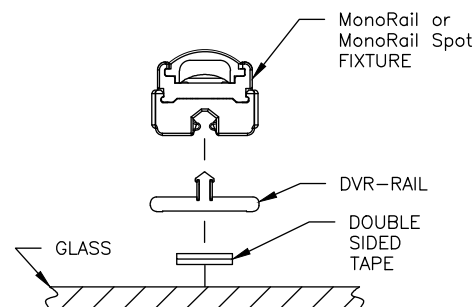
Mounting Option: Standard Brackets
for use on wood surfaces.

1. Assemble fixtures
2. Align / Install Brackets using laser line
3. Snap DVR-RAIL into brackets
4. Snap fixtures onto DVR-RAIL



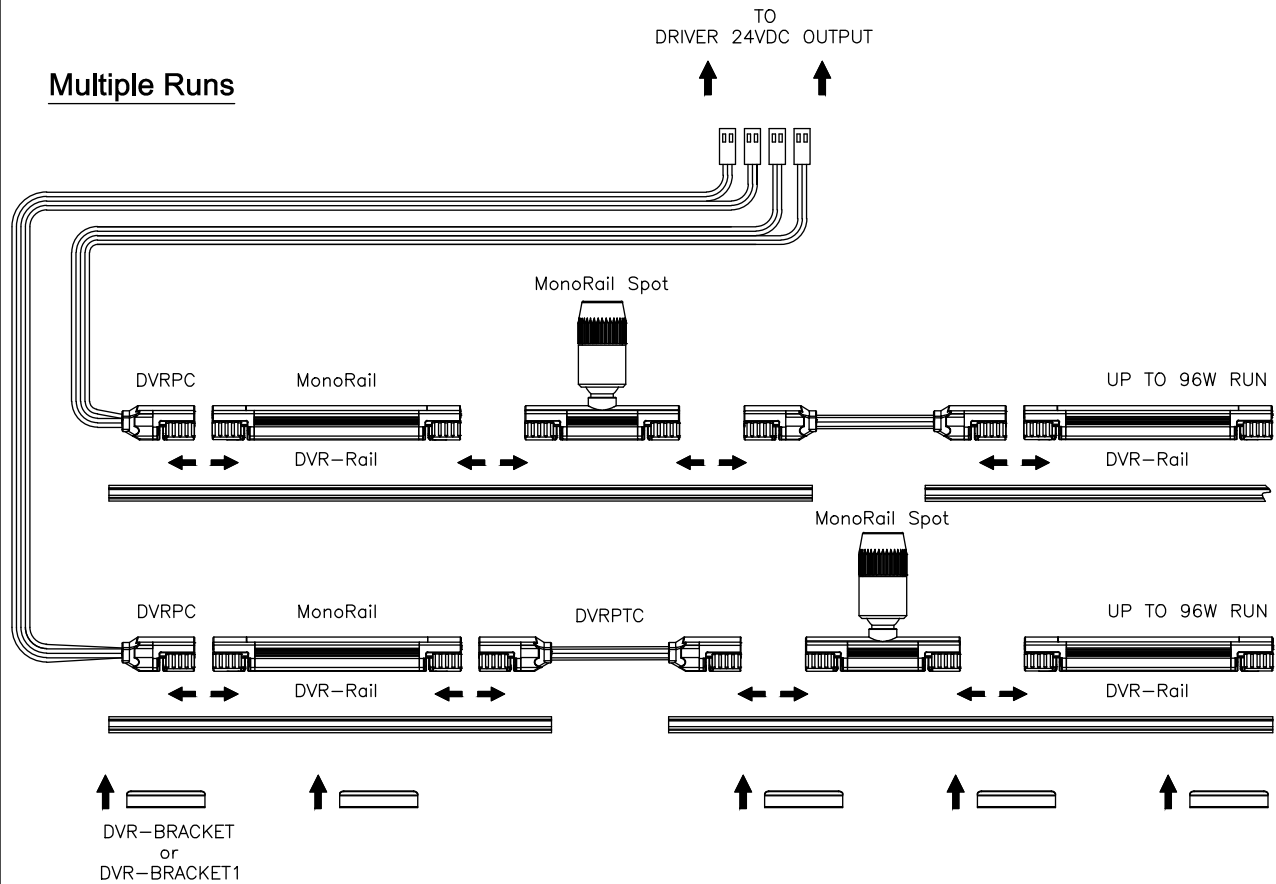
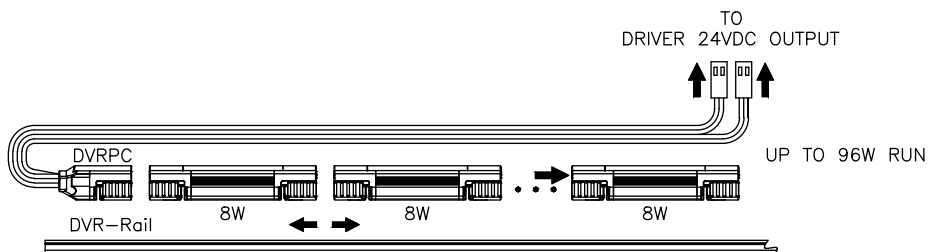
Mounting Option: Tape Mounting
to be used **ONLY** on glass surfaces.
ONLY on horizontal positions.

1. Place Tape on back of DVR-RAIL
2. Peel off double stick tape
3. Holding the DVR-RAIL press the exposed tape side to the glass surface
4. Snap fixture onto DVR-RAIL



Step 4. Connecting Fixtures:

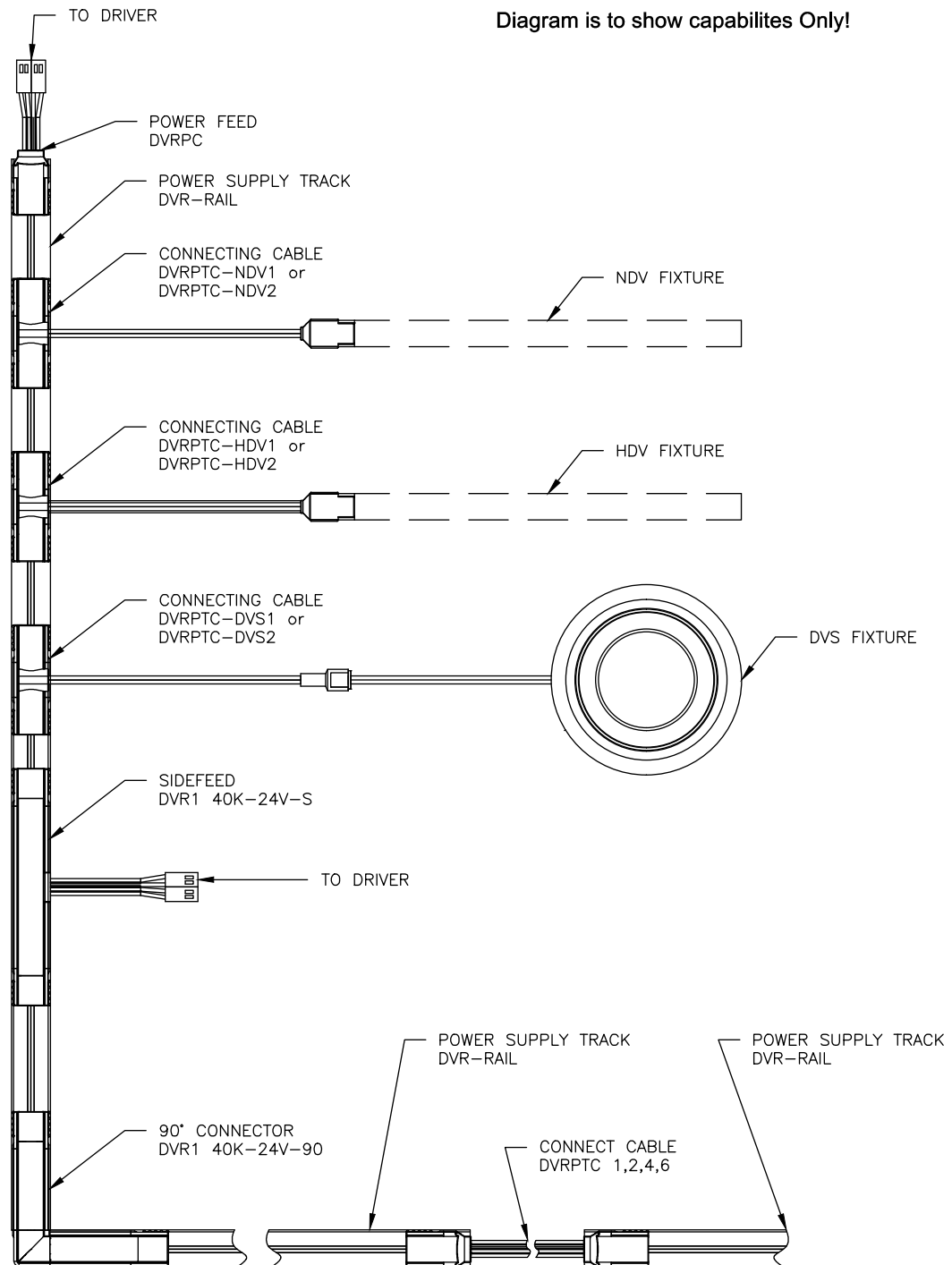
Mono-Rail can run up to 96 Watts in one run.

Multiple Runs**Continuous Runs**

CAUTION:
TOTAL CONNECTED FIXTURES WATTAGE NOT TO EXCEED DRIVER WATTAGE!

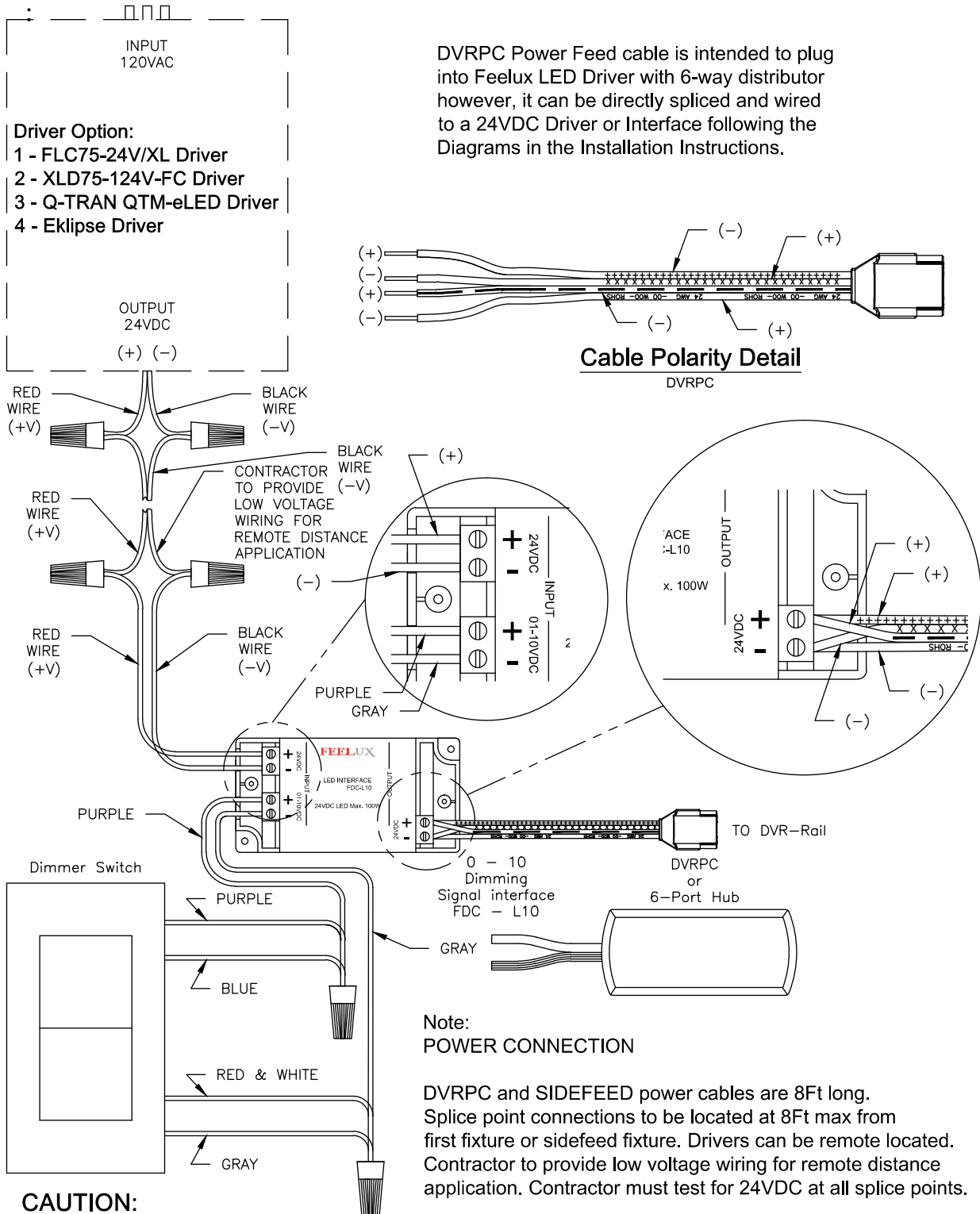
Step 4. Connecting Accessories :

Diagram is to show capabilities Only!



CAUTION:
TOTAL CONNECTED FIXTURES WATTAGE NOT TO EXCEED DRIVER WATTAGE!

Step 4. Driver and Fixture Installation (Continued) 0 - 10V DIMMING

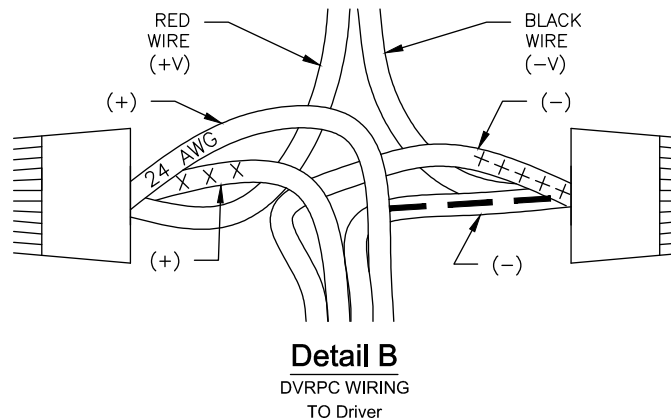
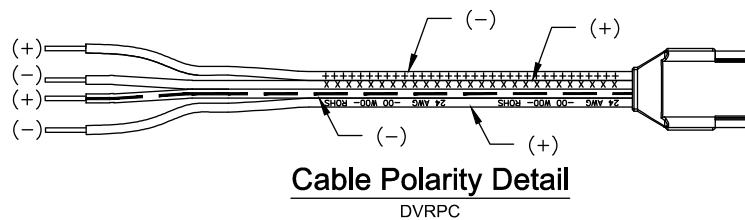
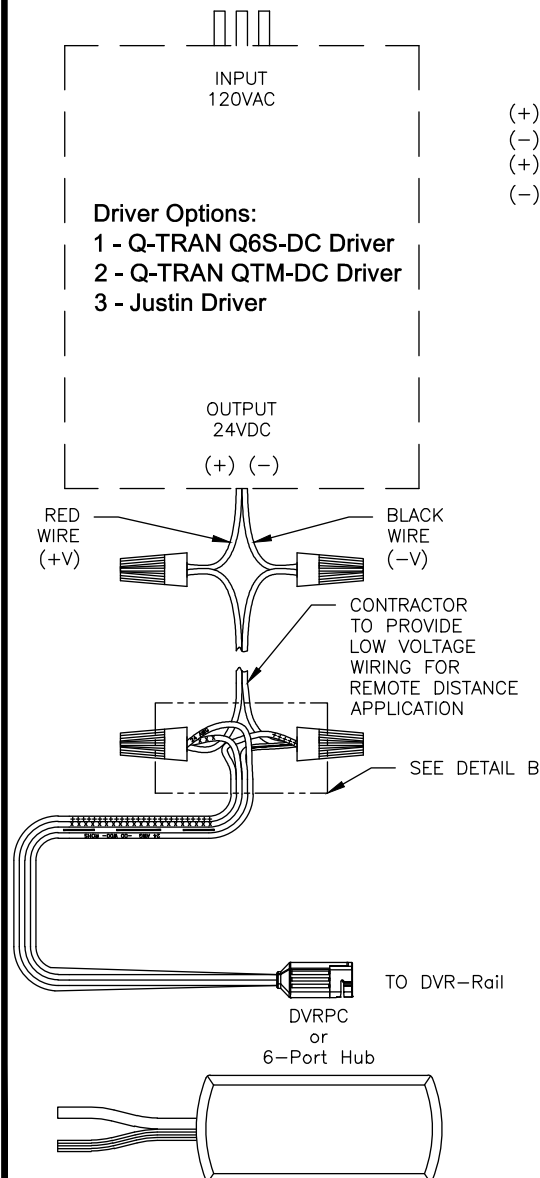


CAUTION:
 TOTAL CONNECTED FIXTURES WATTAGE NOT TO EXCEED DRIVER WATTAGE!

Step 4. Driver and Fixture Installation (Continued) : ON-OFF , Forward Phase

Note:
POWER CONNECTION

DVRPC and SIDEFEED power cables are 8Ft long.
Splice point connections to be located at 8Ft max from first fixture or sidefeed fixture. Drivers can be remote located.
Contractor to provide low voltage wiring for remote distance application. Contractor must test for 24VDC at all splice points.



DVRPC Power Feed cable is intended to plug into Feelux LED Driver with 6-way distributor however, it can be directly spliced and wired to a 24VDC Driver or Interface following the Diagrams in the Installation Instructions.

CAUTION:
TOTAL CONNECTED FIXTURES WATTAGE NOT TO EXCEED DRIVER WATTAGE!