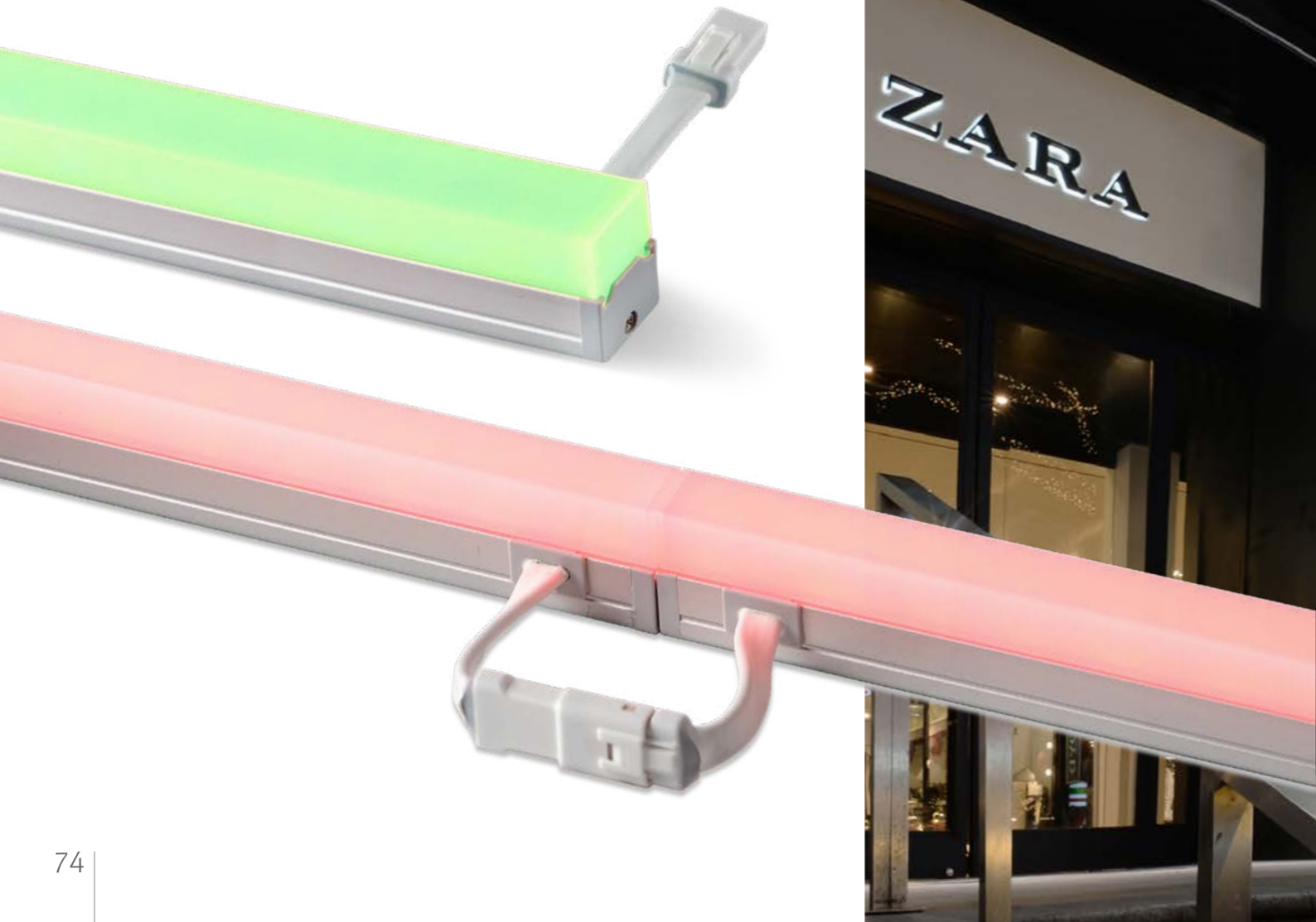


FLX Stix ODV*LED for Outdoor installation*

Light Creatures in the Night



- R.G.B / 3,000K / 4,000K 색온도의 라인 LED 조명
- 쉽고 빠르게 연결 가능한 제품
- DC24V 드라이버와 함께 사용
- 사용 가능한 부속품으로 디밍 연출 가능
- 옥외 조명으로 사용 가능한 LED 라인조명





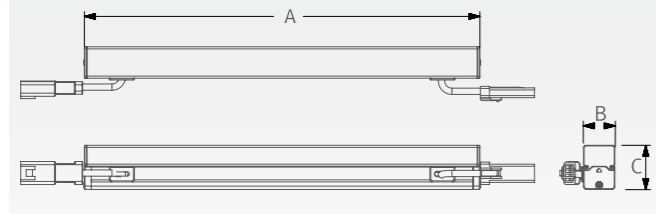
사양

| 제품명 | 입력전압 | 소비전력 | 색온도 | 사용온도 | IP등급 |
|---------------|-------|------|-----------------|--------|------|
| ODV3 40K-24V | DC24V | 3W | 3,000K / 4,000K | 0~45°C | IP66 |
| ODV6 40K-24V | DC24V | 6W | 3,000K / 4,000K | 0~45°C | IP66 |
| ODV12 40K-24V | DC24V | 12W | 3,000K / 4,000K | 0~45°C | IP66 |
| ODV18 40K-24V | DC24V | 18W | 3,000K / 4,000K | 0~45°C | IP66 |
| ODV4 RGB-24V | DC24V | 4W | R·G·B | 0~45°C | IP66 |
| ODV6 RGB-24V | DC24V | 6W | R·G·B | 0~45°C | IP66 |
| ODV12 RGB-24V | DC24V | 12W | R·G·B | 0~45°C | IP66 |
| ODV18 RGB-24V | DC24V | 18W | R·G·B | 0~45°C | IP66 |

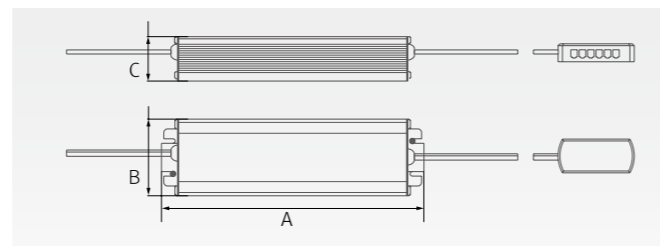
규격

| 제품명 | 입력전압 (V) | 소비전력 (W) | A (mm) | B (mm) | C (mm) |
|---------------|----------|----------|--------|--------|--------|
| ODV3 40K-24V | DC24 | 2.9 | 140.4 | 15 | 21.1 |
| ODV6 40K-24V | DC24 | 5.8 | 280.5 | 15 | 21.1 |
| ODV12 40K-24V | DC24 | 11.6 | 560 | 15 | 21.1 |
| ODV18 40K-24V | DC24 | 17.4 | 839 | 15 | 21.1 |
| ODV4 RGB-24V | DC24 | 4.2 | 189 | 15 | 21.1 |
| ODV6 RGB-24V | DC24 | 6.2 | 281 | 15 | 21.1 |
| ODV12 RGB-24V | DC24 | 12.5 | 560 | 15 | 21.1 |
| ODV18 RGB-24V | DC24 | 18.7 | 839 | 15 | 21.1 |

* 표준제품



| 제품명 | A (mm) | B (mm) | C (mm) |
|----------------|--------|--------|--------|
| FLC200-24V-FDH | 235 | 71 | 45 |
| FLC300-24V-F | 252 | 71 | 45 |



다양한 특징



약세사리

㉠ 제품 : FLX Stix ODV

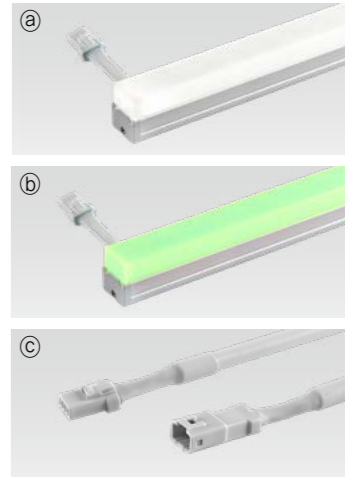
- ODV3 40K-24V (3W)
- ODV6 40K-24V (6W)
- ODV12 40K-24V (12W)
- ODV18 40K-24V (18W)

㉡ 제품 : FLX Stix ODV

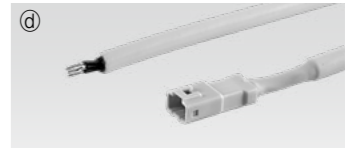
- ODV4 RGB-24V (4W)
- ODV6 RGB-24V (6W)
- ODV12 RGB-24V (12W)
- ODV18 RGB-24V (18W)

㉢ 연결선

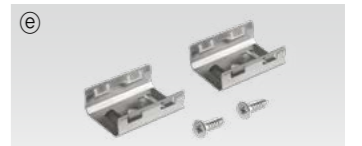
| ODVPTC | ODVPTC1 | ODVPTC2 | ODVPTC4 | ODVPTC6 |
|--------|---------|---------|---------|---------|
| 150mm | 300mm | 600mm | 1200mm | 1800mm |



㉣ 전원선 : ODVPC



㉤ 고정클립 : ODV-BRACKET



㉦ LED SMPS

| Part No | FLC200-24V-FDH | FLC300-24V-F |
|----------|-----------------|-----------------|
| Capacity | 200W 24V (IP66) | 300W 24V (IP66) |



㉧ Dimming Interface (1-10V)

FDC-L10 (Max.100W)



㉨ Dimming Interface (0-10/1-10, DMX512)

FDA-L2MO : Max. 200W (100W/CH, 2CH)
FDA-L5M : Max. 200W (100W/CH, 5CH)



㉩ End cap : ODV-CAP

