

FEELED Bar

Seamless Dimmable LED



FEELED Bar

FEELED BAR is the solution for eliminating dark spots in cove lighting. The Bar can be easily connected without additional connecting cables.



Dimming



Product Features

- AC power driver built in (SMPS not needed)
- Dark spot free at the linking point
- Round and flat milky diffuser
- Isolation circuit applied

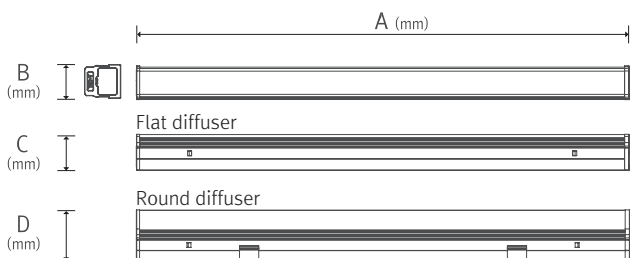
Notice

- Max. connection(Dimming) : 10pcs
- Max connection(Non-Dimming) : 400W
10W(40 pcs), 15W(26 pcs), 20W(20pcs)

Specification

- Frequency range : 50/60Hz
- Voltage : AC 100-240V
- Operating temperature : 0~45°C
- Lamp life : 40,000hr
- Energy efficiency : 70 lm/W
- Available color : 2700K, 3000K, 3500K, 4000K, 6000K
- Color rendering Ra > 80

Dimension



Model Name	Lamp Power (W)	A (mm)	B (mm)	C (mm)	D (mm)
LDB10A4B23RM/T	10	582.5	26	28	40.6
LDB15A4B23RM/T	15	882.5	26	28	40.6
LDB20A4B23RM/T	20	1182.5	26	28	40.6

Accessories

① Connecting cable for Non-dimming

TUNPTC/T	TUNPTC1/T	TUNPTC2/T	TUNPTC4/T	TUNPTC6/T
150mm(6inch)	300mm(1feet)	600mm(2feet)	1200mm(4feet)	1800mm(6feet)

② Connecting cable for dimming

DTUNPTC/T	DTUNPTC1/T	DTUNPTC2/T	DTUNPTC4/T	DTUNPTC6/T
150mm(6inch)	300mm(1feet)	600mm(2feet)	1200mm(4feet)	1800mm(6feet)

Power cord

General type : ③ TUNPC230/T | Vertical type : ④ TUNPC230/SM1/T

Open power cord :Between Led Bar & dimming controller

General type : ⑤ DTUNOPC230/T | Vertical type : ⑥ DTUNOPC230/SM1/T

⑦ Direct connector : TUNCPL

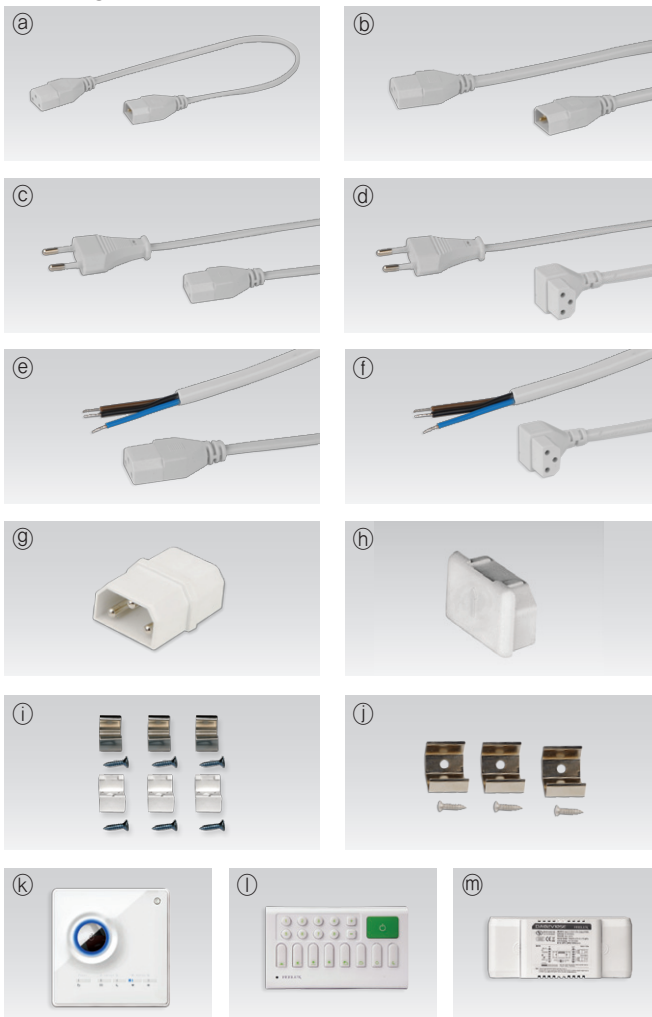
⑧ End Cap : TUN-CAP

Mounting bracket

Normal bracket : ⑨ LDB-BRACKET1 | Angle Bracket (15° & 40°) ⑩ LDB-BRACKET2

★ Dimming controller

⑪ Dimming switch, ⑫ Wireless control, ⑬ Interface



★ More detail information about dimming controller, please refer to the page 82 ~ page 87