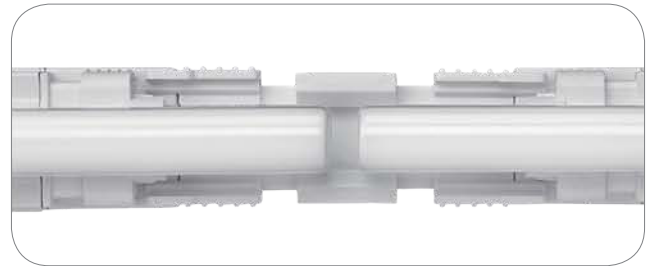


DimSlimLine

T5 Seamless Dimmable Illumination



DimSlimLine

SlimLine's innovative design is the solution for eliminating dark spots in cove lighting. And Feelux's dimming technology is also applied to the Seamless Illumination. High Output types as well as High efficiency are available.

Product Features

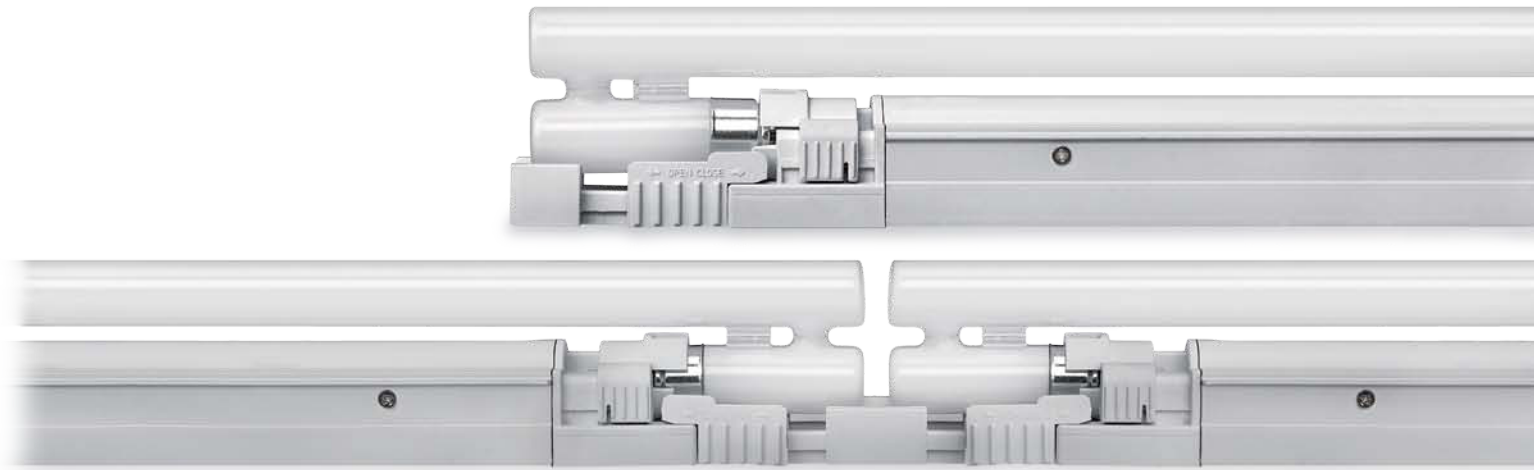
- Built in electronic ballast
- Allows easy connection, saves installation time
- Rigid aluminum extruded body and snap-in mounting brackets.
- Remote ballast optimized for SlimLine tube is available.

Benefits

- Dark spot free at the linked site with innovative lamp
- Unique design concept to accommodate the newly-developed lamps
- Extremely bright with T5 HO ballast
- Instant on starting, quiet and flicker free
- Protection from lamp End of Life(EOL), no load, over load, and cross wiring.
- Satisfy world class standard, CE certified and UL listed.

Specification

- Frequency range : 50/60Hz
- Voltage : 220~240V, 110~130V
- Power factor : >97%
- Color rendering : Ra>80
- A-thd : <15%
- EMI test : EN55015
- Class of protection II
- Degree of protection IP20
- Output protocol : PWM
- Dimming range : 5~100%



Notice

- Max. connection : 10pcs/CH
- Please refer to Dimming Controller section

Accessories

① Connecting cables

DSLLPTC	DSLLPTC 1	DSLLPTC 2	DSLLPTC 4	DSLLPTC 6
150mm(6inch)	300mm(1feet)	600mm(2feet)	1200mm(4feet)	1800mm(6feet)

② Direct connector : SLLCPL

③ Power cord

(Between DimSlimLine(in) & Dimming Controller(out) w/o plug)
DSLLOPC230

④ Fluorescent lamps

2200K, 2700K, 3000K, 3500K, 4000K, 6500K, 8000K, Red,
Green and Blue are available.

⑤ Diffuser

SLL14CV	SLL21CV	SLL28CV
14, 24W	21, 39W	28, 54W

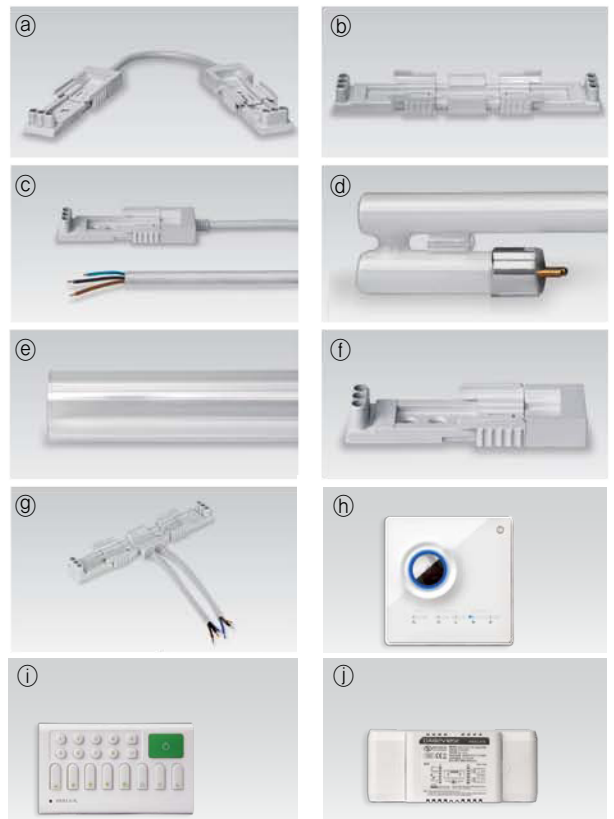
⑥ End Cap : SLL-CAP

⑦ Booster Connector : SLLCPL/H

★ Dimming controller

⑧ Dimming switch, ⑨ Wireless control, ⑩ Interface

Model Name	Lamp Power (mm)	A (mm)	B (mm)	C (mm)	D (mm)	E (mm)
DSLL14AB23NN	14	582	496.5	44.3	26.6	34
DSLL21AB23NN	21	882	796.5	44.3	26.6	34
DSLL28AB23NN	28	1182	1096.5	44.3	26.6	34
DSLL35AB23NN	35	1402	1316.5	44.3	26.6	34
DSLL24AB23NN	24	582	496.5	44.3	26.6	34
DSLL39AB23NN	39	882	796.5	44.3	26.6	34
DSLL54AB23NN	54	1182	1096.5	44.3	26.6	34



★ More detail information about dimming controller, please refer to the page 78 ~ page 83

