

DimSlim

T5 Dimmable Illumination



DimSlim

DimSlim is the lowest profile dimmable fluorescent fixture in the world. It is engineered specifically to offer designers and architects the option of providing a fully dimmable fluorescent lighting system (with built-in electronic ballast) in the smallest of spaces.

It is designed to be compatible with 0-10V/1-10V, DALI, DSI, DMX and Phase dimming control by using the Interface.

Notice

- Max. connection : 10pcs/CH
- Please refer to Dimming Controller section.

Product Features

- The world smallest dimmable fluorescent fixture
- Built-in electronic ballast with aluminum body
- Quick and easy fit 3-pin "Bus" connection
- Dimming down to 5% of max. output
- Compatible with DALI, DSI and DMX: using signal translator

Benefits

- Minimum space requirement
- Maximum design capability
- Compliance with aesthetic requirements
- Reduces installation time
- Suitable for either large or small project
- Satisfy world class standard, CE & TUV certified

Application

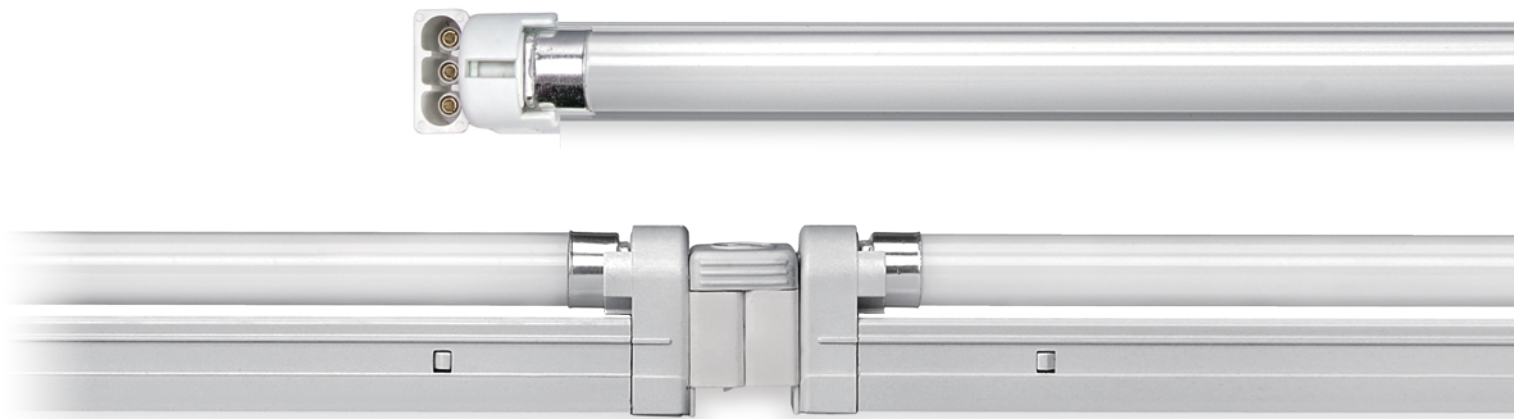
- Space for Modern design by using T5 size (16mm)
- Office, Living room, Kitchen, Hospital, Class room
- SIH (Sun In Home) system available

Specification

- Frequency range : 50/60Hz
- Voltage : 220~240V, 110~130V
- Power factor : >97%(max. intensity), >70%(min. intensity)
- Operation temperature: 10-45°C
- Tube diameter: 16mm(T5)
- Class of protection II
- Degree of protection IP20
- Output protocol : PWM
- Dimming range : 5~100%

Application

You can make SIH system by using both warm color and cool color.
 Warm color : Red, 2200K, 2700K, 3000K, 3500K
 Cool color : Green, Blue, 4000K, 6500K, 8000K
 (Please refer to SIH section)



Accessories

Ⓐ Connecting cables

DSLPTC/T	DSLPTC1/T	DSLPTC2/T	DSLPTC4/T	DSLPTC6/T
150mm(6inch)	300mm(1feet)	600mm(2feet)	1200mm(4feet)	1800mm(6feet)

Ⓑ Direct connector : DSLCAP/T

Ⓒ Power cord

(Between DimSlim(in) & Dimming Controller(out) w/o plug)
DSLOPC230/T

Ⓓ Diffuser

DSL14CV	DSL21CV	DSL28CV	DSL35CV
14, 24W	21, 39W	28, 54W	35W

Ⓔ Mounting Bracket

Ⓛ Fluorescent lamps

2200K, 2700K, 3000K, 3500K, 4000K, 6500K, 8000K, Red,
Green and Blue are available.

Ⓜ Connector for Dark Spot free : DSLPTC/T (O/LAP 80mm)

Ⓢ End Cap

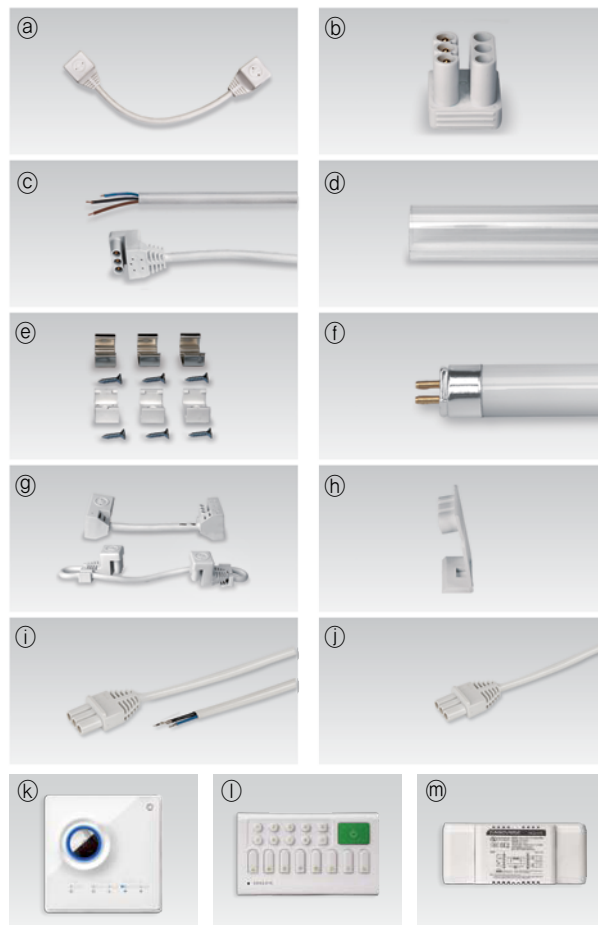
Vertical Power Cord

Ⓛ DSLOPC230/SM2/T Ⓛ DSLPTC/SM2/T

★ Dimming controller

Ⓚ Dimming switch, Ⓛ Wireless control, Ⓜ Interface

Model Name	LampPower (W)	L (mm)	W (mm)	H (mm)	H (mm) with diffuser
DSL14AB23NN/T	14	595	24.2	35.6	37.1
DSL21AB23NN/T	21	895	24.2	35.6	37.1
DSL28AB23NN/T	28	1195	24.2	35.6	37.1
DSL35AB23NN/T	35	1495	24.2	35.6	37.1
DSL24AB23NN/T	24	595	24.2	35.6	37.1
DSL39AB23NN/T	39	895	24.2	35.6	37.1
DSL54AB23NN/T	54	1195	24.2	35.6	37.1



★ More detail information about dimming controller, please refer to the page 78 ~ page 83

