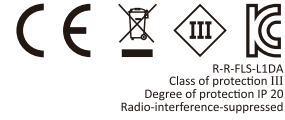


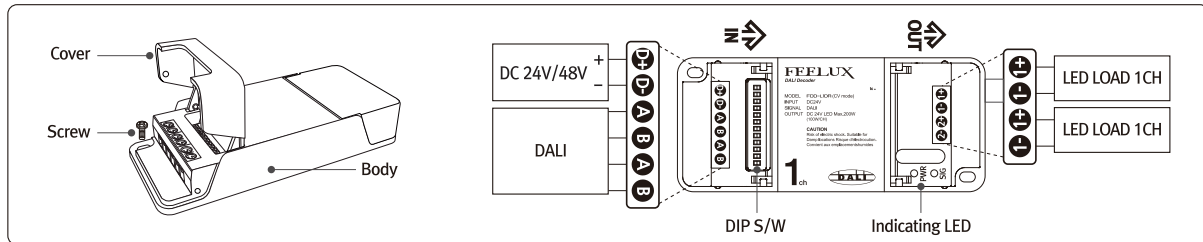
### Product Specification

TYPE FDD-L1DA  
INPUT DC 24V-48V  
OUTPUT MAX.200W[100W/CH]

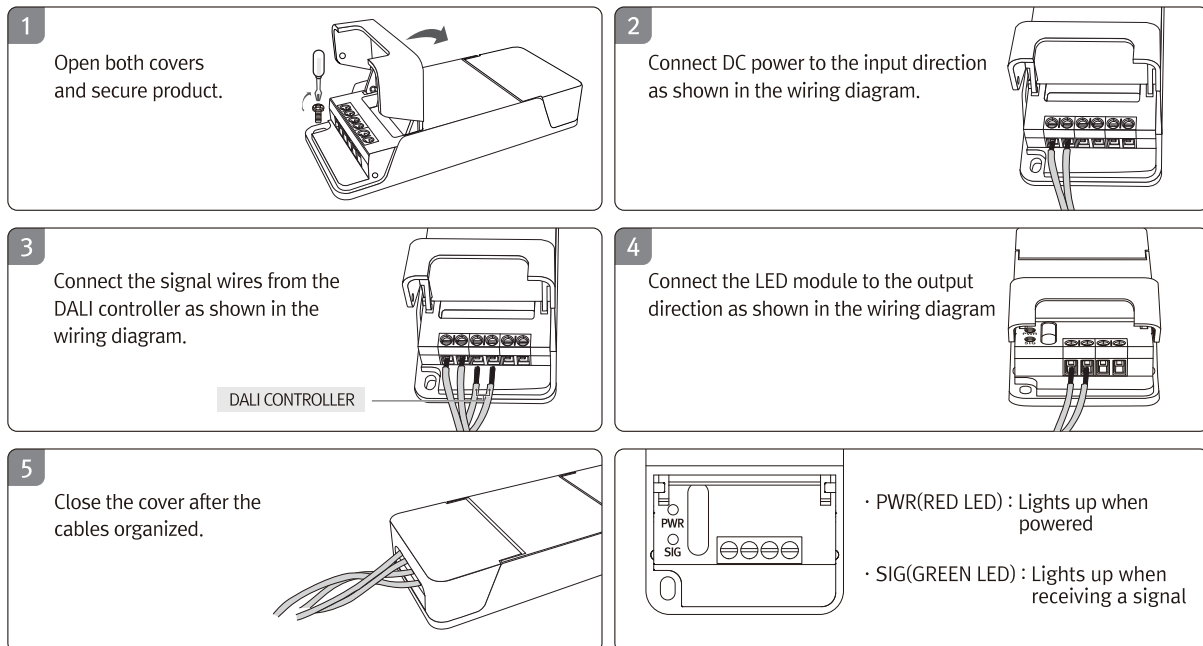
INPUT SIGNAL DALI  
OUTPUT SIGNAL PWM 1CH  
DC 24V LED Max.100W/CH



### Designation and Connection method



### Installation



### Safety Precaution

#### WARNING

Risk of Electrical Shock – More Than One Source of Supply – Disconnect All Power Sources Before Servicing

#### CAUTION

1. Do not connect more than 100W load per channel.
2. Do not touch with wet hand. There is a chance of electric shock.
3. Do not install this product close to flammables or heaters.
4. Do not pull fixed wires at the terminal
5. Do not install at wet place. There is a chance of electric shock.
6. Pull out the power cord in case of smoke or strange smell
7. Do not disassemble or remodel this product

### Product warranty

One-year warranty, with one-to-one free replacement after inspection. (excluding brackage due to transportation & mis-handling)