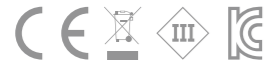


FLXible LED Tape Tako

Flexible wall grazer effect

Flexible Luminaires with optic lens



- Flexible luminaire with optics
- Fully sealed with PU material for wet location
- IP67 rated for outdoor and indoor application
- Various beam angles (30°, 45°, 60°, 20x45°)
- 90+ CRI Standard
- Dimmable
- Available in Standard Lengths of 1,2,3,4,5M reels
- Field Cuttable (125mm) for customized length
- 18W per meter

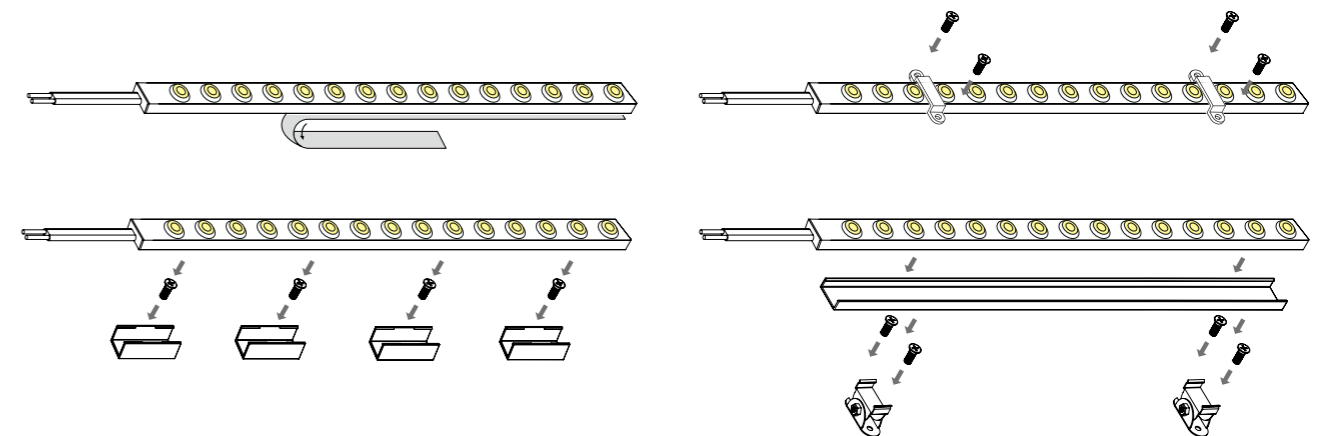




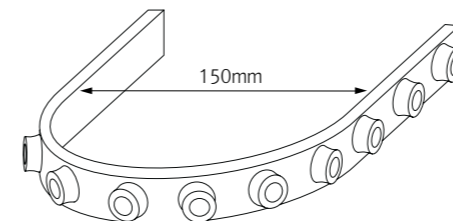
Specification

Model Name	Power Input	Lamp power	Luminous Flux	Efficiency	Color Rendering	Available Color	Operating temperature	IP	Beam Angle	Material
FTT18 27K-24V-C90	DC 24V	18W/m	1,554 lm/m	86 lm/W	Ra > 90	2,700 K	-25° C to 45° C	IP67	30°, 45°, 60°, 20x45°	PU
FTT18 30K-24V-C90			1,764 lm/m	90 lm/W		3,000 K				
FTT18 35K-24V-C90			1,525 lm/m	102 lm/W		3,500 K				
FTT18 40K-24V-C90			1,876 lm/m	104 lm/W		4,000 K				

Installation

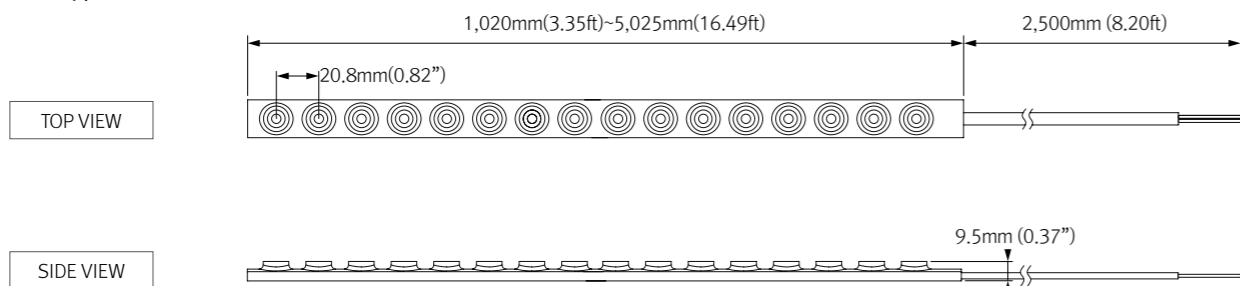


Bending Diameter

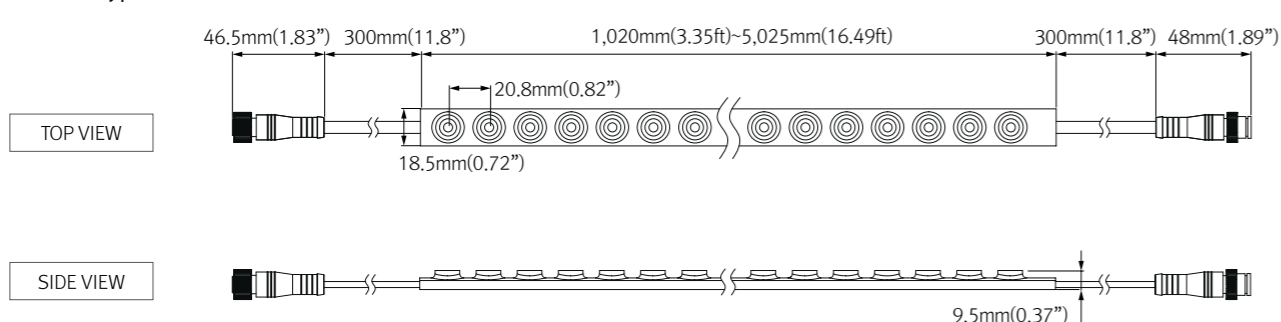


Dimension

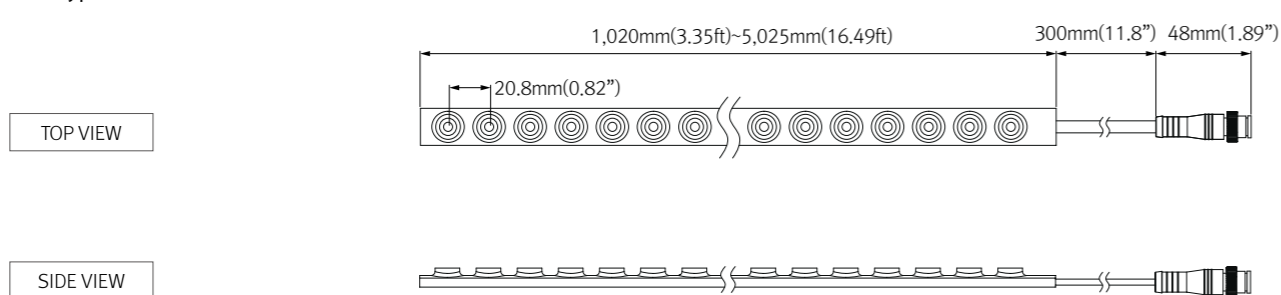
OPC Type



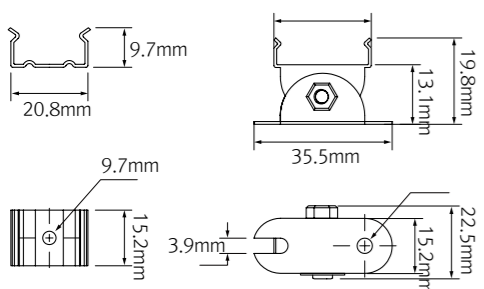
Add-on Type



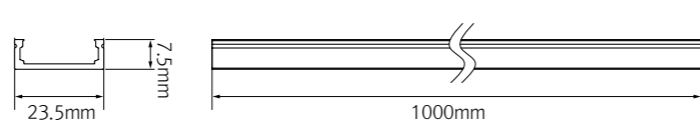
End Type



*** Angle Bracket**



*** FTT Extrusion Line**



Accessories

a Flexible LED Tape Tako (OPC Type)

- FTT18-40K-24V-C90 (1M) FTT18-40K-24V-C90 (4M)
- FTT18-40K-24V-C90 (2M) FTT18-40K-24V-C90 (5M)
- FTT18-40K-24V-C90 (3M)

b Flexible LED Tape Tako (Add-on Type)

- FTT18A-40K-24V-C90 (1M) FTT18A-40K-24V-C90 (4M)
- FTT18A-40K-24V-C90 (2M) FTT18A-40K-24V-C90 (5M)
- FTT18A-40K-24V-C90 (3M)

c Flexible LED Tape Tako (End Type)

- FTT18B-40K-24V-C90 (1M) FTT18B-40K-24V-C90 (4M)
- FTT18B-40K-24V-C90 (2M) FTT18B-40K-24V-C90 (5M)
- FTT18B-40K-24V-C90 (3M)

d Power Cable

- FTTPC (2,500mm)

e Male and Female Connector

- FTTPC (150mm), FTTPC1 (300mm), FTTPC2 (600mm), FTTPC4 (1,200mm), FTTPC6 (1,800mm)

f T-Type Connector

- FTTPC-T (200mm) / 2 way Female Connector

g FTT Bracket

- FTT-BRACKET1 (2pcs)

h FTT Angle Bracket

- FTT-BRACKET2 (2pcs)

i FTT Strap

- FTT-STRAP (10pcs + 20 screws)

j FTT Extrusion Line

- FTT-EXL(1M)

k LED Driver with 12way distributor, with power cord (1,800mm)

Part No	FLC30-24V/T	FLC75-24V-P/T
Capacity	30W 24V	75W 24V

l LED Driver : FLC200-24V/T (200W DC24V)

- LED Driver With 12way distributor

m Dimming Interface (0-10V)

- FDC-L10 : Max. 100W (100W/CH, 1CH)

n Dimming Interface (0-10/1-10, DMX512)

- FDA-L2M0 : Max. 200W (100W/CH, 2CH)

o Dimming Interface (Dali)

- FDD-L1DA : Max. 200W (100W/CH, 1CH)

p Dimming Interface (Zigbee)

- FDD-L2Z : Max. 200W (100W/CH, 2CH)

q Switch (Zigbee)

- FSM-Z1 : Wireless Control

r END CAP

- FTT-END CAP

