

FLX Stix DDPPro

LED for Display, Cabinet, Furniture & Cove

Dynamic LED



- Super slim linear LED with spot free high output
- Quick connection system
- Perfected with color consistency
- No dark spot at the linkage point for continuous seamless effect
- Various mounting methods including magnetic
- Dimmable with available accessories





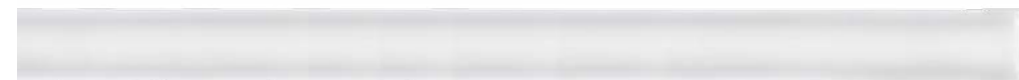
FLX Stix DDPPro
High Output Dynamic LED



FLX Stix DDPPro 3W Length (145 mm)



FLX Stix DDPPro 6W Length (285.1 mm)



FLX Stix DDPPro 12W Length (564.6 mm)

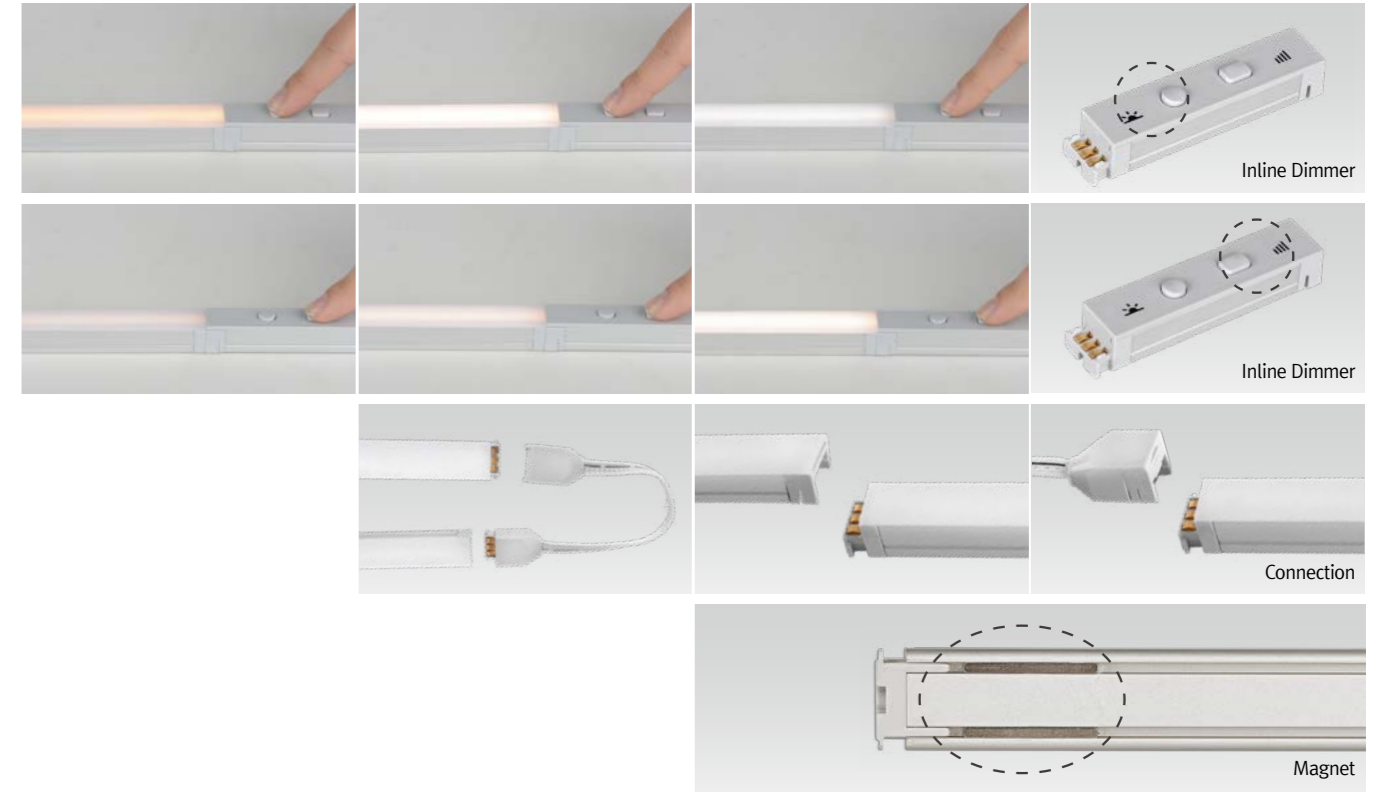


FLX Stix DDPPro 18W Length (843.6 mm)

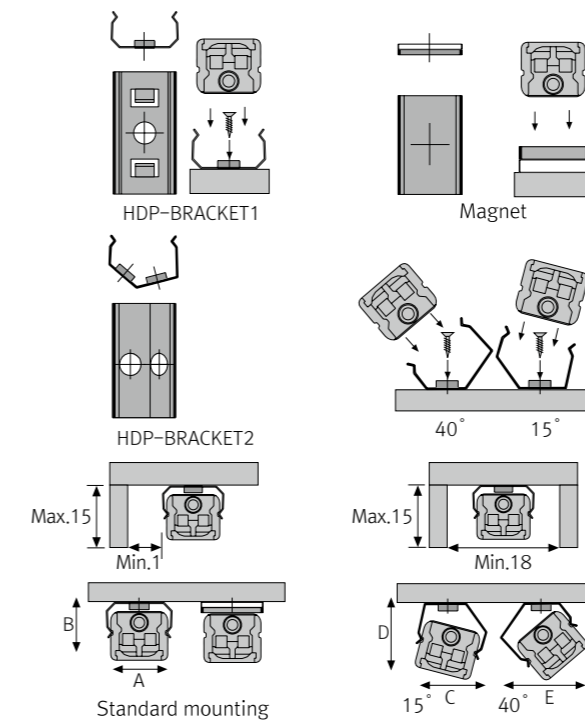


FLX Stix DDPPro 24W Length (1,122.7 mm)

Various options



Installation



Max. connection

- 75W in one row(single power feed)
- LED Driver

LED Driver Model Name	Max. units for LED Driver			
	24V/15W	24V/30W	24V/75W	24V/200W
DDP3 SC-24V-C90	5	10	25	71
DDP6 SC-24V-C90	2	5	12	34
DDP12 SC-24V-C90	1	2	6	17
DDP18 SC-24V-C90	-	1	4	11
DDP24 SC-24V-C90	-	1	4	8

- W/ Bracket

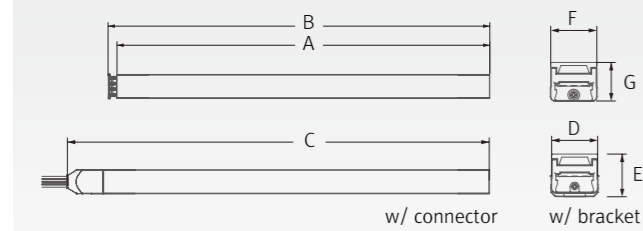
	A(mm)	B(mm)	C(mm)	D(mm)	E(mm)	F(mm)
Flat type	16	14	18.3	18	21	19.6

Specification

Model Name	Power Input	Lamp Power	Luminous Flux	Efficiency	Color Rendering	Available Color	Operating Temperature
DDP3 SC-24V-C90	DC24V	3W	240 lm	80 lm/W	Ra > 90	2,200K-4,000K	0-45°C
DDP6 SC-24V-C90	DC24V	6W	480 lm	80 lm/W	Ra > 90	2,200K-4,000K	0-45°C
DDP12 SC-24V-C90	DC24V	12W	960 lm	80 lm/W	Ra > 90	2,200K-4,000K	0-45°C
DDP18 SC-24V-C90	DC24V	18W	1,440 lm	80 lm/W	Ra > 90	2,200K-4,000K	0-45°C
DDP24 SC-24V-C90	DC24V	24W	1,920 lm	80 lm/W	Ra > 90	2,200K-4,000K	0-45°C

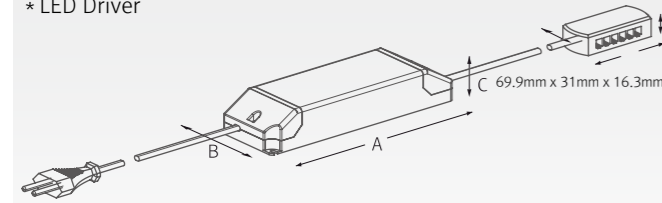
Dimension

Model Name	Power Input (V)	Lamp Power (W)	A (mm)	B (mm)	C (mm)	D (mm)	E (mm)	F (mm)	G (mm)
DDP3SC-24V-C90	DC 24	3	139.9	145	162.8	16	15.3	15	14.1
DDP6SC-24V-C90	DC24	6	280	285.1	302.9	16	15.3	15	14.1
DDP12SC-24V-C90	DC 24	12	559.5	564.6	582.4	16	15.3	15	14.1
DDP18SC-24V-C90	DC 24	18	838.5	843.6	861.4	16	15.3	15	14.1
DDP24SC-24V-C90	DC 24	24	1,111.6	1,122.7	1,140.5	16	15.3	15	14.1

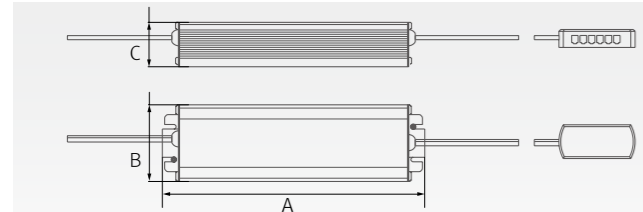


Model Name	A (mm)	B (mm)	C (mm)
FLC15-24V/T	121	45	16
FLC30-24V/T	150	41	31
FLC75-24V-P/T	180	60	32

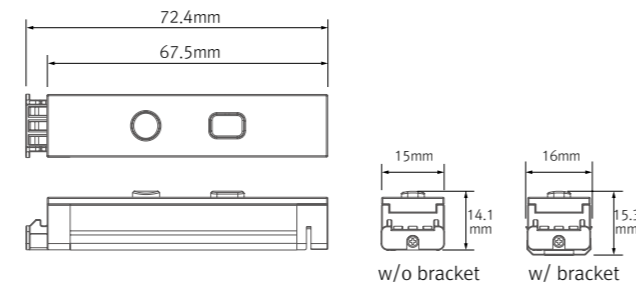
*** LED Driver**



Model Name	A (mm)	B (mm)	C (mm)
FLC200-24V/T	228	68	39



*** Inline dimmer**



Accessories

Ⓐ Connecting cables(between FLX Stix HDPro & FLX Stix HDPro)

HDPPTC	HDPPTC1	HDPPTC2	HDPPTC4	HDPPTC6
150mm(6inch)	300mm(1feet)	600mm(2feet)	1,200mm(4feet)	1,800mm(6feet)

* Available Color : Black, Gray



Ⓑ Power cable : HDPPC (2,500mm)

Power cable (Between FLX Stix HDP/DDP & 12-way distributor)

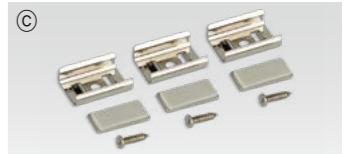
* Available Color : Black, Gray



Ⓒ Mounting bracket : HDP-BRACKET 1

HDP-BRACKET1(A) : 1set = 2pcs

HDP-BRACKET1(B) : 1set = 3pcs



Ⓓ Angle bracket (15° & 40°) : HDP-BRACKET 2

HDP-BRACKET2(A) : 1set = 2pcs

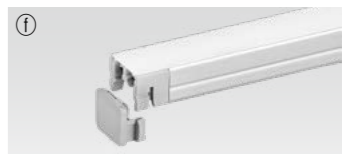
HDP-BRACKET2(B) : 1set = 3pcs



Ⓔ Sidefeed for seamless extension (3W) : DDP3 SC-24V-C90-S



Ⓕ End cap : HDP-CAP



Ⓖ LED Driver with 12way distributor, with power cord (1,800mm)

Part No	FLC15-24V/T	FLC30-24V/T	FLC75-24V-P/T
Capacity	15W 24V	30W 24V	75W 24V



Ⓗ LED Driver : FLC200-24V/T (200W, DC24V)

LED Driver With 12way distributor



Ⓘ Dimming Interface(0-10/1-10, DMX512)

FDA-L2M0 : Max. 200W (100W/CH, 2CH)

FDA-L5M : Max. 200W (50W/CH, 5CH)



Ⓛ Dimming Interface (Dali): FDD-L1 DA

Max. 200W (100W/feed, 2feeds)



Ⓚ Inline dimmer : DDPDIM

Max 75W in a row

