

FLX Spot DVP

LED for Display, Cabinet, Furniture

Slide and Swivel Mini LED Spotlight



- Suitable for furniture and showcase application
- Available in white or black
- To be used with constant voltage DC 24V driver
- Mins spotlight with various beam angle
- Dimmable with available accessories

Various color

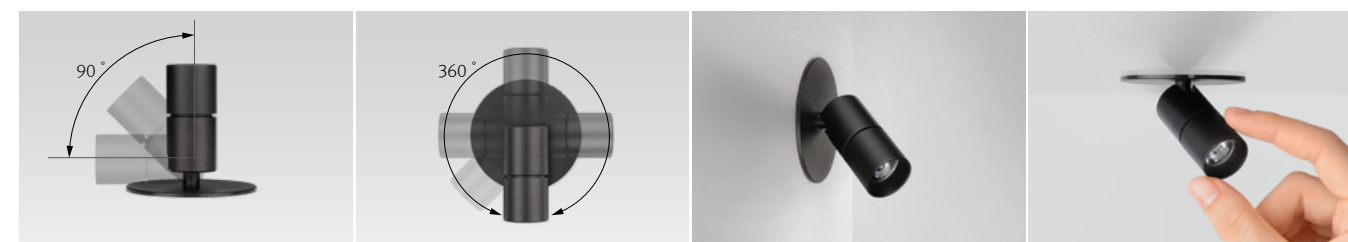


Round surface type



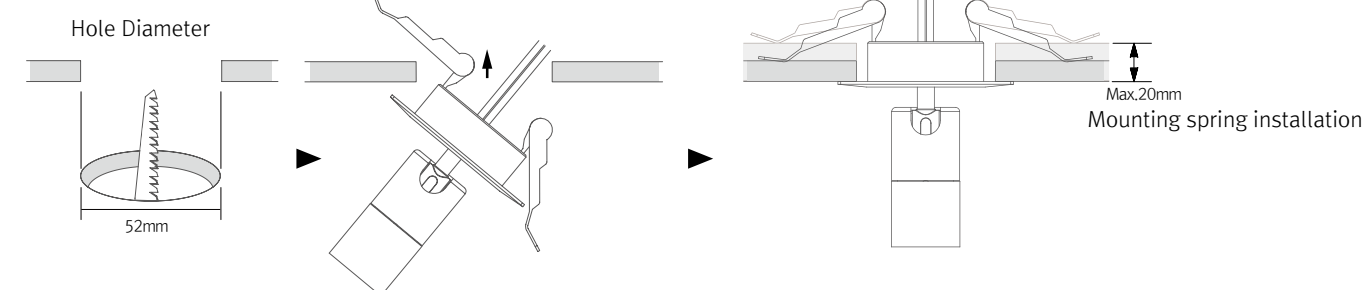


Various options

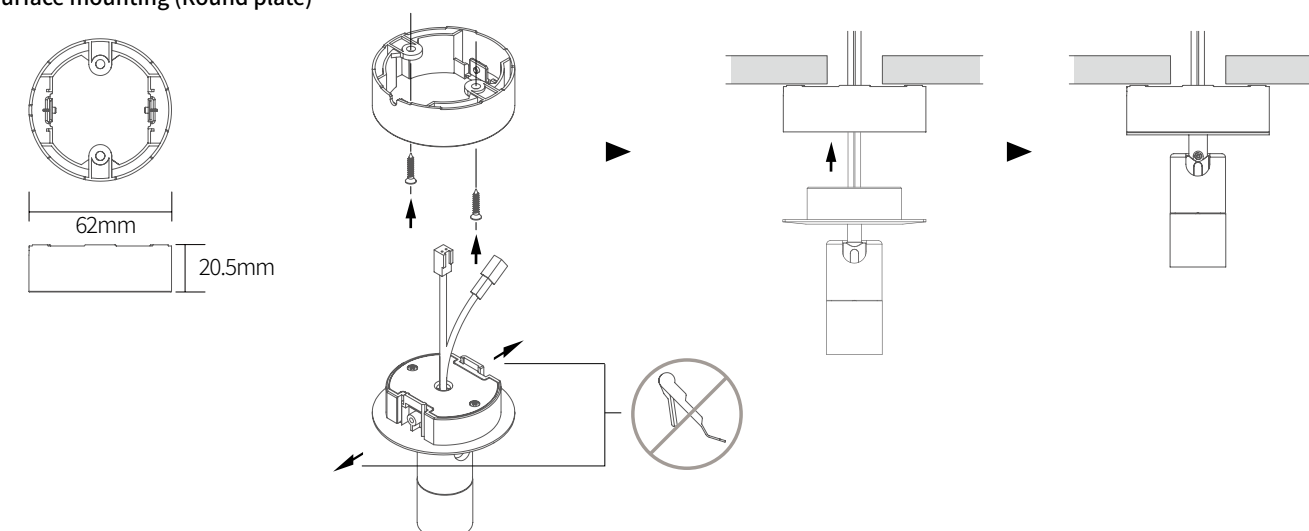


Installation

Recessed mounting



Surface mounting (Round plate)



Max. connection of linked fixtures

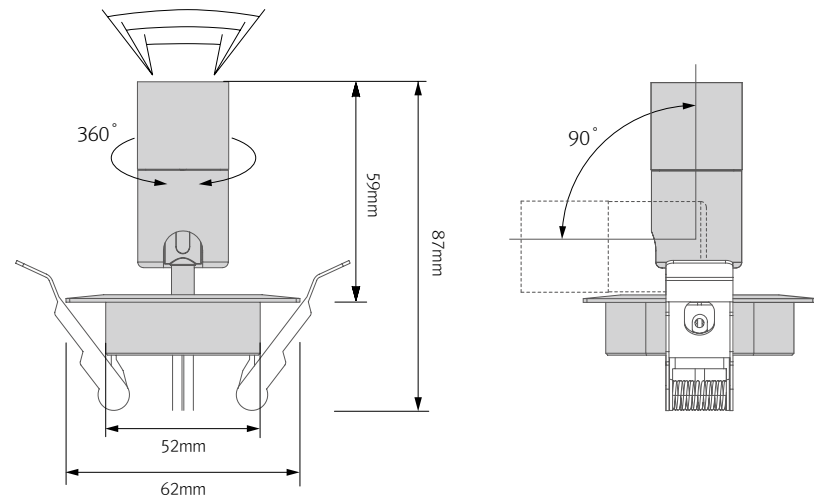
- FLX Spot DVP : Max 7pcs in a row
- LED Driver

Model Name	Max. units for LED driver		
	24V/30W	24V/75W	24V/200W
DVP3 40K-24V-C90	7	17	66

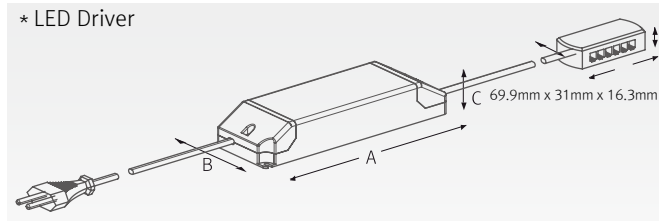
Specification

Model Name	Color	Power Input	Lamp Power	Lumens	Efficiency	Color Rendering	Available Color	Beam Angle	Operating Temperature
DVP340K-24V-C90-BK-28	White, Black	DC 24V	3.9 W	305 lm	78 lm/w	Ra > 90	2,700K/3,000K/3,500K/4,000K	28° 40° 50°	0 ~ 45°C

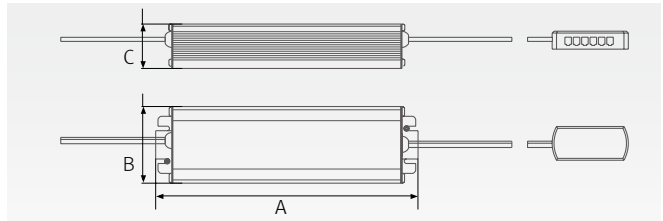
Dimension



Model Name	A (mm)	B (mm)	C (mm)
FLC30-24V/T	150	41	31
FLC75-24V-P/T	180	60	32



Model Name	A (mm)	B (mm)	C (mm)
FLC200-24V/T	228	68	39



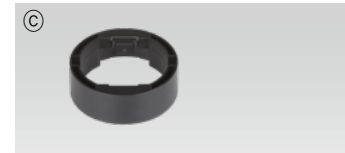
Accessories



@ FLX Spot DVP	
Black	White
DVP3 40K-24V-BK	DVP3 40K-24V-WT



DVP-HOOD Hood with lens for replacement
__DVP3-HOOD-BK-28

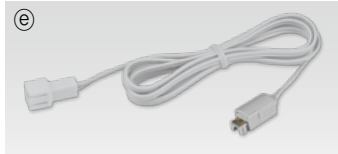


DVP surface mounting ring
__DVP-MR-BK

④ Extension cable : DVSPTC (2,500mm)
Between FLX Spot DVS & FLX Spot DVS or 12 way distributor



⑤ Connecting cable : NDVDVSPTC (1,000mm)
Between FLX Spot DVS & FLX Stix NDV
* Available Color : Black, Gray



① Connecting cable : NDVPC (2,500mm)
Between FLX Stix NDV & FLX Spot DVS
* Available Color : Black, Gray



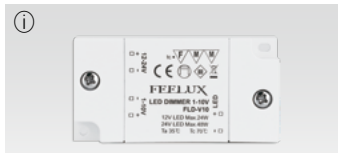
⑨ LED Driver with 12way distributor, with power cord (1,800mm)		
Part No	FLC30-24V/T	FLC75-24V-P/T
Capacity	30W 24V	75W 24V



⑥ LED Driver : FLC200-24V/T (200W DC24V)
LED Driver With 12way distributor



① Dimming Interface (1-10V) : FDC-L10
Max. 100W (100W/CH, 1CH)



① Dimming Interface (0-10/1-10,DMX512)
FDA-L2M0 : Max. 200W (100W/CH, 2CH)
FDA-L5M : Max. 200W (50W/CH, 5CH)



⑫ Dimming Interface (Dail) : FDD-L1DA
Max. 200W (100W/CH, 1CH)



① Door and motion detection sensor (DC) : FLS-M24V
Voltage : DC 24V



⑓ Human-body detection sensor (DC) : FLS-P24V
Voltage : DC 24V

