

Contents

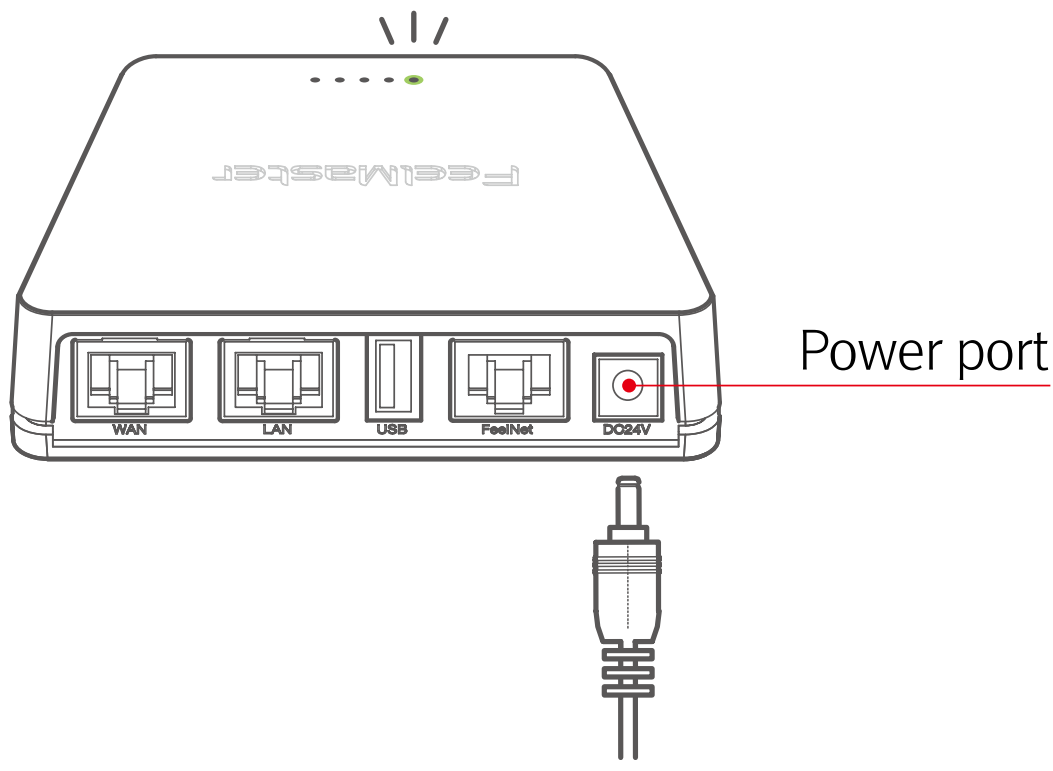


- 1. Operating The FeelMaster
- 2. Wi-Fi Setting
- 3. Operating Application
- 4. Internal Access Mode
- 5. External Access Mode
 - 5-1> Register account
 - 5-2> External Access Mode
 - 5-3> Delete account
- 6. Setting User Modes
 - 6-1> User Mode
 - 6-2> Administration Mode
- 7. Device Management
 - 7-1> Device registration
 - 7-2> Delete the device
- 8. Control the device
 - 8-1> Entire control
 - 8-2> Individual control
 - 8-3> Change the name of device channel
- 9. Set up a scene
 - 9-1> Save a Scene
 - 9-2> Set up a play scene
 - 9-3> Delete Scene
- 10. Set up a wireless remote controller
 - 10-1> Controller registration
 - 10-2> Setting the switch buttons
- 11. Set up an Alarm function
 - 11-1> Add Alarm
 - 11-2> Alarm Setting
 - 11-3> Delete Alram
- 12. Configuration setting
 - 12-1> Wi-Fi Setting
 - 12-2> Password management
 - 12-3> DMX512 Setting
 - 12-4> Reset the device

1. Operating The FeelMaster

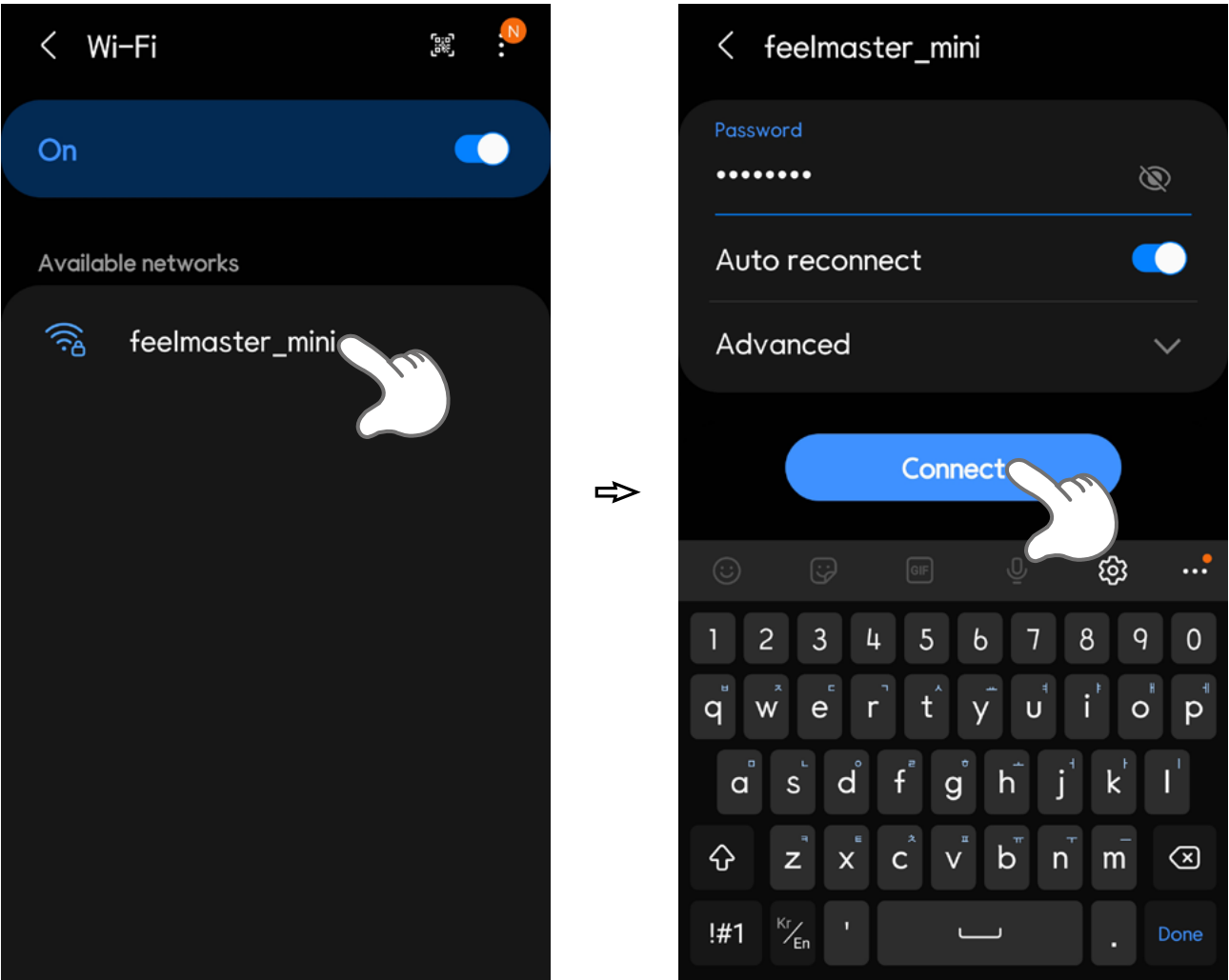
Plug the adapter cable into the power port as shown below.

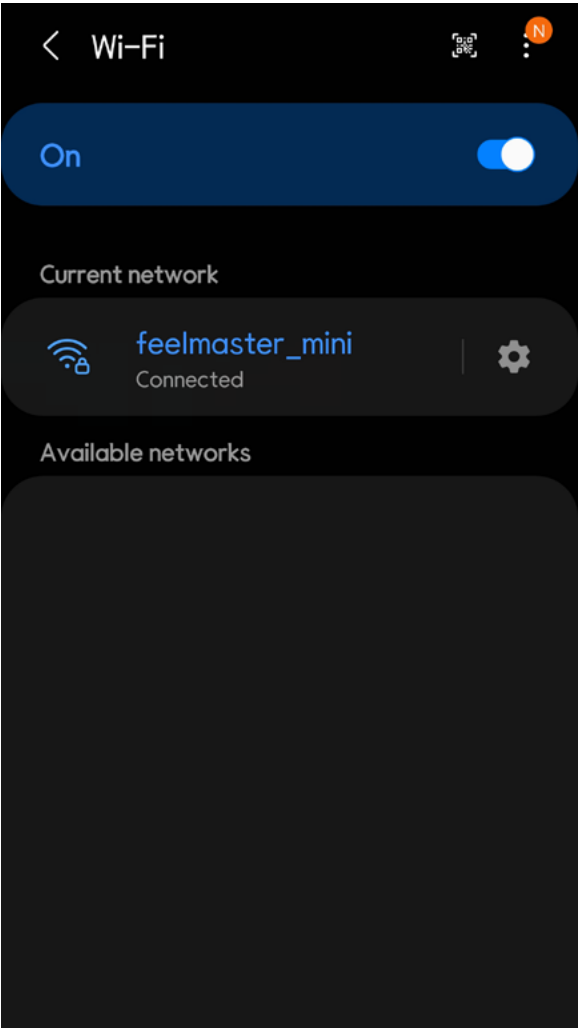
Green LED indicator starts flashing and FeelMaster runs in 1 min.



2. Wi-Fi Setting

Connect '**feelmaster_mini**' in Wi-Fi setting of your mobile as shown below. (You can login with temporary password '12345678' And change the password after first login.)



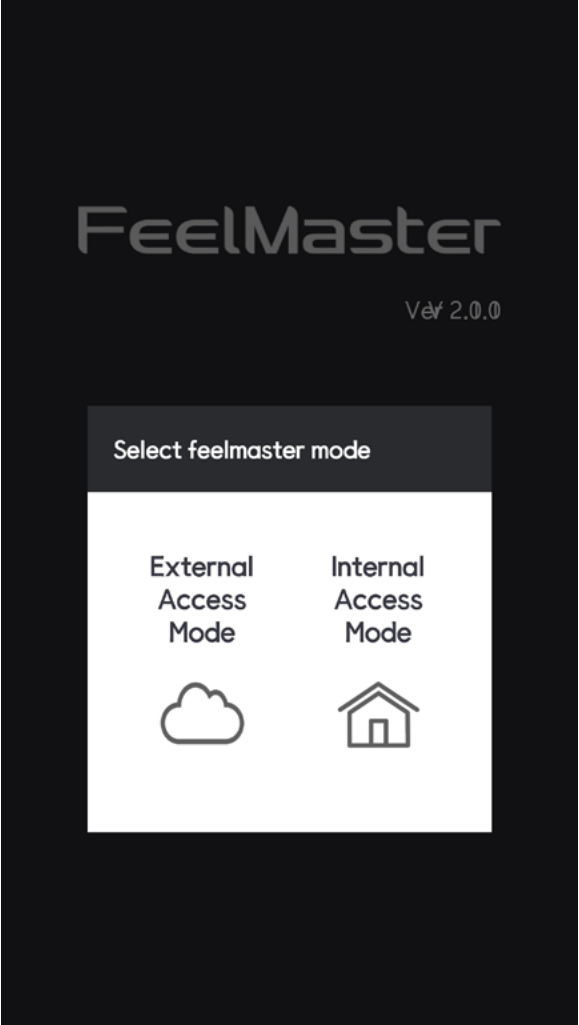


3. Operating Application

Launch FeelMaster App, Select your access mode.
There are two modes, '**Internal Access mode**' and '**External Access mode**'.

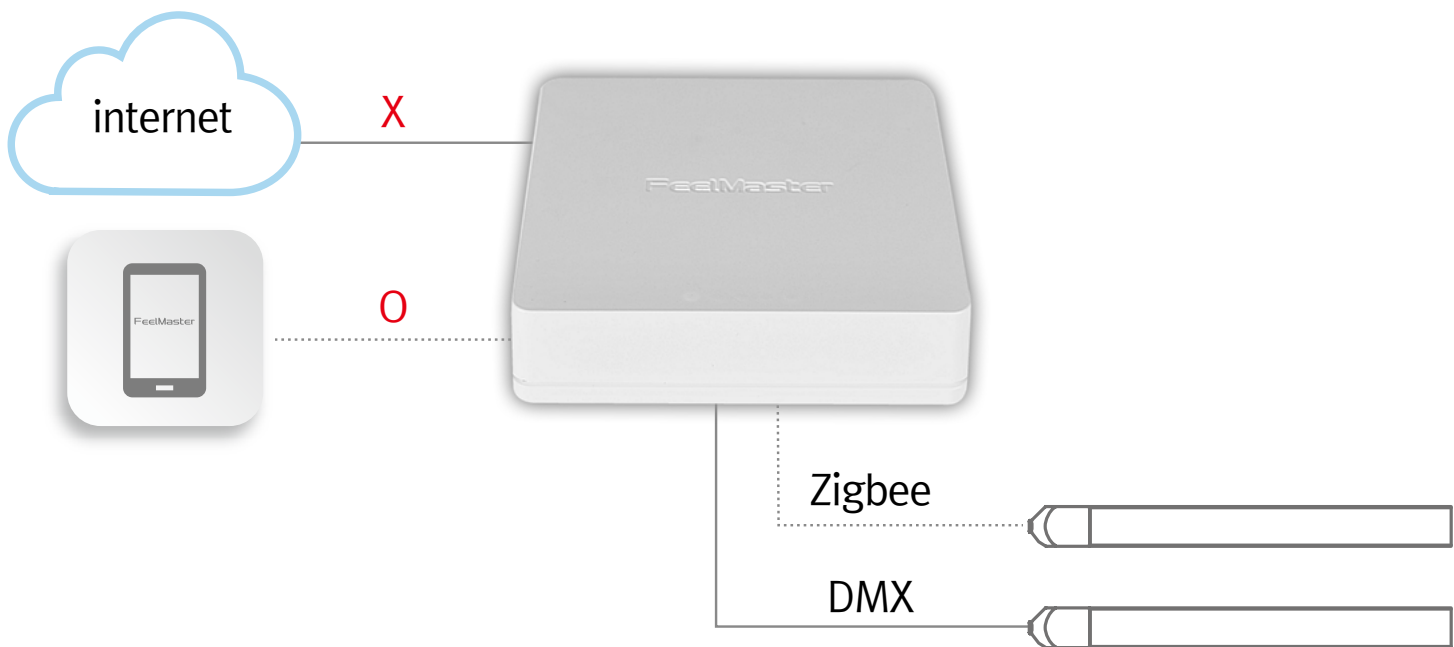


Feelux Feelmaster



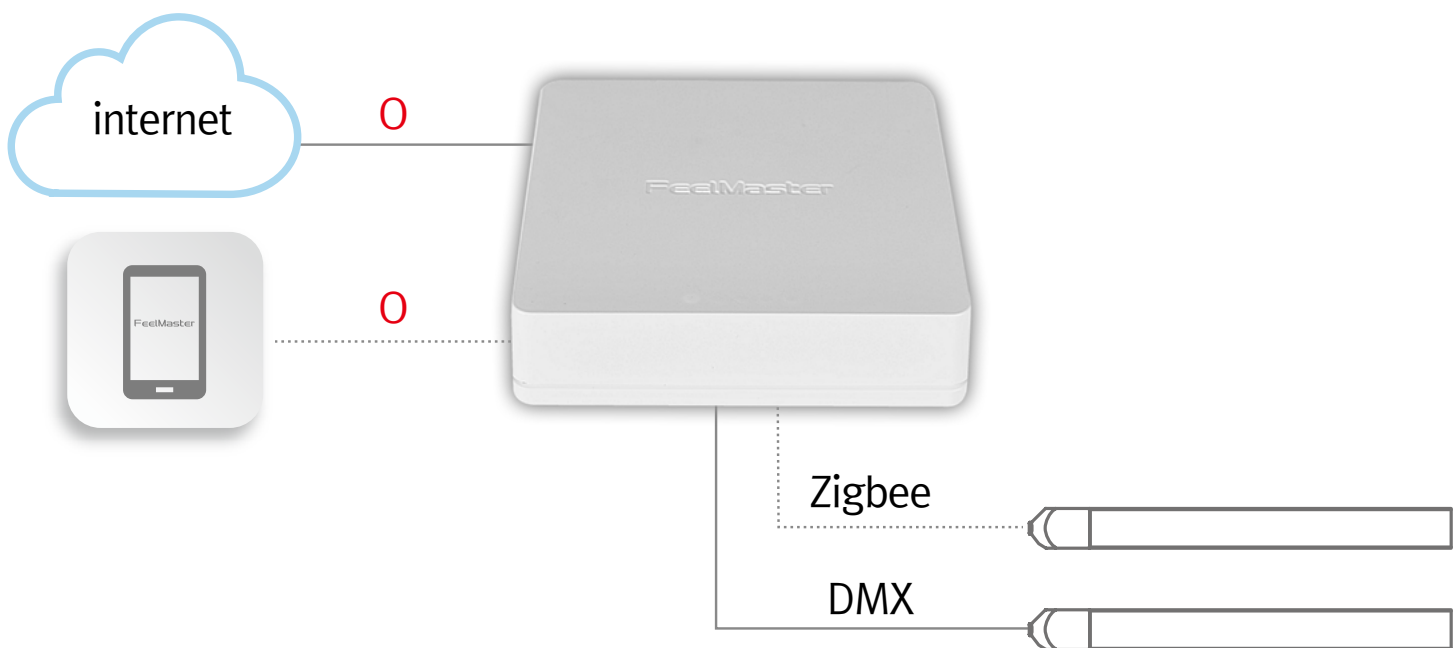
► **Internal Access mode**

Internal Access mode allows to connect and control the device within a Wi-Fi zone only.



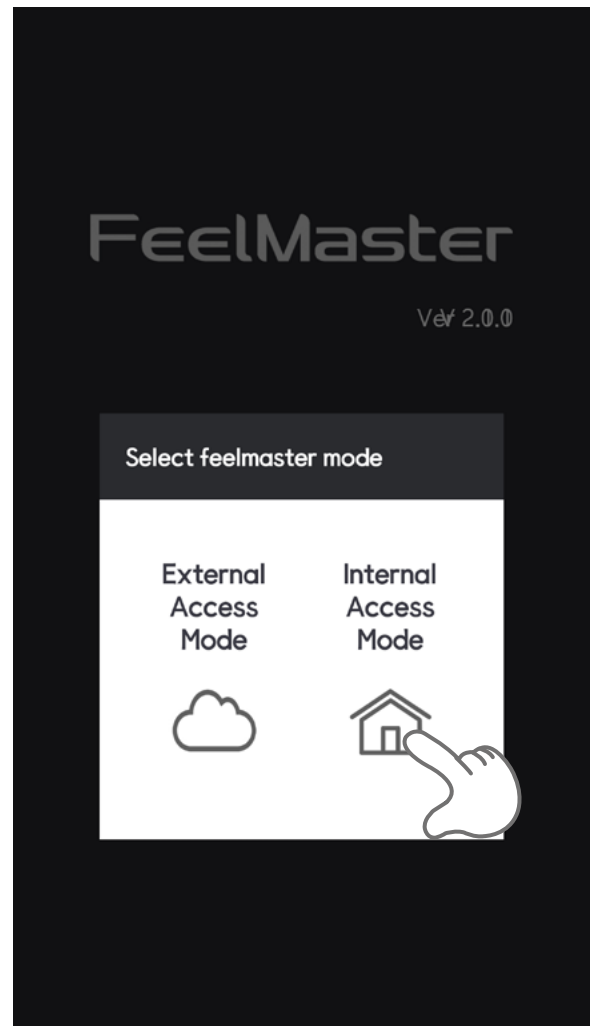
► **External Access Mode**

External Access Mode allows to connect and control the device from everywhere you are as long as you're connected to the internet. In order to use External Access Mode, User account must be created and registered in Cloud through Internal Access Mode.



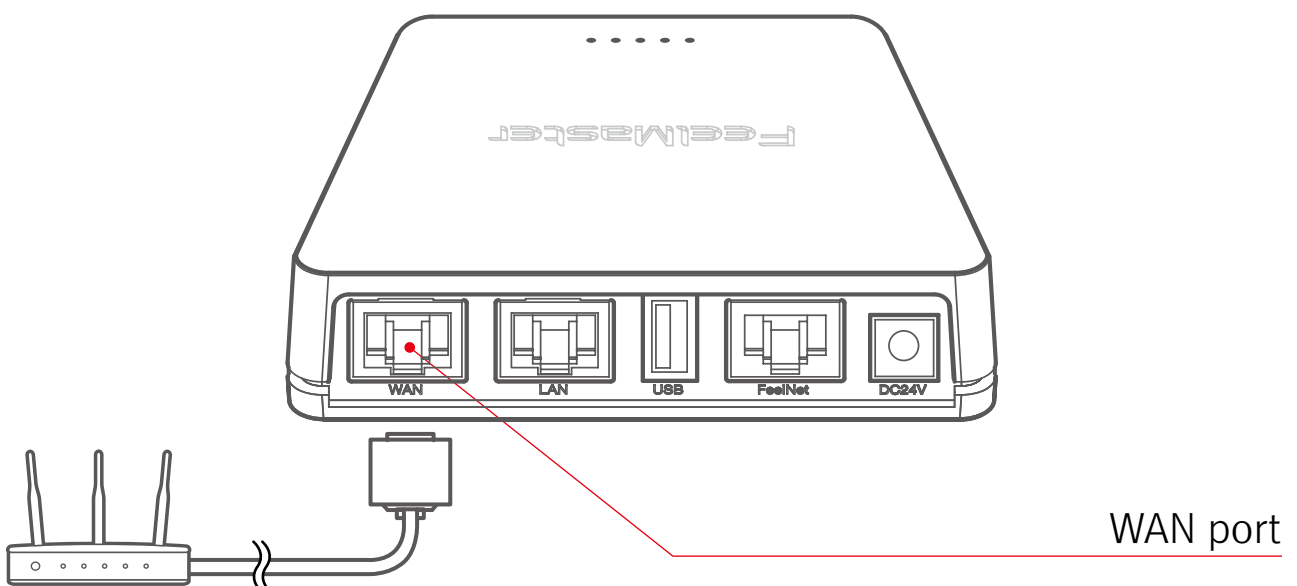
4. Internal Access Mode

Launch FeelMaster App, And select Internal Access Mode.



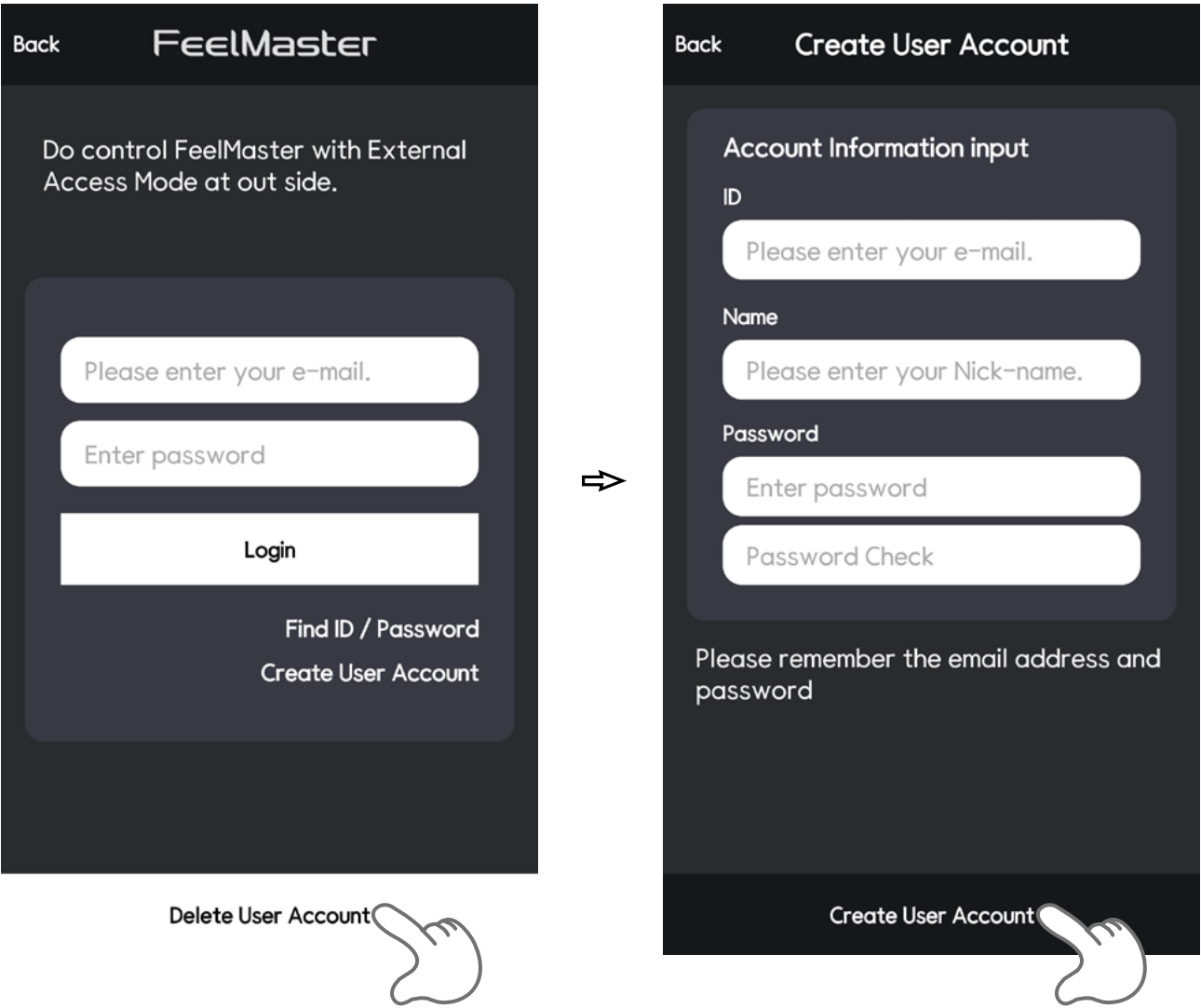
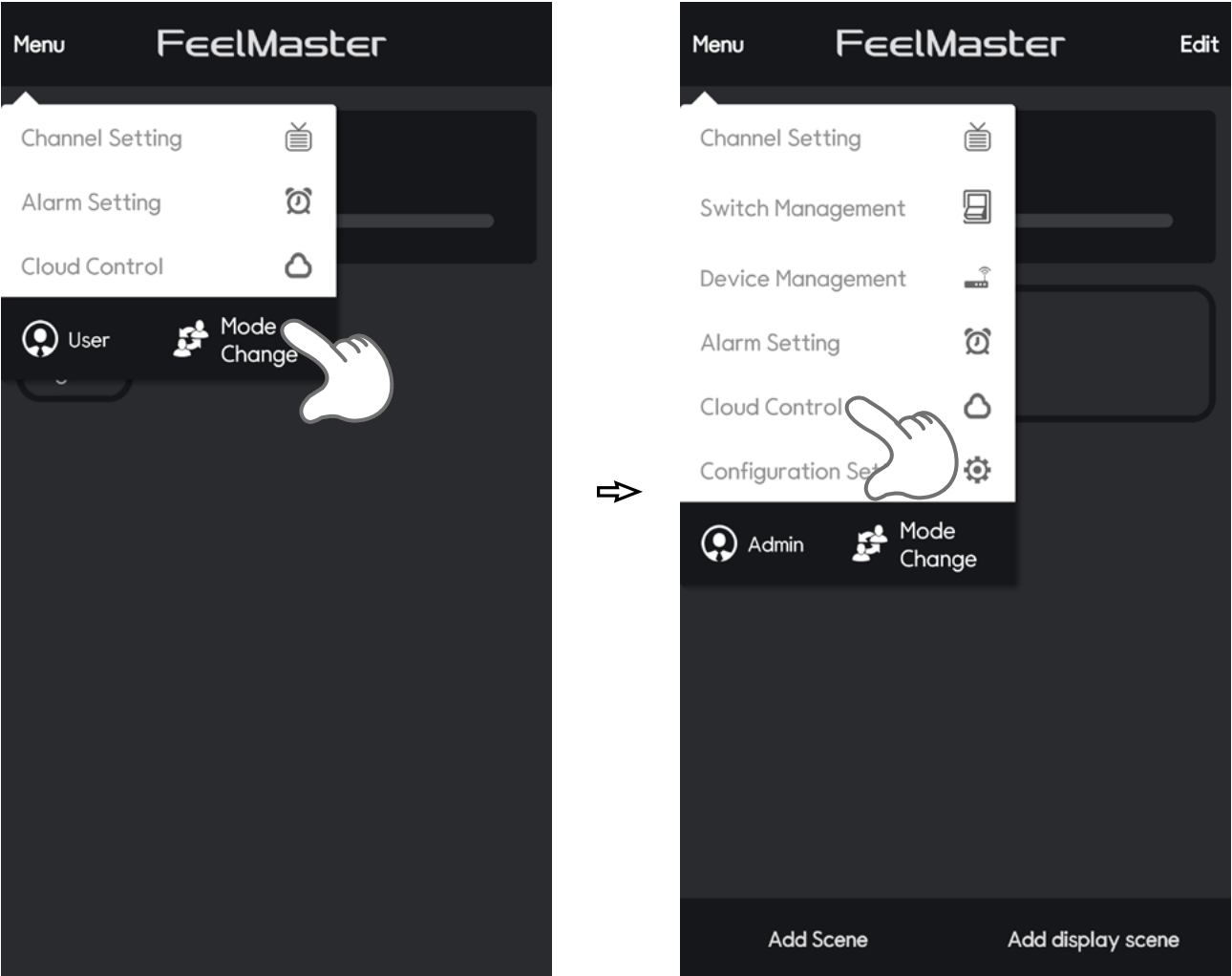
5. External Access Mode

Plug the Internet cable into the WAN port as shown below. And in order to use External Access Mode, User account must be created and registered in Cloud through Internal Access Mode.



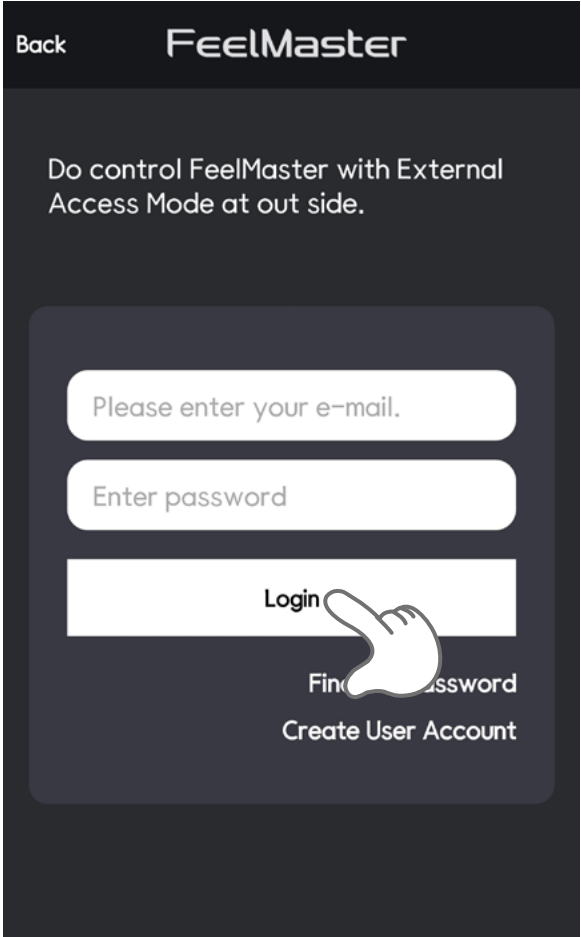
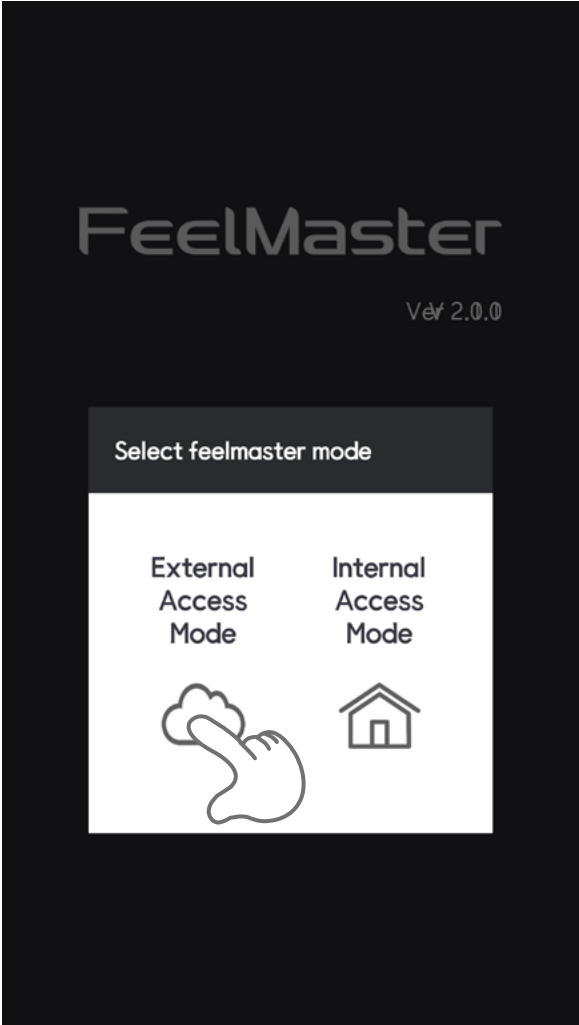
5-1 Register account

In order to use External Access Mode, you must create user account in administrator mode. Select 'MENU' at the top left corner of the app screen. And tab the 'Mode Change' for the administrator mode. After changing the mode to Administrator, Select 'MENU' at the top left corner of the app screen. Tab 'Cloud Control'. And sign in to your FeelMaster account as shown below.

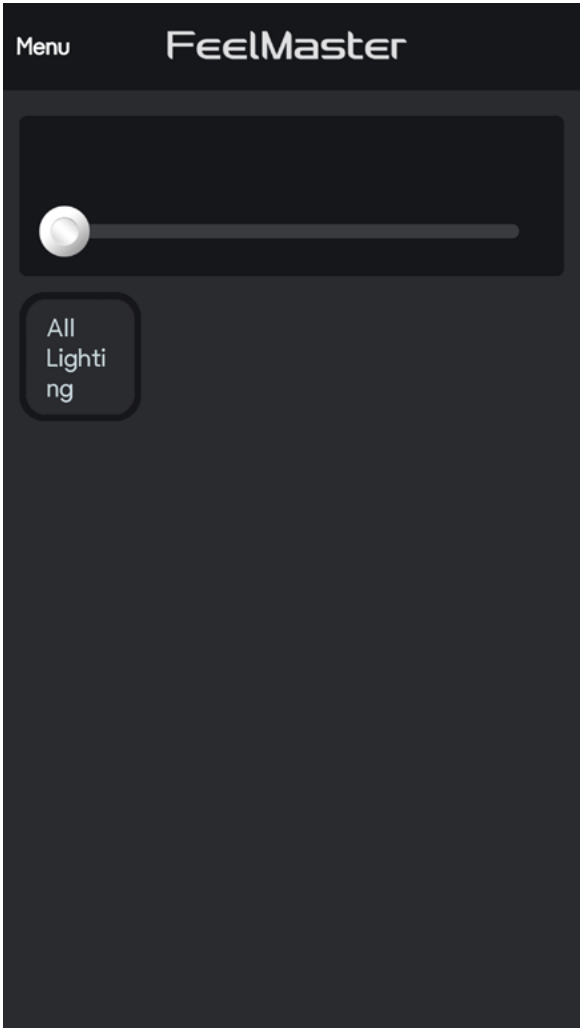


5-2 External Access Mode

Open the Feelmaster App again. Select External Excess Mode, And login with user account.

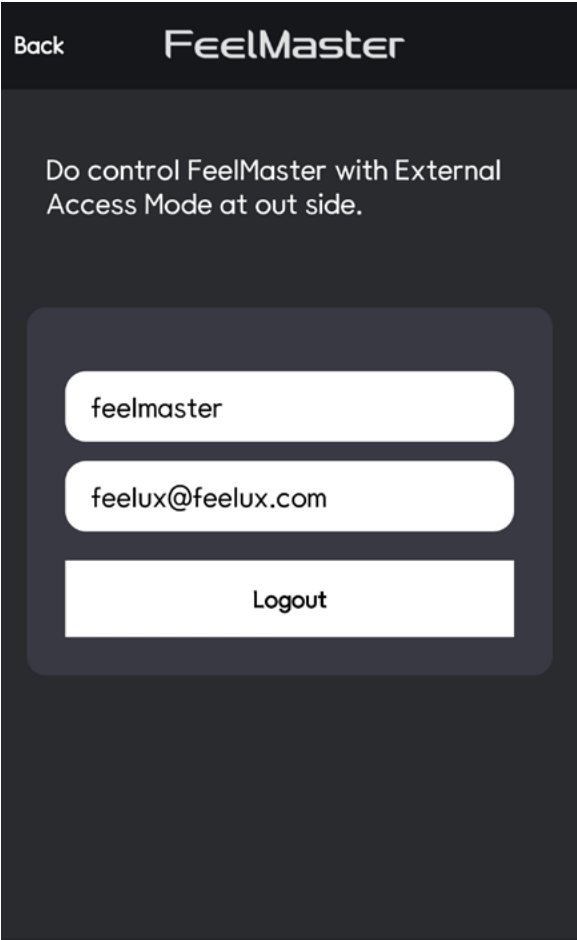
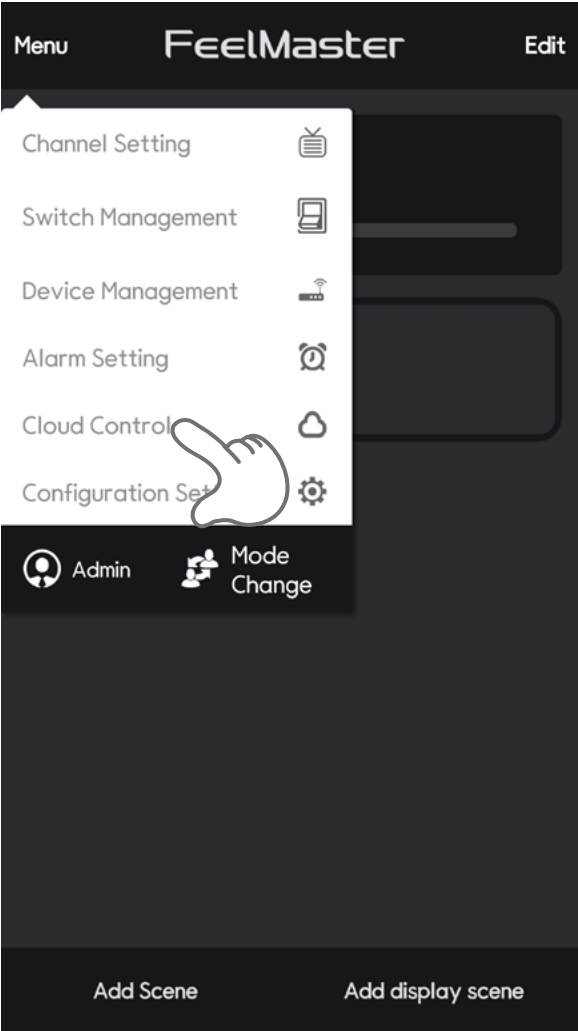


Delete User Account

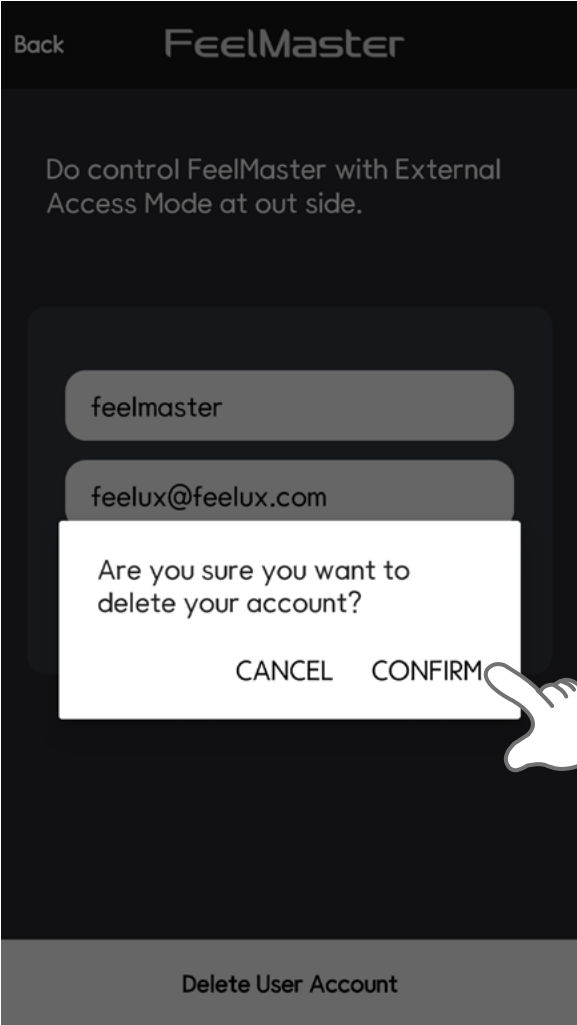


5-3 Delete account

Delete user account if you do not want to use 'External access mode' (user account cannot be created in duplication)
Tab 'Cloud Control'.



Delete User Account

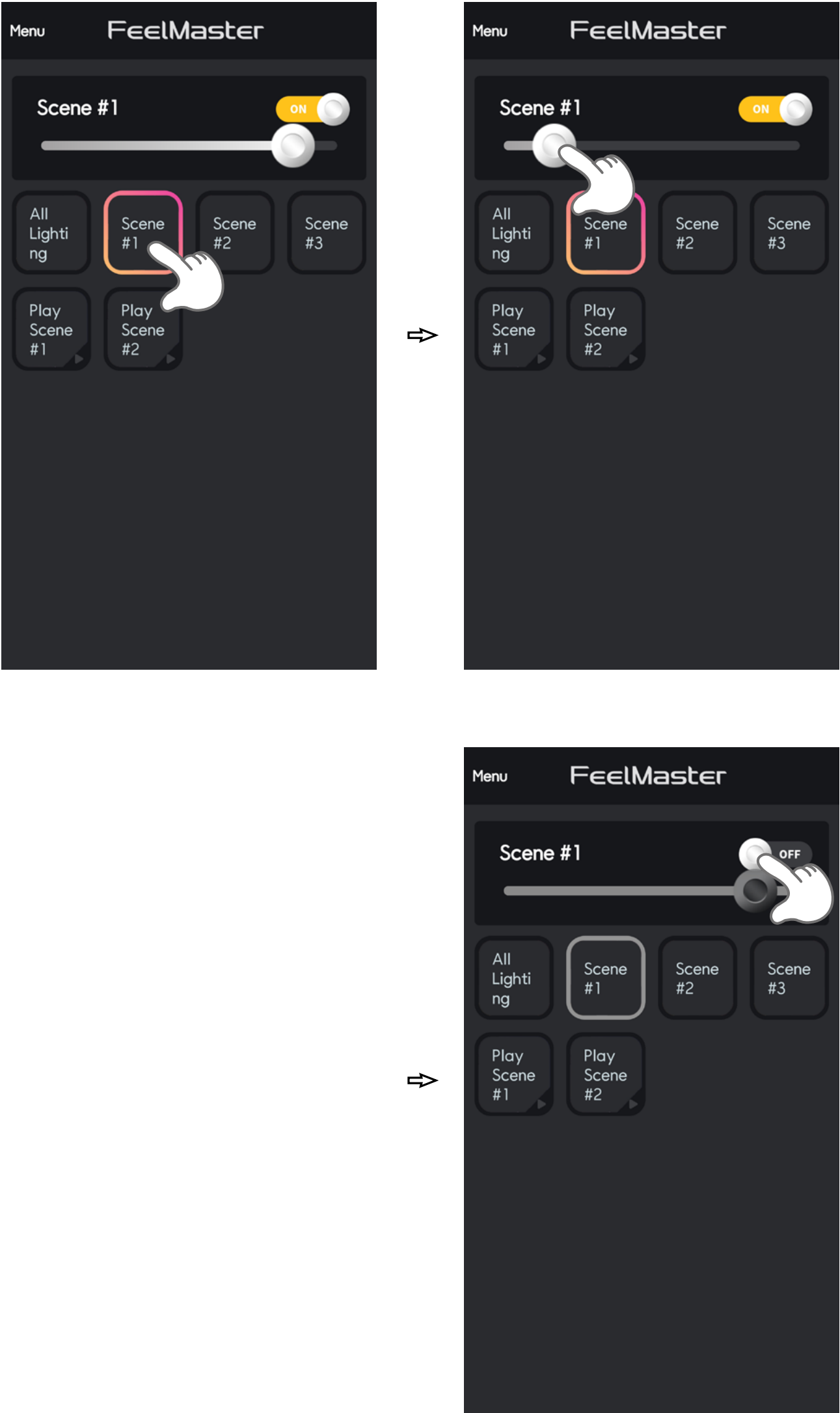


6. Setting User Modes

FeelMaster has two kinds of user mode.

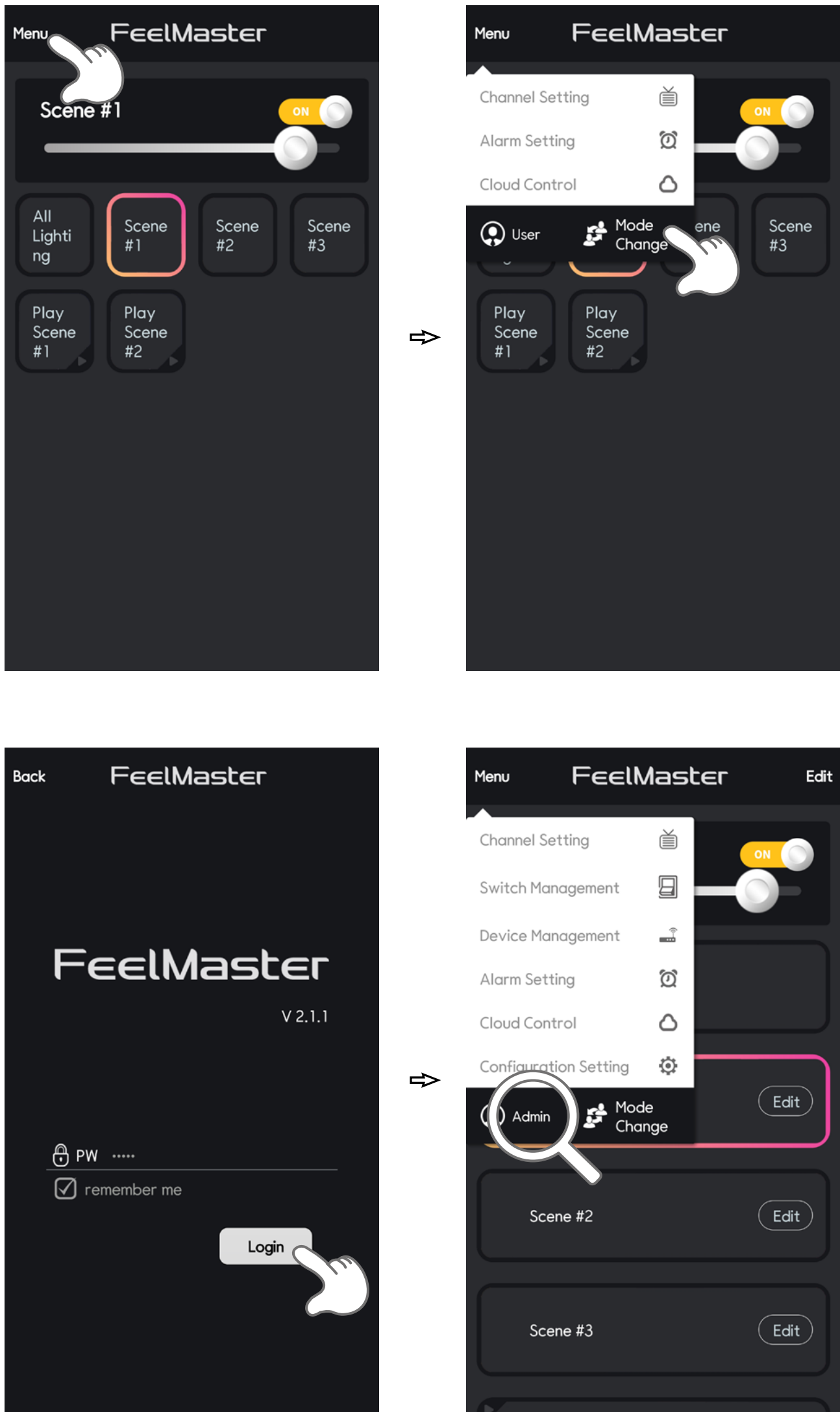
6-1〉Normal User Mode

You can control the device and color level without login of administration as shown below.



6-2> Administration Mode

You can edit all the devices, scene and setting in administration mode. Select 'MENU' at the top left corner of the app screen. And tab the Change Mode for the administrator mode as shown below. *You can login with temporary password '12345678' And change the password after first login.

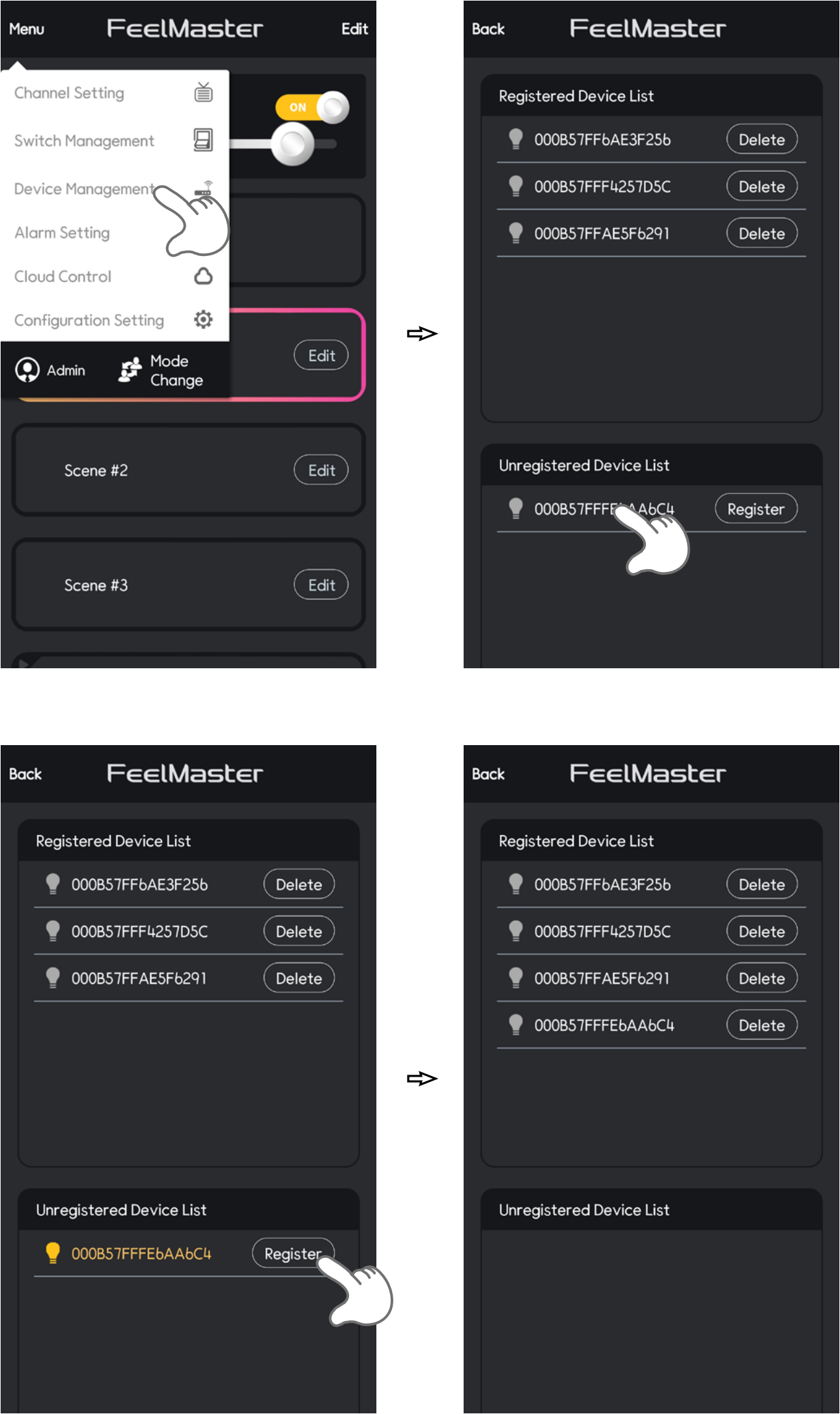


7. Device Management

You can add and delete the device in Device management Menu.

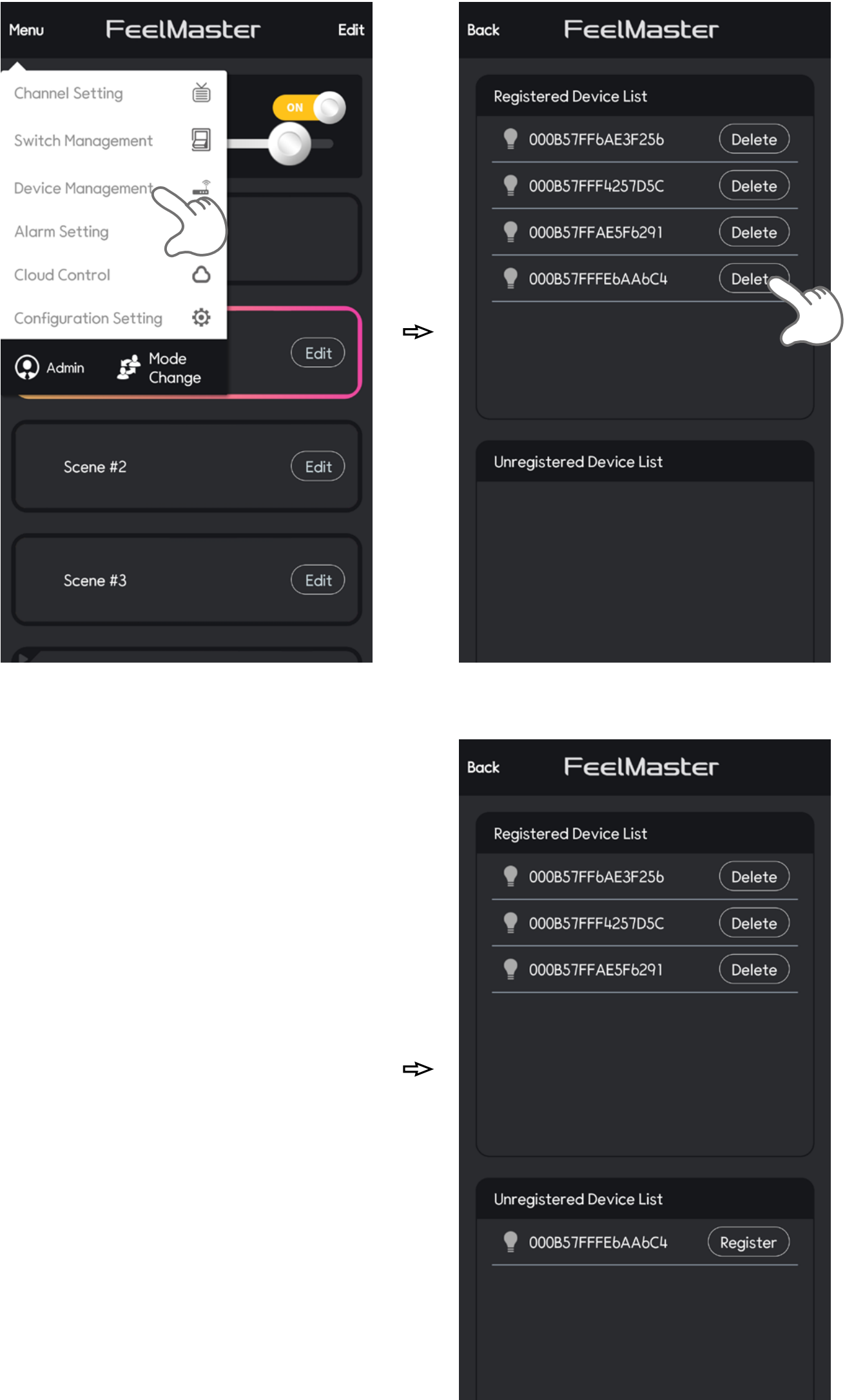
7-1> Device registration

You can add the device in Administration mode as shown below. *Connect the power of lighting, the lighting name is created in the Unregistered Device list.
Tab the device that you want to add in Unregistered Device List.
Then flashing yellow light for a few seconds.
After the flashing, Tab the Register button. You can see the device in Registered Device List.



7-2 Delete the device

You can delete the device in Device Management Menu as shown below. Tab the device that you want to delete in Registered Device List. Then flashing yellow light for a few seconds. After the flashing, Tab the delete button. You can see the device in Unregistered Device List.

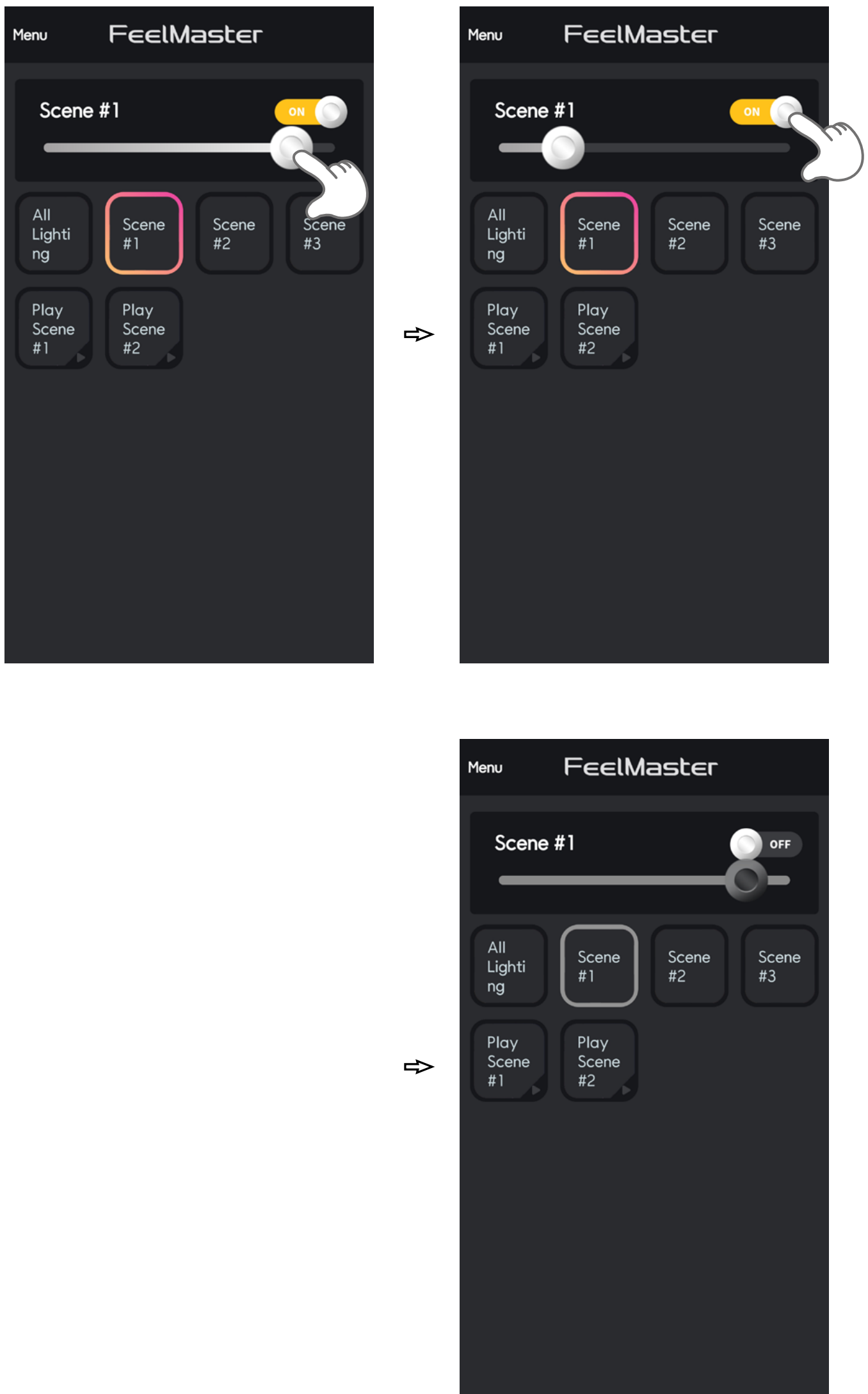


8. Control the device

You can set and control the devices in 'Channel Control' Menu.

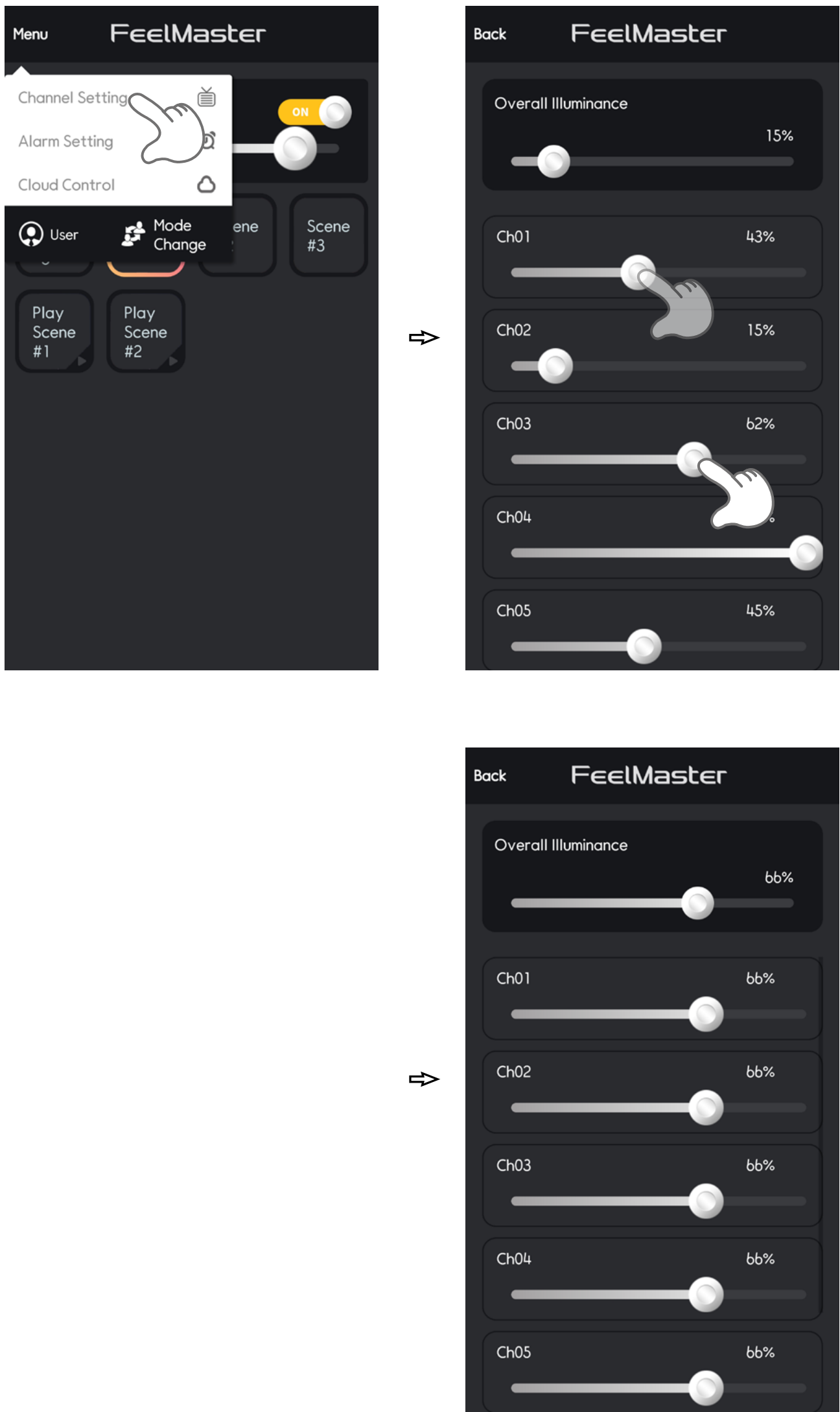
8-1〉Entire control

You can turn on/turn off and control all the device using the 'On/Off' tab and change the color and brightness using the slide bar roll at the top right corner of the app screen as shown below.



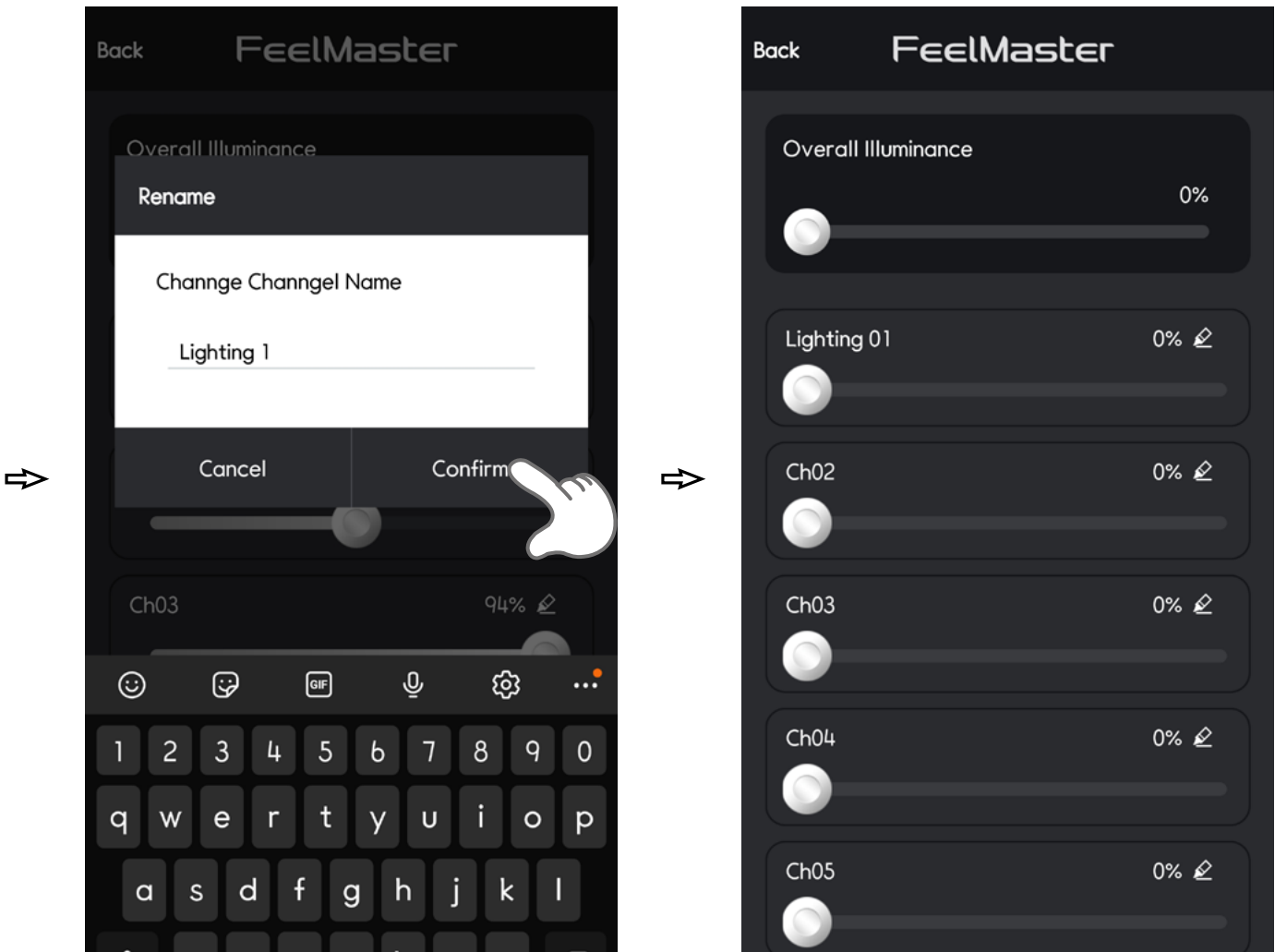
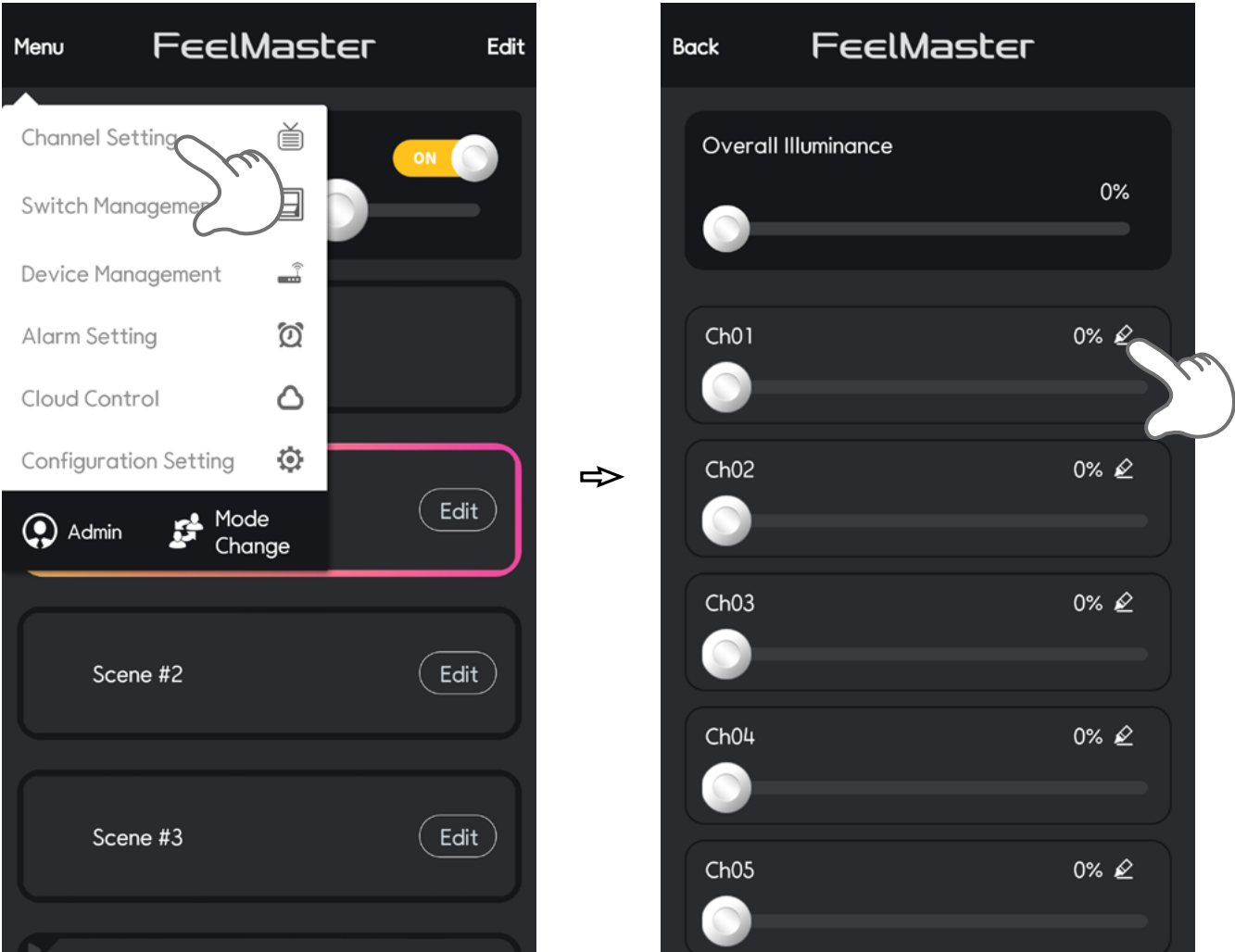
8-2》Individual control

You can turn on/turn off and control each device separately as shown below. Click the MENU at the top left corner of the app screen. And tab the Channel Setting.



8-3> Change the name of device channel

Each device channel is automatically set with serial number by FeelMaster. You can change the name as shown below.

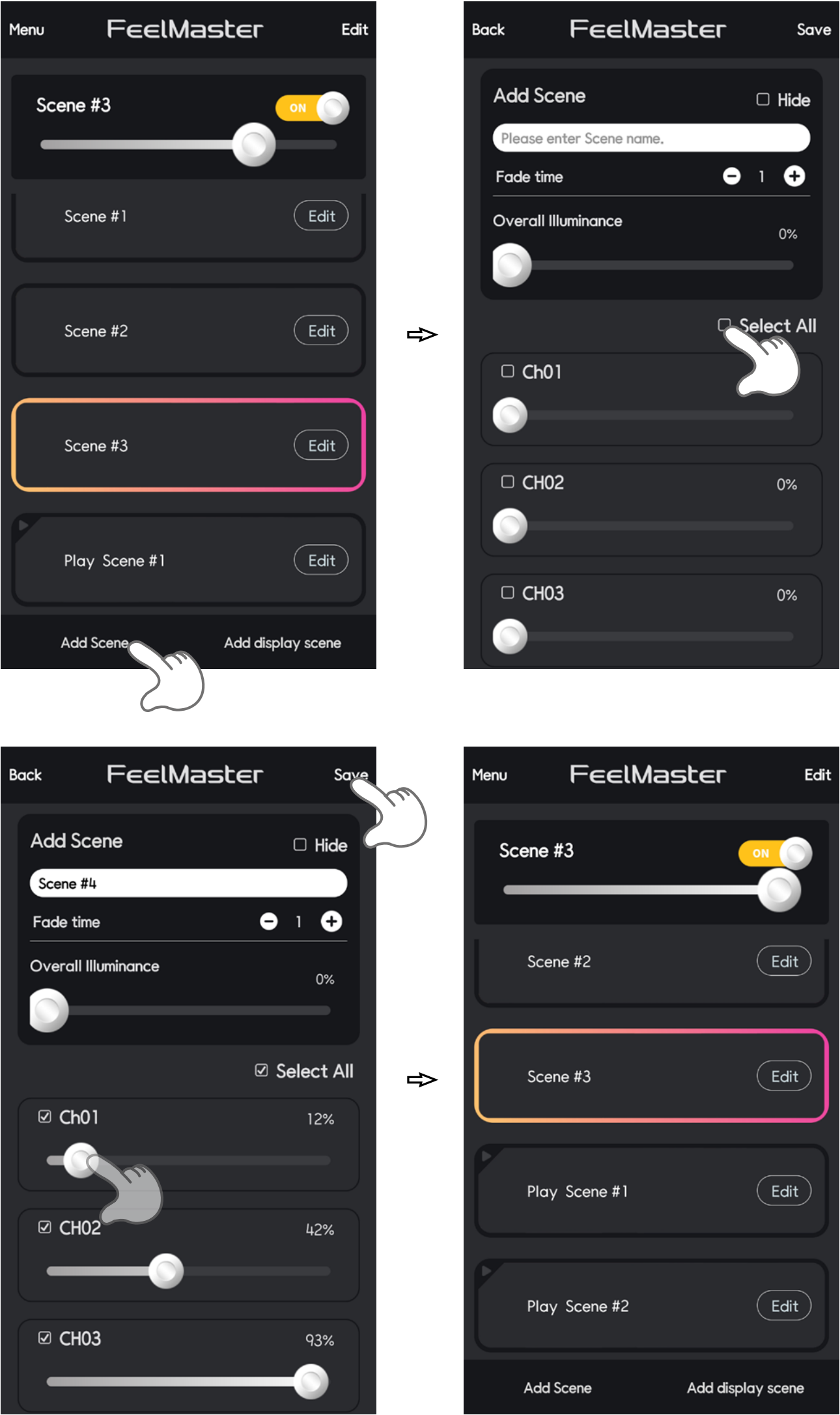


9. Set up a scene

You can create and set the light scene you want.

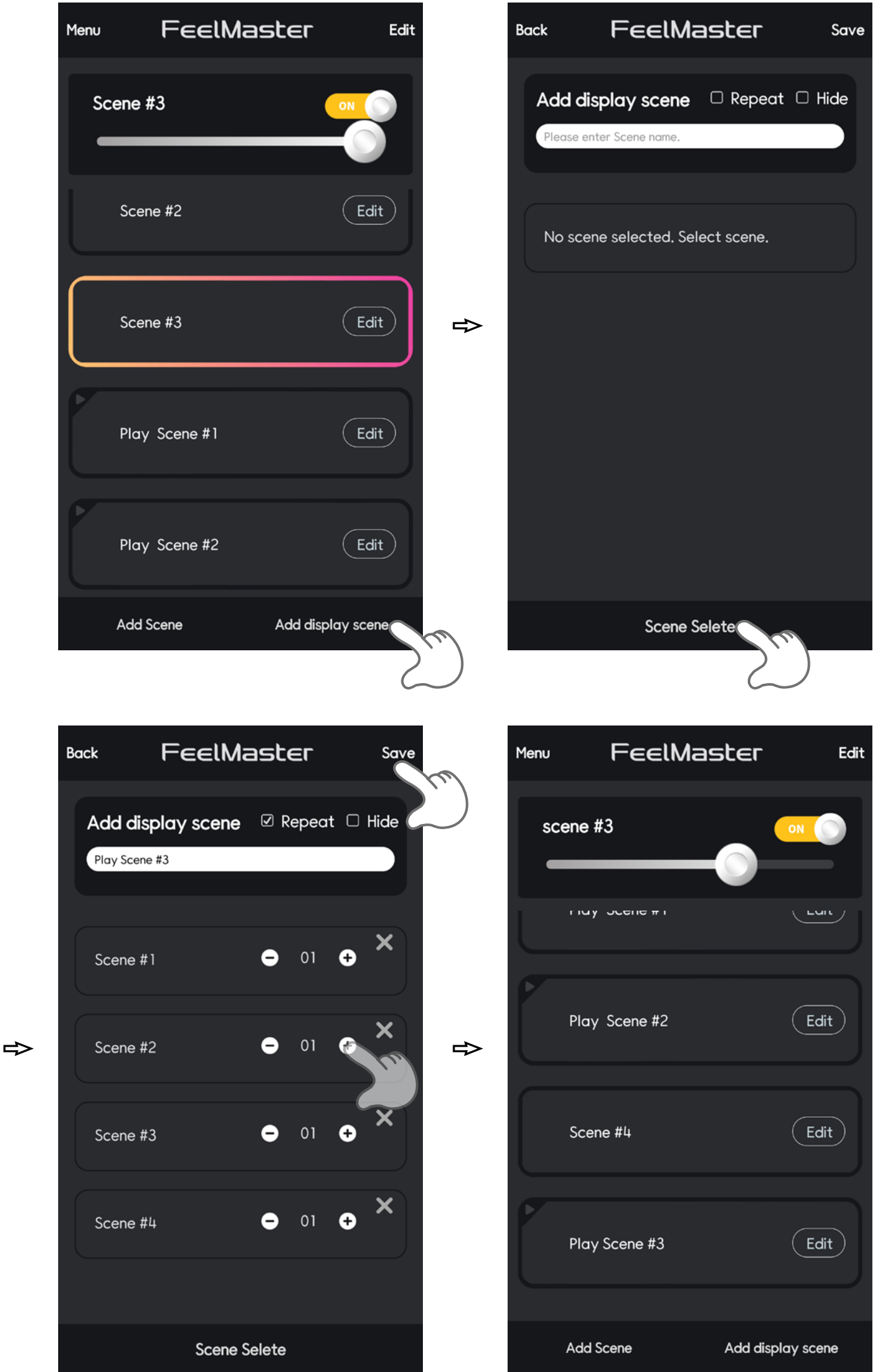
9-1> Save a Scene

Tab the 'Add Scene' Menu at the bottom of left corner. You can choose the light that you want to add to the scene. And save the scene with the new scene name.



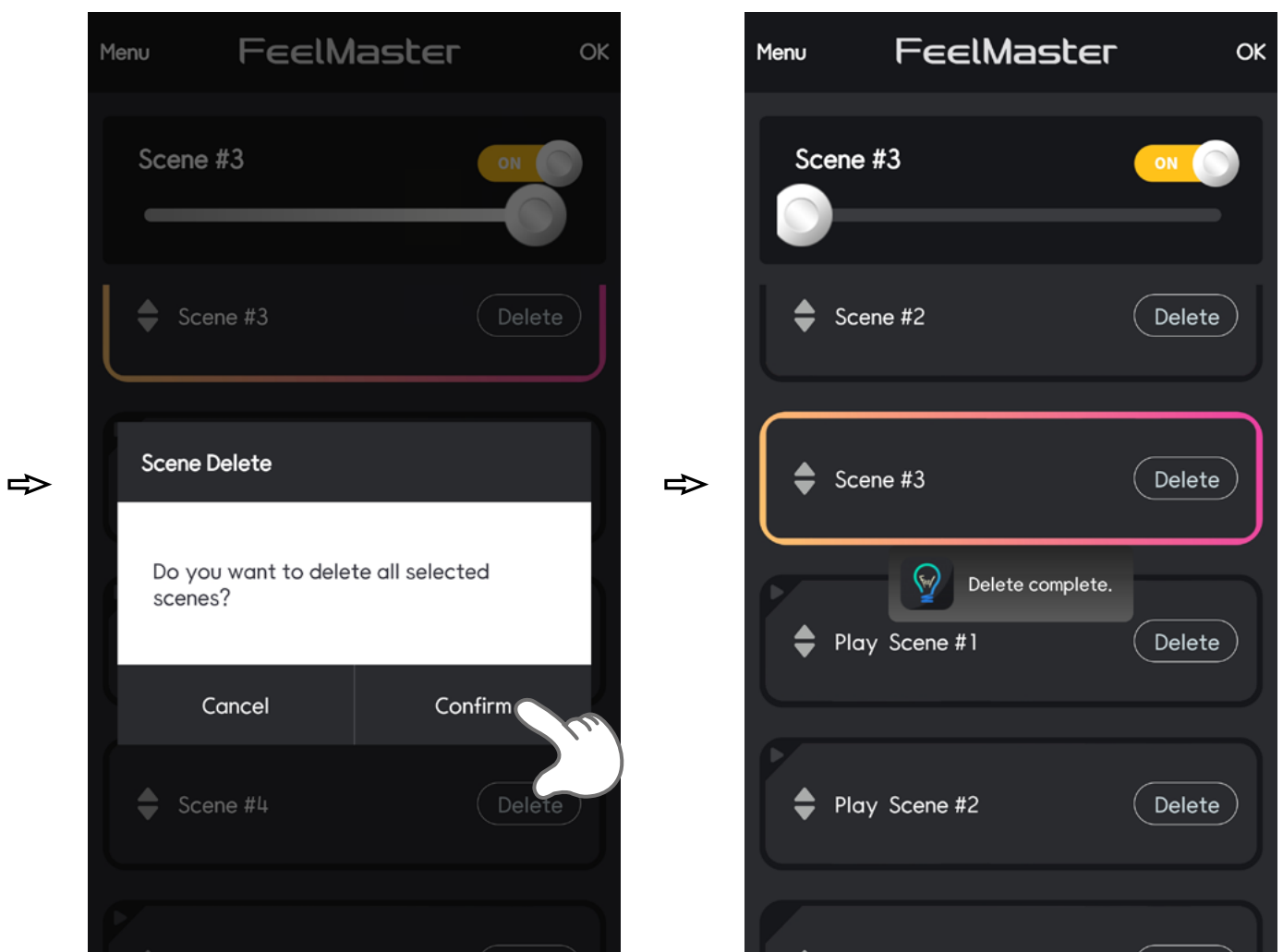
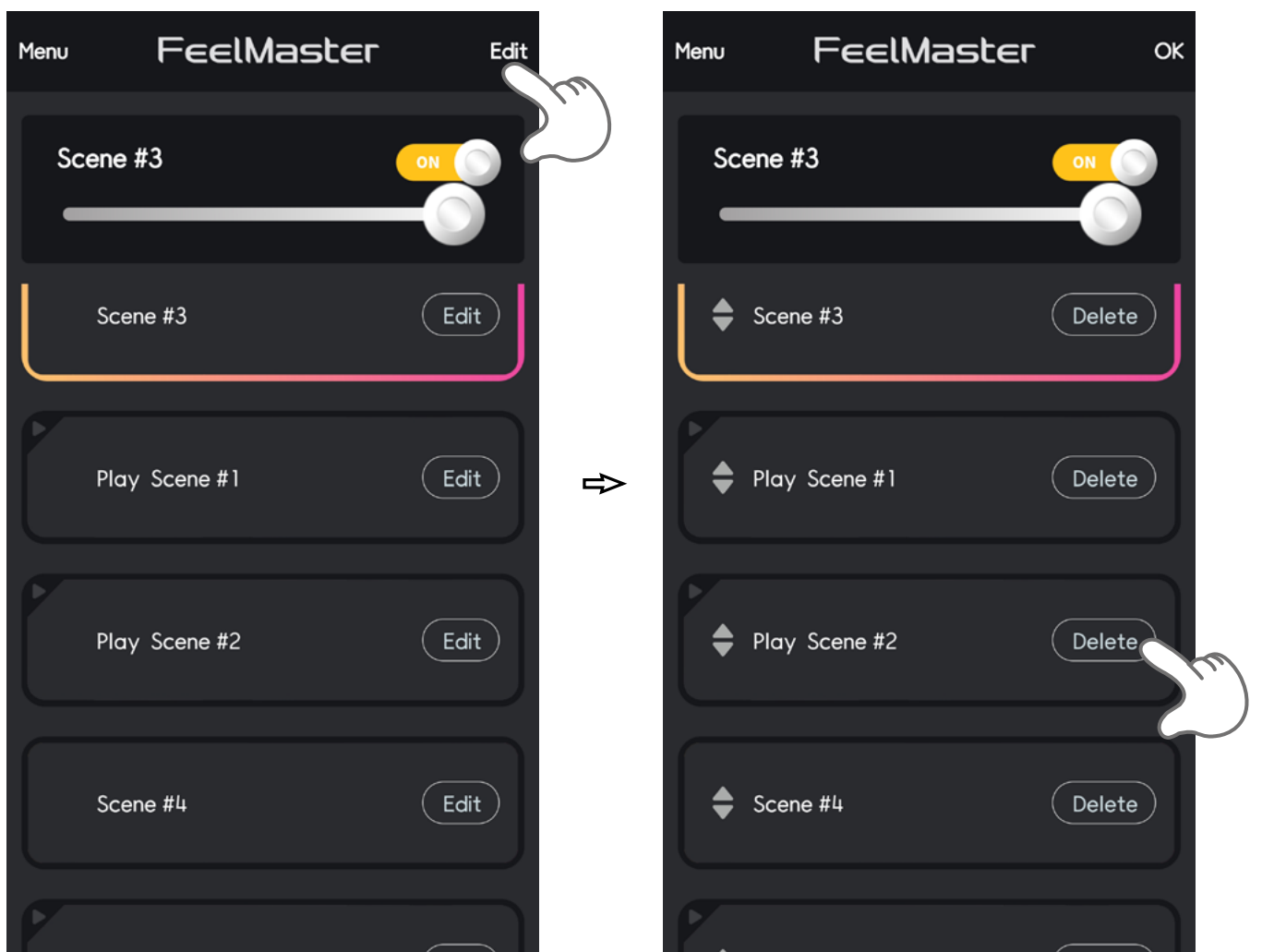
9-2> Set up a play scene

You can play the scenes you saved in the scene list. And you can set the play time of each scene.



9-3> Delete Scene

You can remove the Scene recorded through the Edit function as shown below.

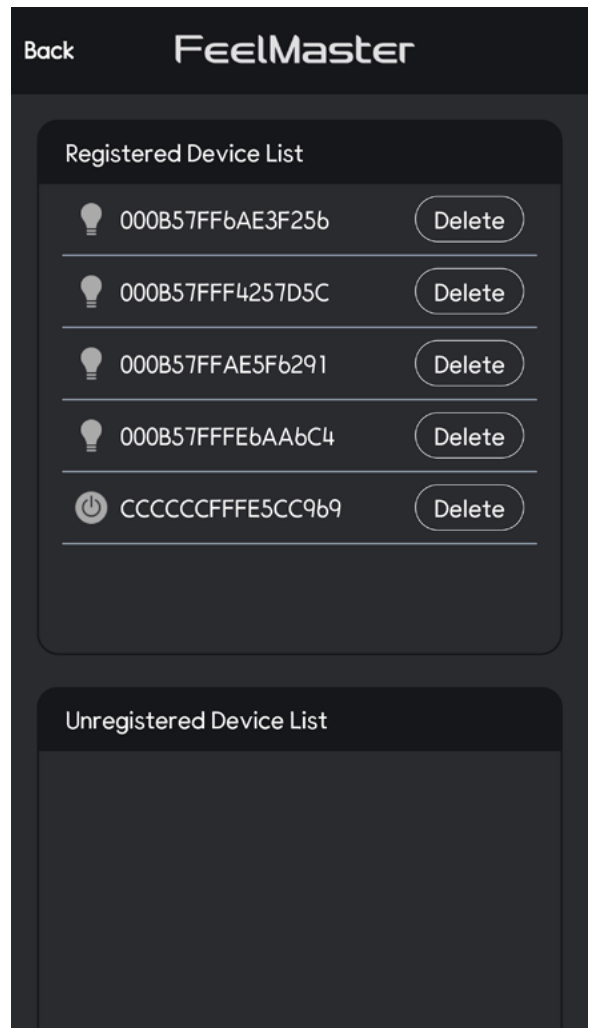
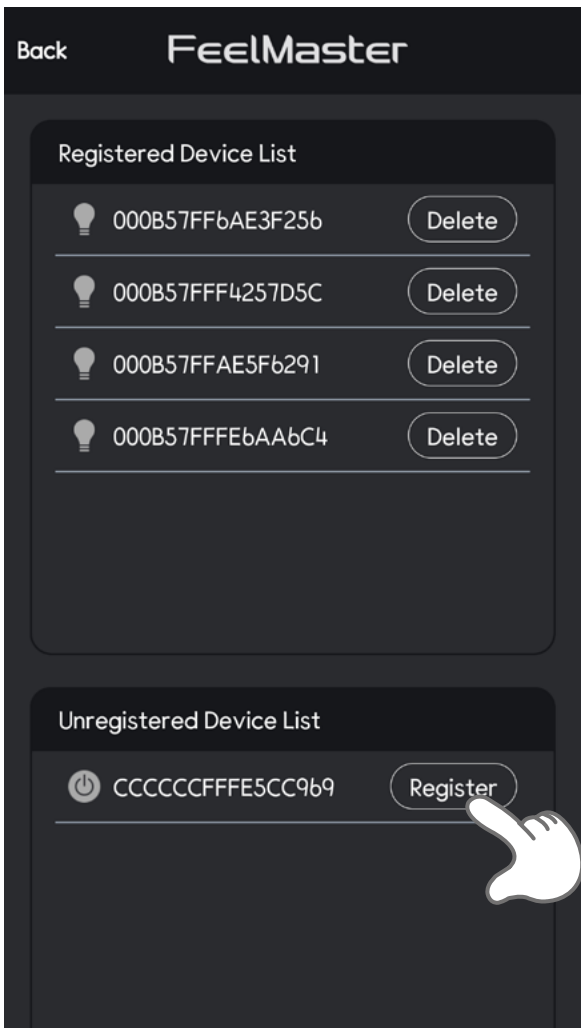
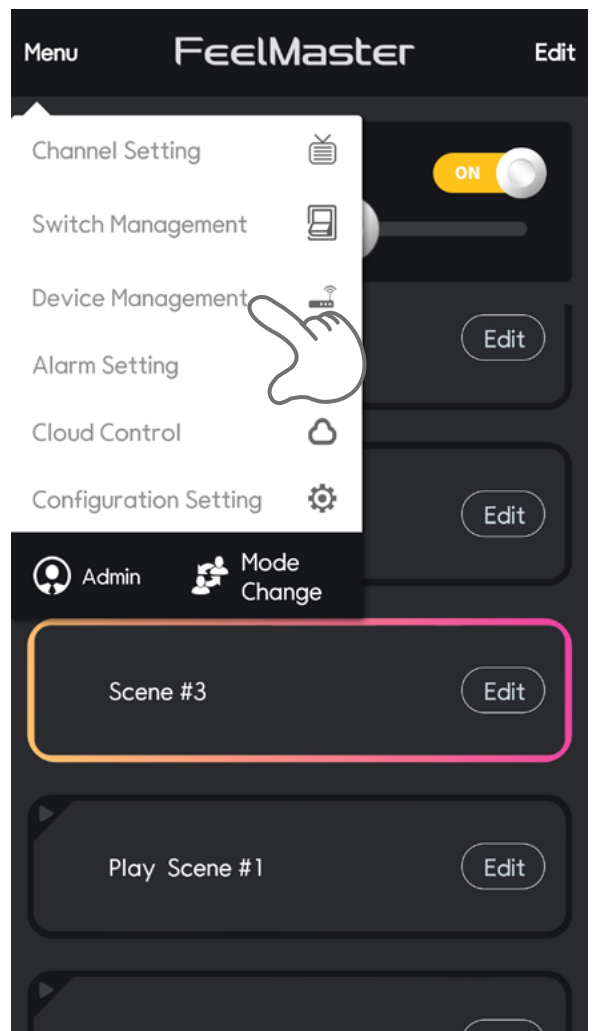


10. Set up a wireless remote controller

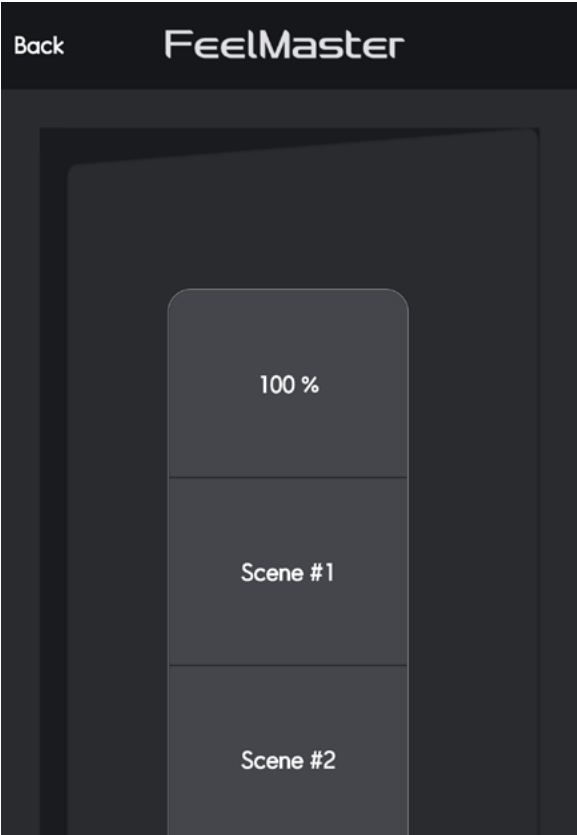
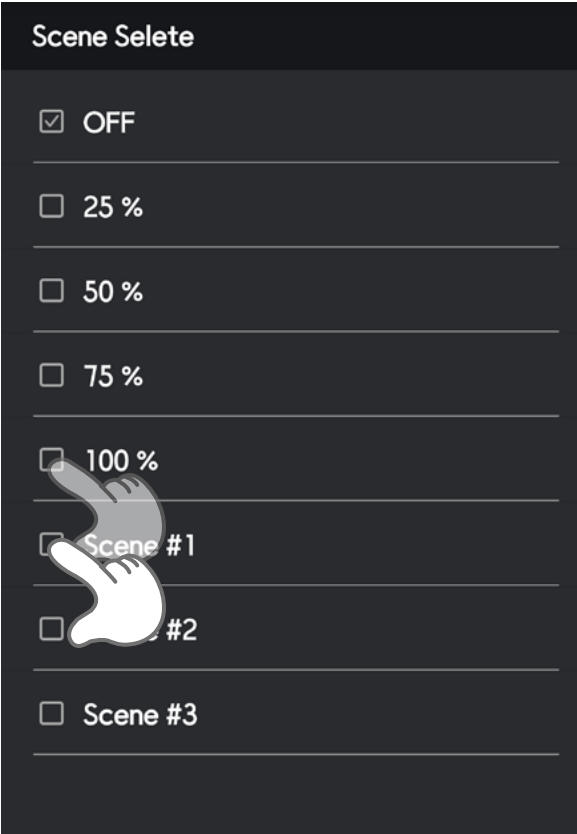
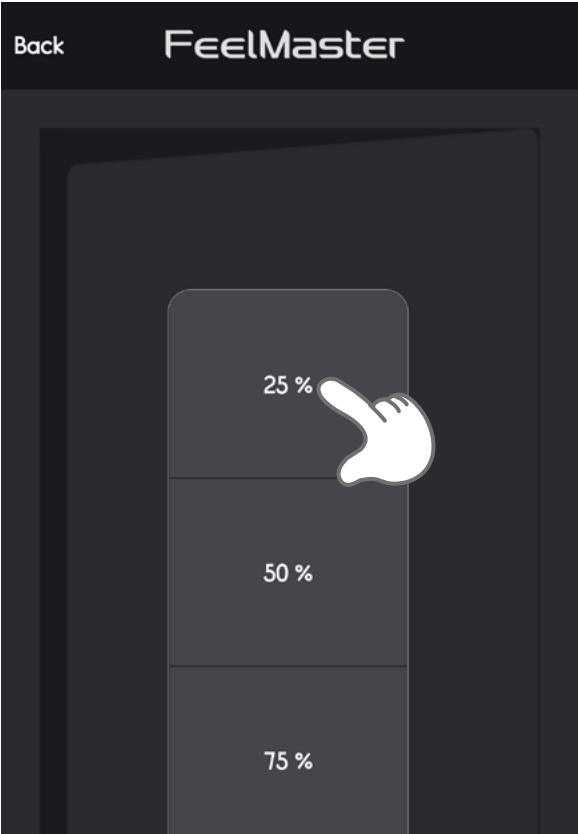
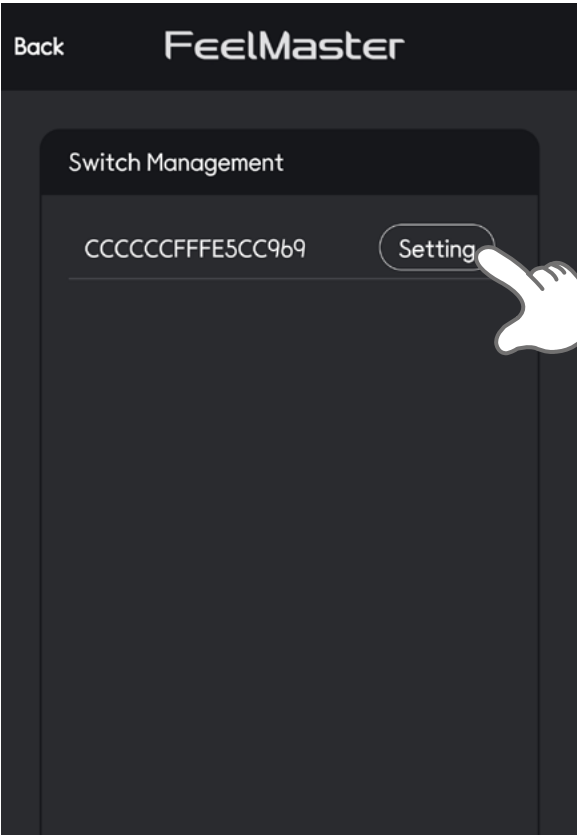
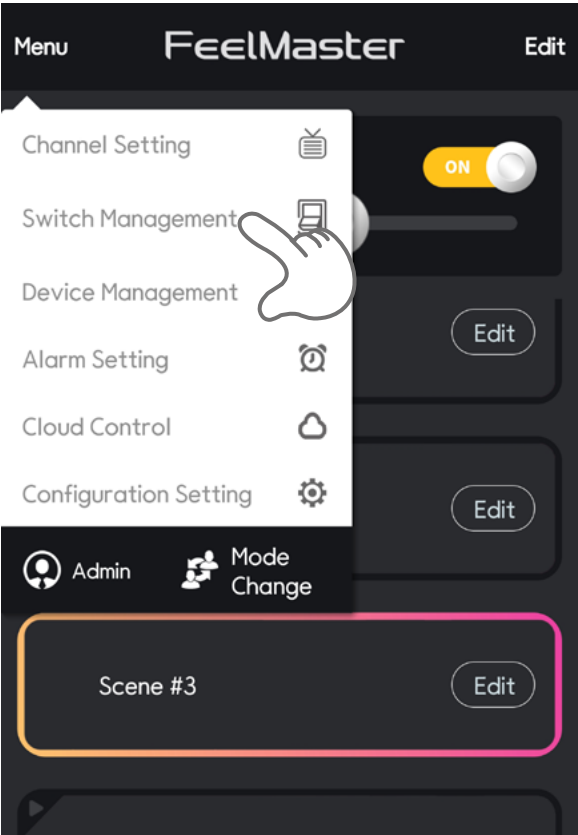
In order to use wireless remote controller, you need to register the remote device to FeelMaster.

10-1> Controller registration

Press the button on back side of the remote device for 3 seconds to set the device into pairing to FeelMaster App. Tab 'Register button' of the device in Unregistered Device List as shown below. You can see the device in Registered Device List.



10-2> Setting the switch buttons
You can set the switch buttons with Scenes that you want.
You can have the Scenes that you set by the switch buttons.

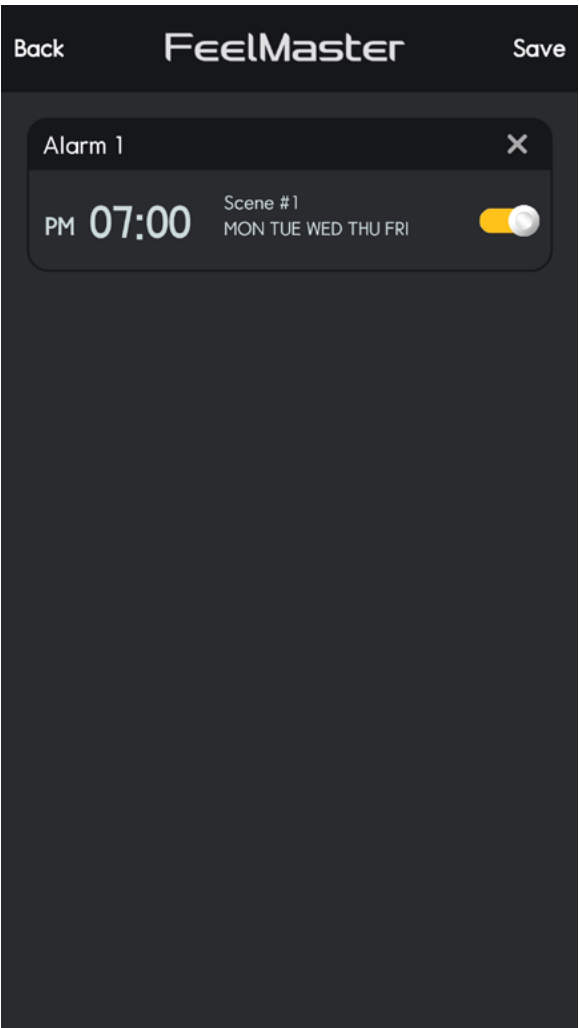
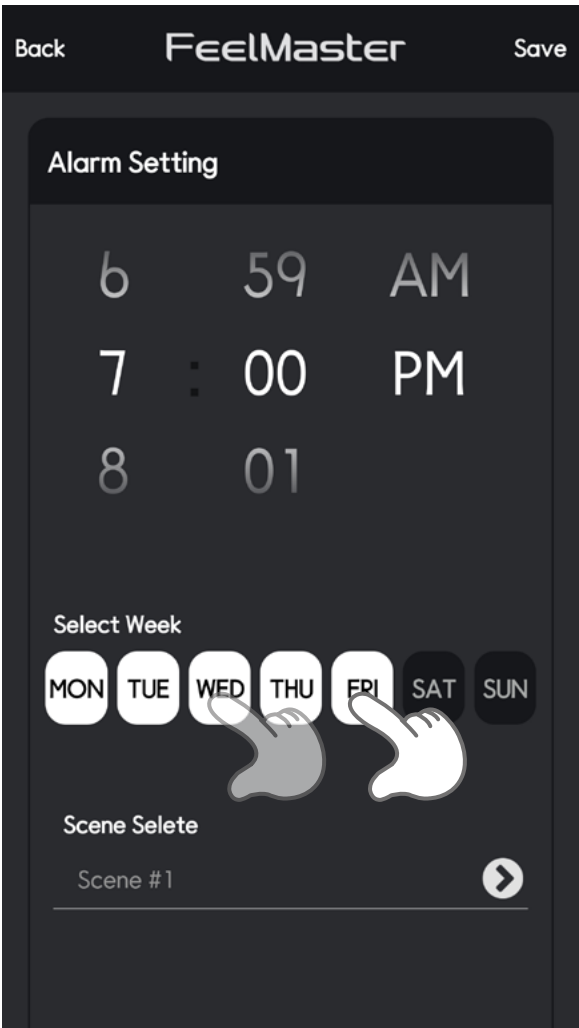
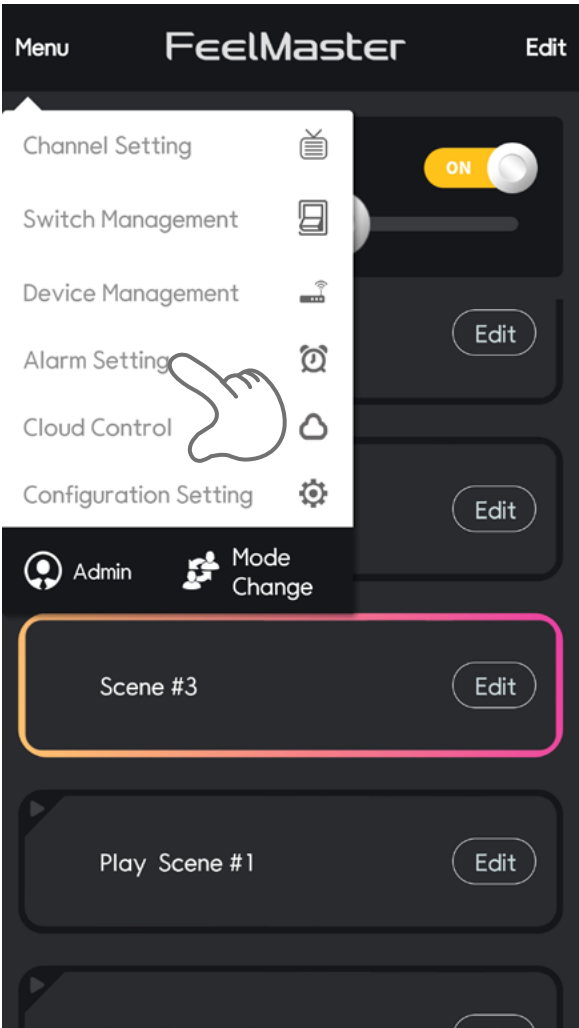


11. Set up an Alarm function

You can set Alarm function with specific scenes.

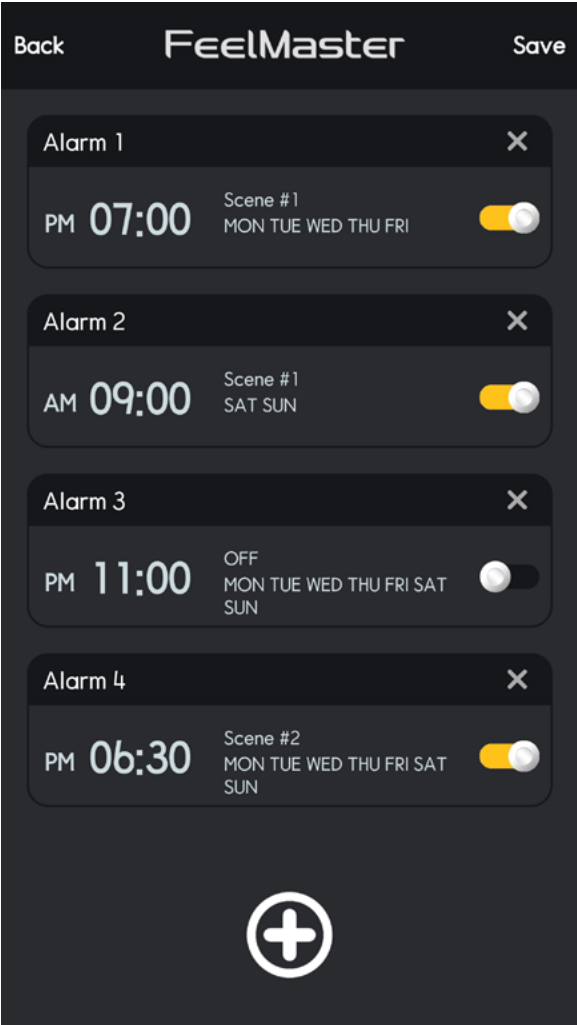
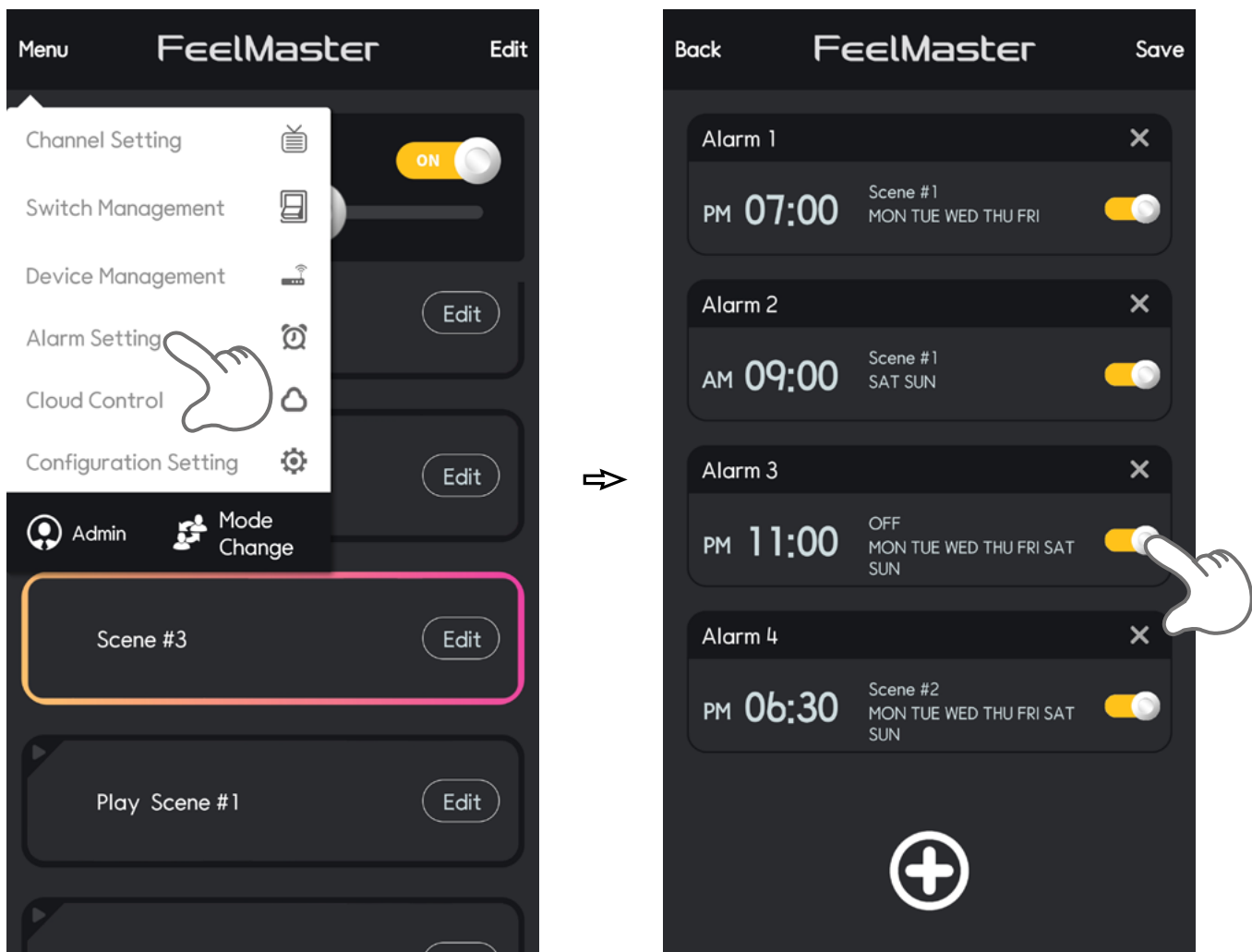
11-1 Add Alarm

You can set the Scene at Specific time you want as shown below.



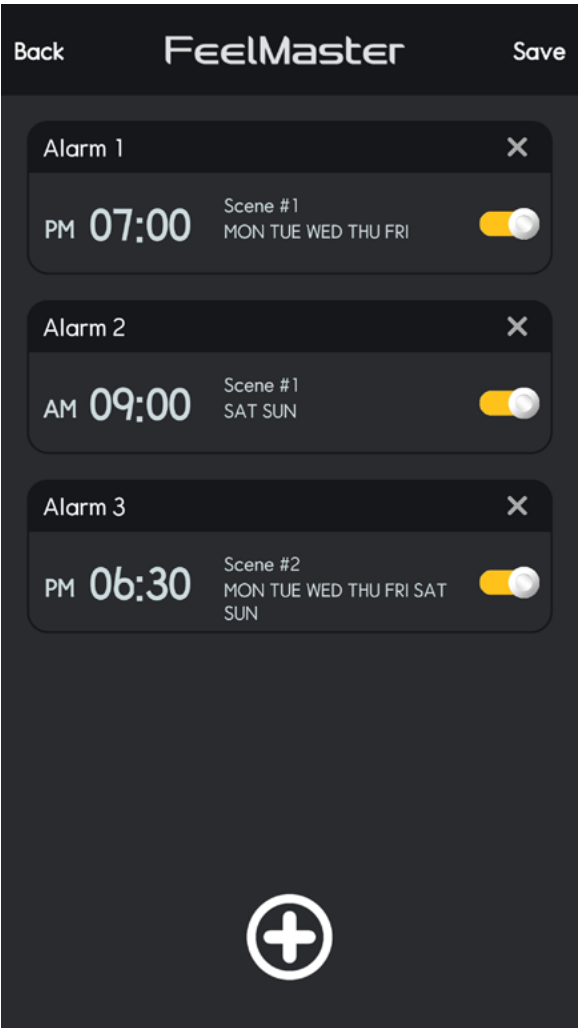
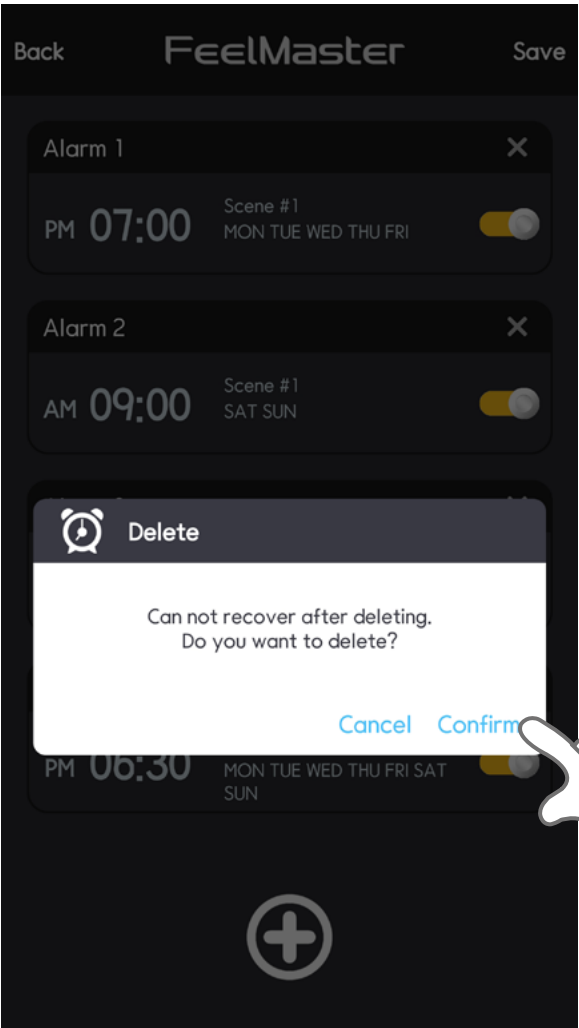
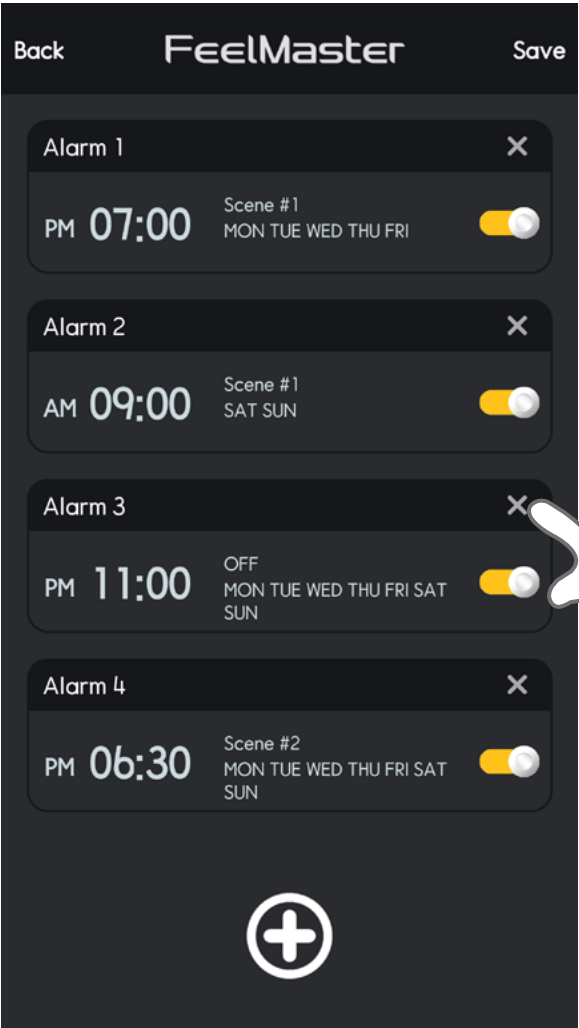
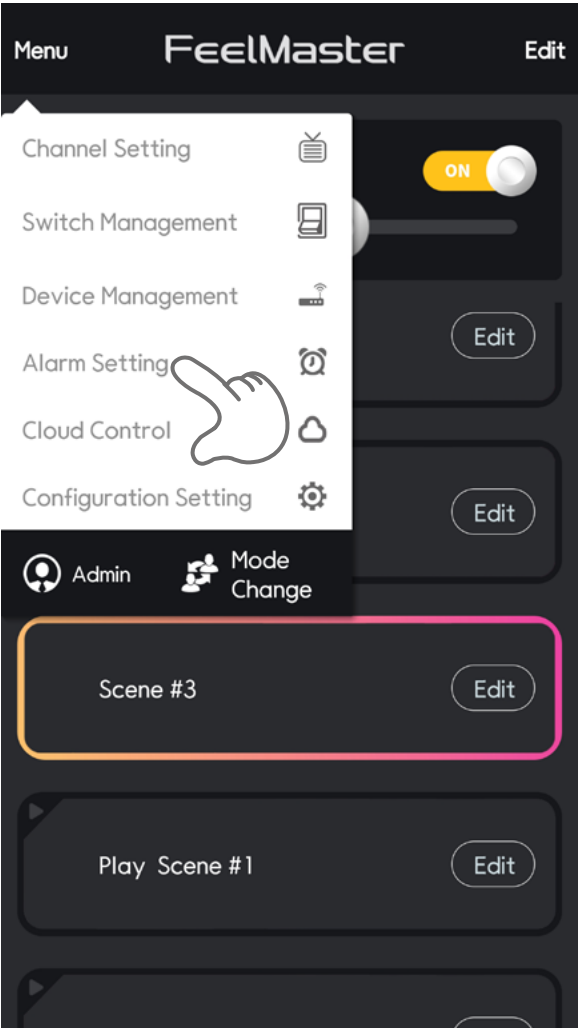
11-2) Alarm Setting

You can make each set scenes in Alarm list activated and deactivated by clicking the button as shown below.



11-3) Delete Alarm

You can remove the Alram recorded as shown below.

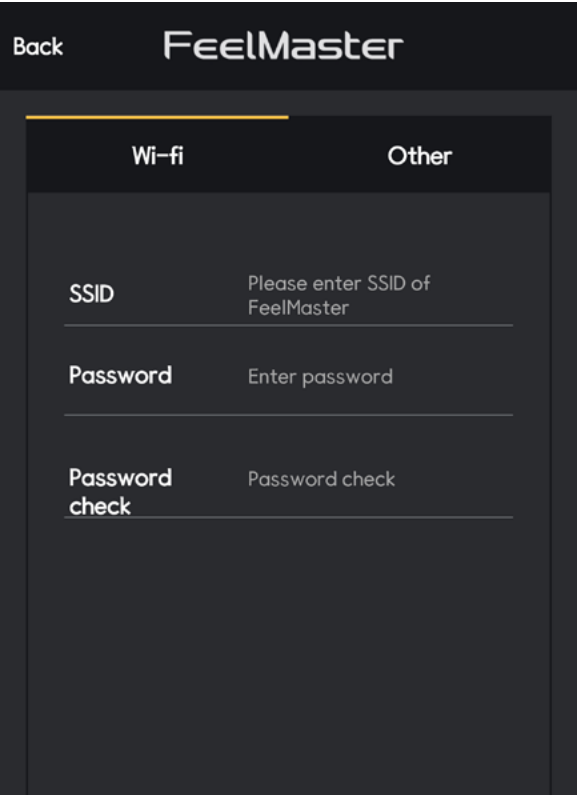
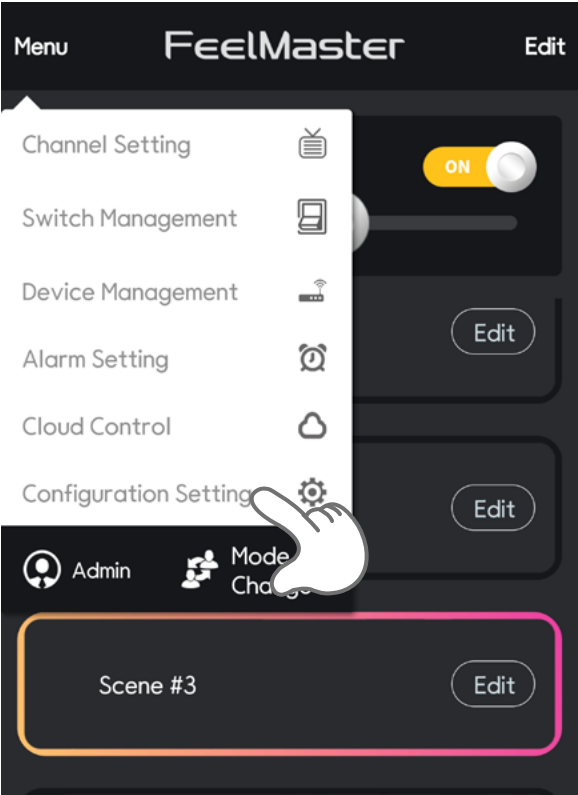


12. Configuration setting

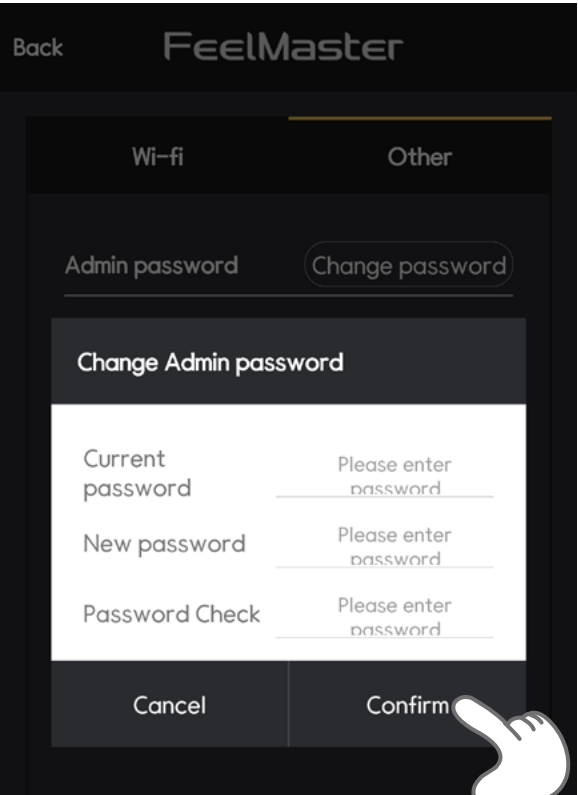
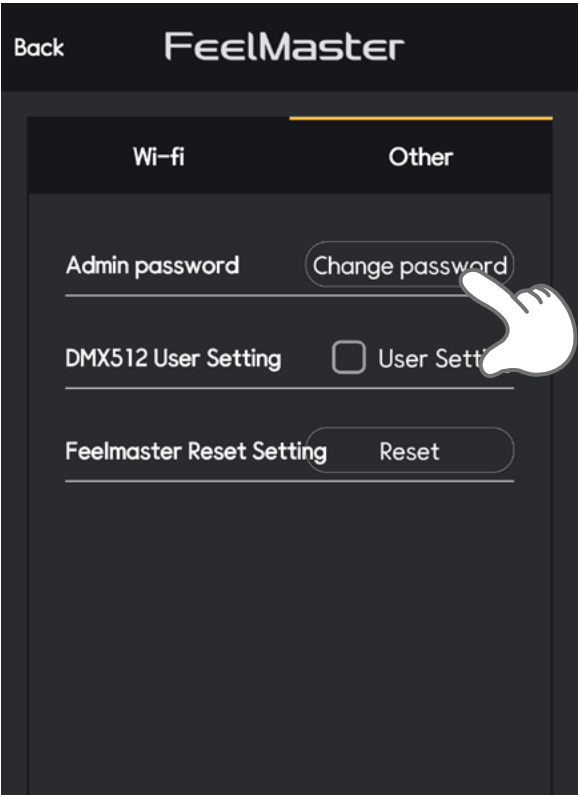
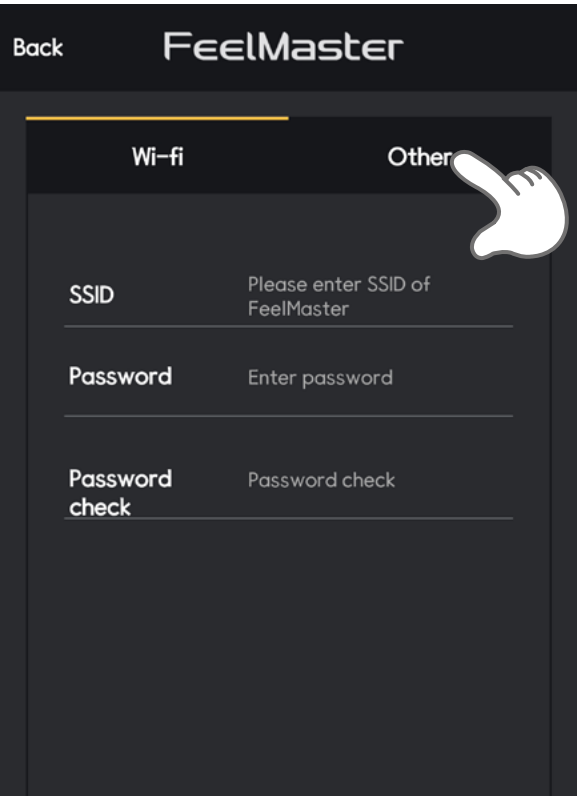
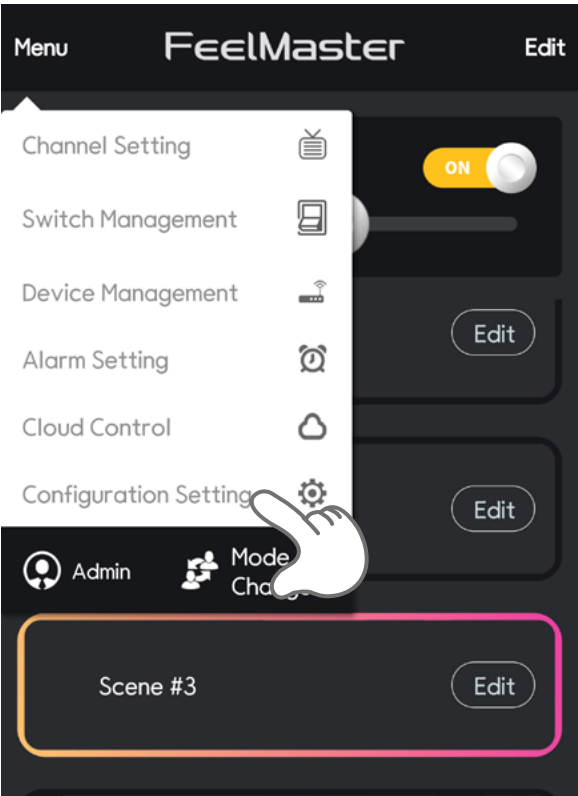
You can set the Wi-Fi, use DMX control and reset all setting value.

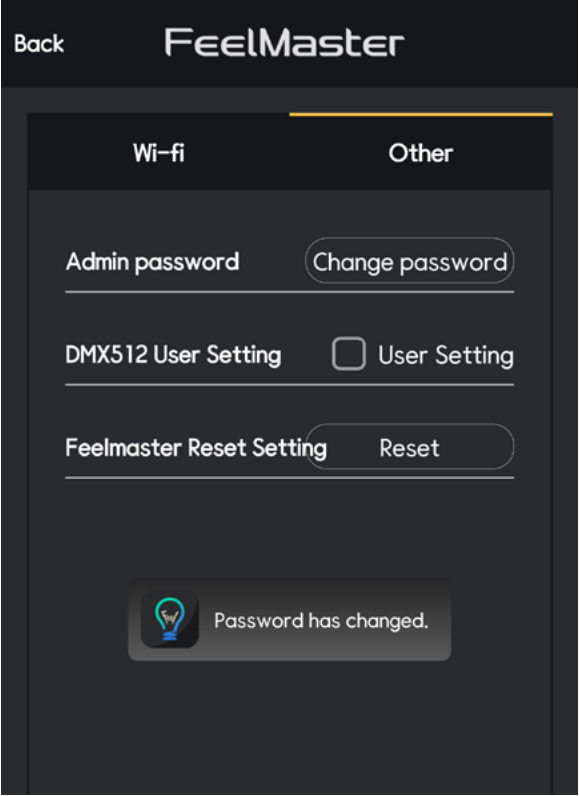
12-1〉Wi-Fi Setting

You can change the name and password of FeelMaster Wifi as shown below.



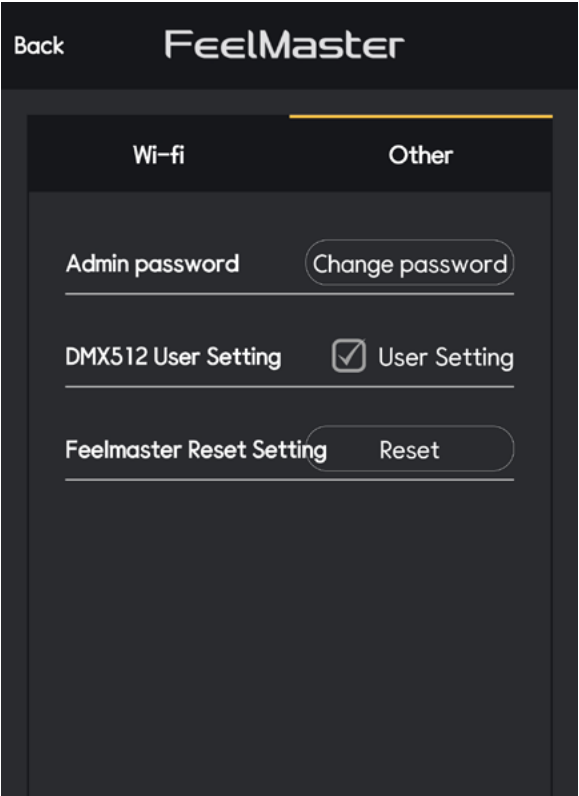
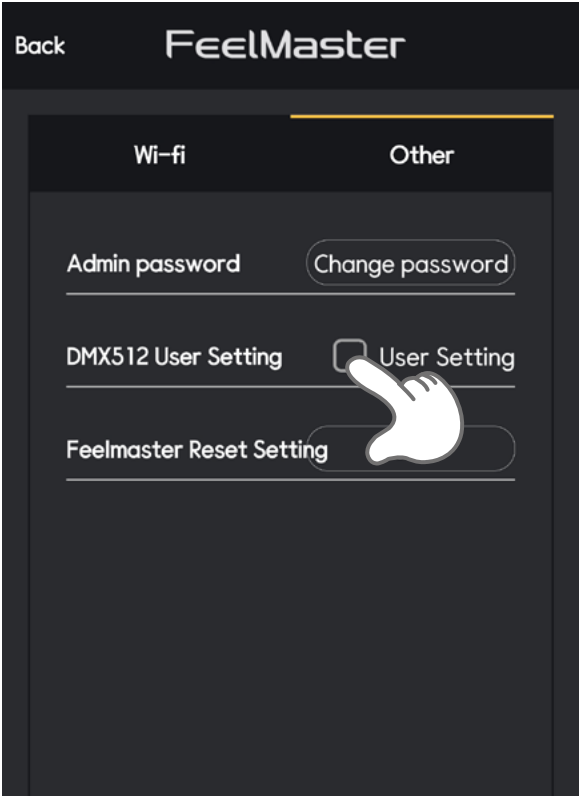
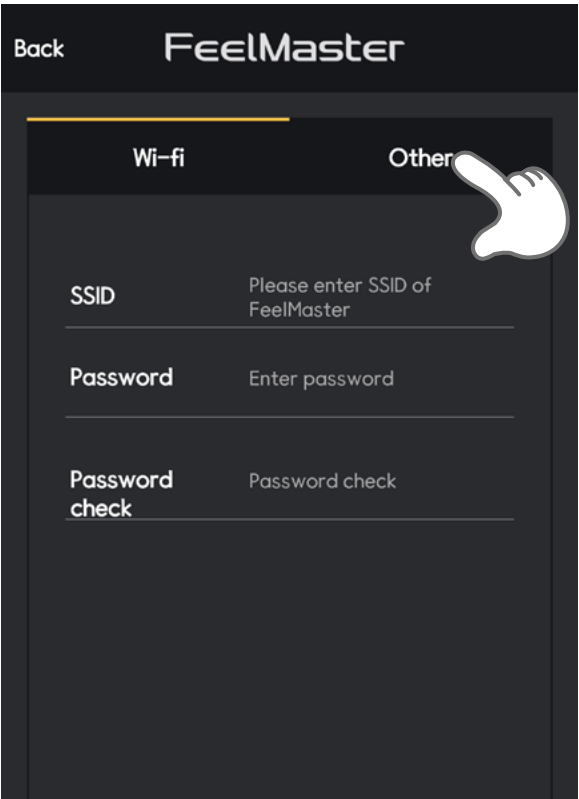
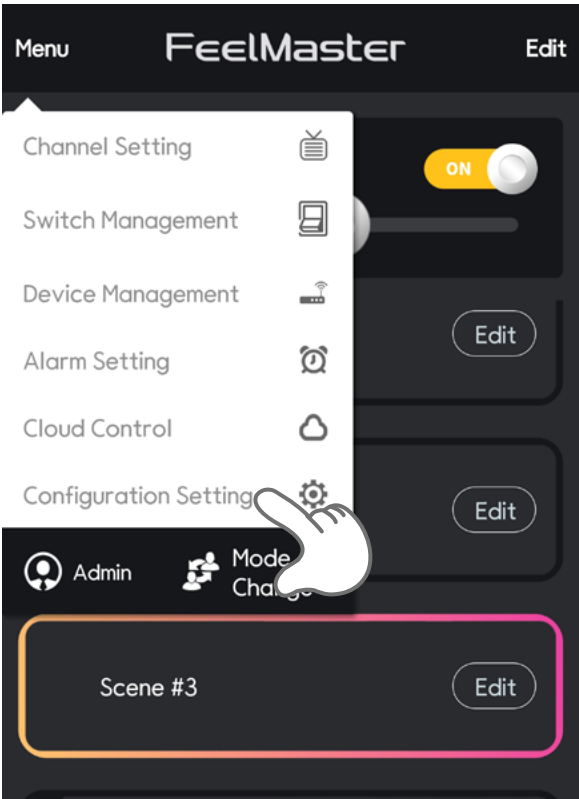
12-2> Password management
You can change the password of administration as shown below.





12-3〉DMX512 Setting

Please refer to the manual for DMX512 control in the appendix manual.



12-4> Reset the device

You can reset all the setting values. All the devices and scenes will be deleted.

