

# FSA-P2D

This manual can be revised without notice to improve product



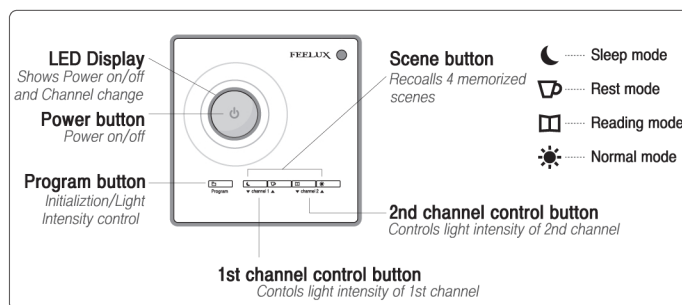
## WARNING INFORMATION:

Meaning of crossed-out wheeled dustbin: Do not dispose of electrical appliances as unsorted municipal waste, use separate collection facilities. Contact your local government for information regarding the collection systems available. If electrical appliances are disposed of in landfills or dumps, hazardous substances can leak into the groundwater and get into the foodchain, damaging your health and well-being. When replacing old appliances with new ones, the retailer is legally obligated to take back your old appliance for disposal at least free of charge.

## Specification

<b>Model Name</b>	FSA-P2D	<b>Output Signal</b>	PWM 2ch (Max. 10pcs/ch)
<b>Rated Input</b>	220-240VAC, 50/60Hz, 2.4A	<b>Connection</b>	DimSlim/DimSlimLine
<b>Rated Output</b>	Max. 350W/ch		

## Function



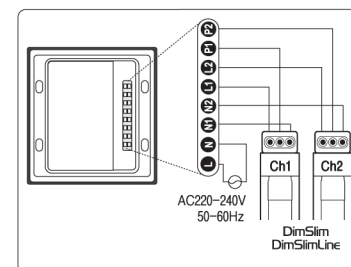
## How To Install

### Wiring method

1. Turn off the power before wiring.
2. Connect L/N with power cord.
3. Connect L1/P1/N1 to Channel 1.
4. Connect L2/P2/N2 to Channel 2.
5. Plug in.

#### Caution

Applicable wire : AWG 24-14 (0.2-2.08mm)  
Stripped length : 10-11mm  
L/N/P should be connected as specified.  
L-Brown, N-Blue, P-Black

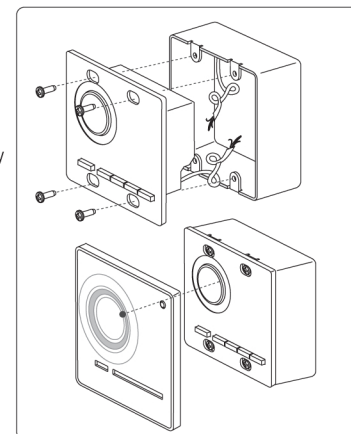


### Installation method

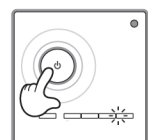
1. Turn off the power before installation.
2. Connect wire according to wiring method.
3. Put the body into the junction box carefully for connected wires not to be pressed. (Junction box is not included)
4. Fix the body to the junction box with included screws.
5. Assemble the surface cover.

#### Caution

Do not screw up excessively.



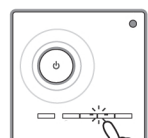
## How To Use



### On/Off

Push Power button [ ]

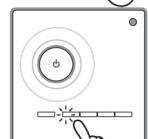
\* LED Display  
On : Blue LED on. LED display at current scene Off : White LED on



### Scene Calling

Change the light by recalling four memorized scene with Scene button [ ] - [ ]

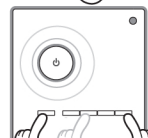
\* You can also turn on the light with Scene button. Push power button to turn off the light



### Bedtime setting

Push Sleep button [ ] to choose bedtime interval.

\* Light turns off automatically after specified time.  
\* Bedtime interval : 15min, → 30min, → 60min, → normal  
\* LED display shows different flickering by each bedtime interval.



### Saving Scene

Select Scene button [ ] - [ ] → Push Program button [ ] more than 3sec. → Control channel 1,2 button [ ] [ ] → Push Program button [ ] → Saving completed

\* If Program button [ ] is not pushed after changing light, then the changed scene is not saved. If it is on/off with Power button [ ], then the changed light works.  
\* When light of a channel is changed, LED display of Power button [ ] is also changed to same light intensity with lamps.

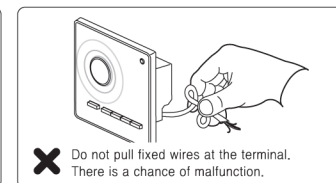
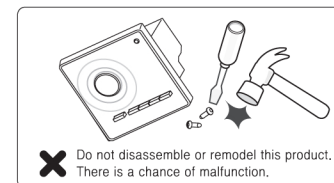
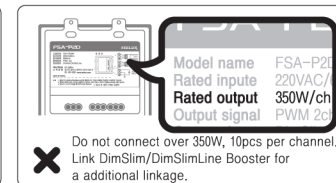
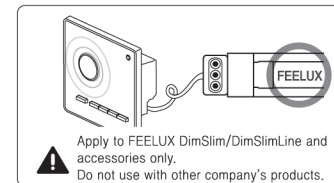
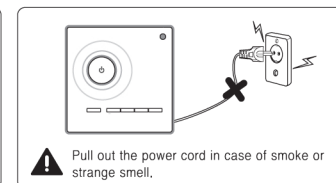
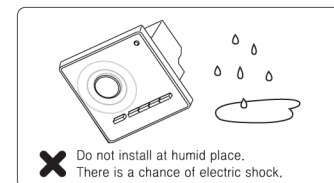
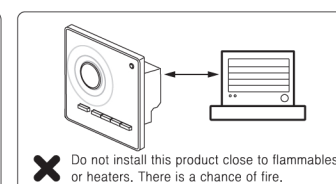
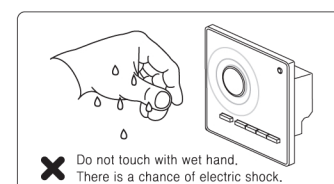


### Initialization and Scene Test

Push Sleep button [ ] → Push Power button [ ] more than 3sec. → Push Reading button [ ] more than 3sec. → Initialization and Scene Test start.

\* Initialization and Scene test are completed turning off the light after separate light of scenes rotates by turns.

## Safety Precaution



## Warranty

One-year warranty, with one-to-one free replacement after inspection. (excluding breakage due to transportation & mis-handling)