

FSA-P2D

Solid-state Dimming Controls
For USA

M A N U A L



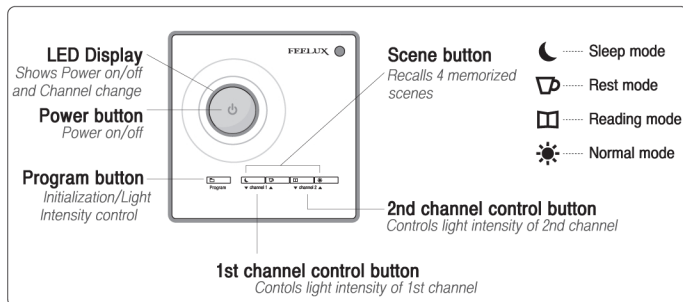
- **CAUTION:** To reduce the risk of overheating and possible damage to other Equipment, do not install to control a receptacle or motor-operated appliance
- **ATTENTION:** Gradateurs commandant un transformateur - afin de reduire le Risque de surchauffe et la possibilite d'endommagement a d'autres materiels, Ne pas installer pour commander une prise ou un appareil a moteur

This manual can be revised without notice for product enhancements.

Specification

Model	FSA-P2D	Output Signal	Max.10pcs per channel (Max.2 channel)
Rated Input	120VAC, 2.5A, 60Hz		
Rated Output	150W per channel		
Lighting Load	For control of permanently Installed Feelux ballast DimSlim or DimSlimLine fixtures only.		

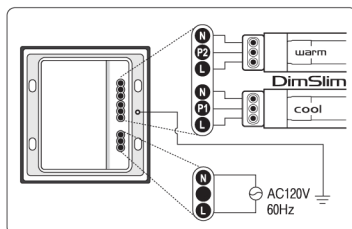
Function



How To Install

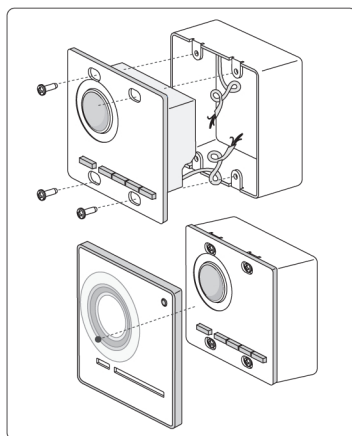
Wiring method

1. Turn off the electricity before wiring.
2. Use AWG 24-14 wire only
3. Connect N/L according to the wiring diagram (L-Black, N-White, P-Red)



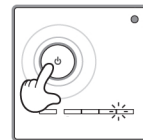
Installation method

1. Turn off the Electricity before installation.
2. Connect wires according to wiring method.
3. Wires should be fixed tightly.
4. Put the dimmer into a listed double gang box and fix with screws included.
5. Do not Over tighten.
6. Assemble surface cover.
7. Model FSA-P2D is not suitable for multi-unit gang installation.



FSA-P2D

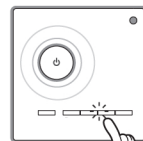
How To Use



On/Off

Press Power button []

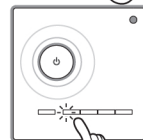
* LED Display
On : Blue LED on, LED display at current scene Off : White LED on



Light Scene Changing

Change the light by recalling four memorized scene with Scene button [] - []

* You can also turn on the light with Scene button, Press power button to turn off the light.

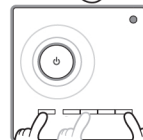


Bedtime setting

Timer automatically turns lights off at Sleep button [].

Intervals : Press once for 15min, twice for 30min, three times for 60min and four times for sleep mode

* Each interval has different LED display.



Programming Light Scene

1. Press Scene button [] - [] you wish to program
2. Press and hold Program button [] for 3 seconds
3. Adjust color and brightness to liking using through Channel 1,2 button [] []
4. Press program button [] to save

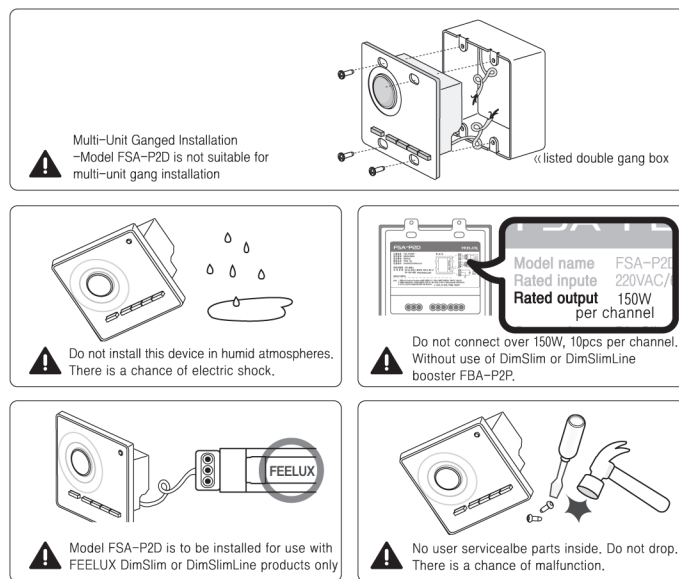


To Reset to factory Setting

1. Press Sleep button []
2. Press and hold Power button [] for 3 seconds
3. Press Read button [] for 3 seconds

* Then Reset and Automatic test simultaneously

Safety Precaution



- **Warranty** One-year warranty, with one-to-one free replacement after inspection (excluding breakage due to transportation & mis-handling)