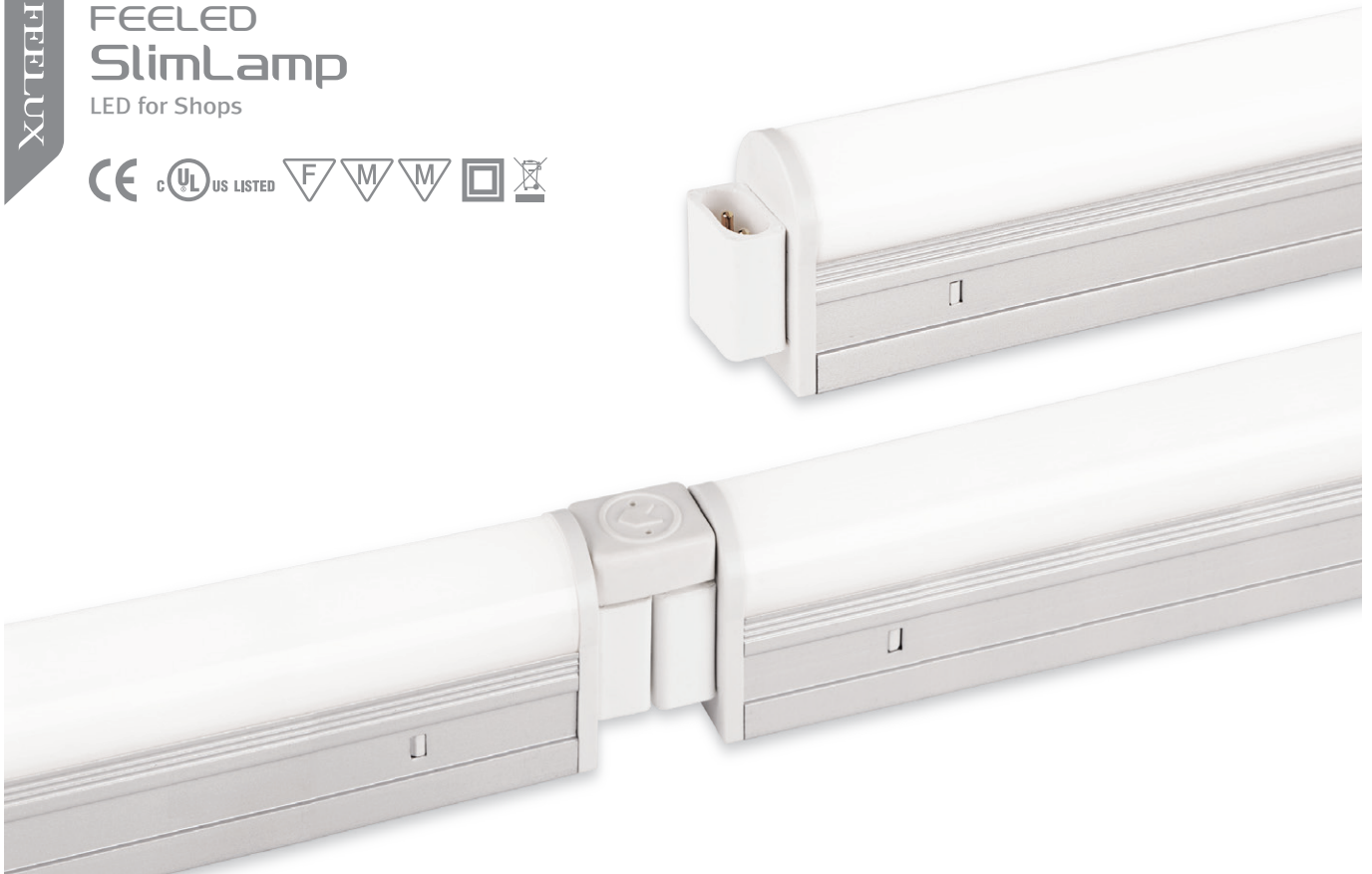


FEELED SlimLamp

LED for Shops



FEELED SlimLamp

An evolutionary alternative to our world renowned T5 fluorescent fixture, Feelux introduces the SlimLamp LED. Utilizing the same body and quick connectors of its predecessor, the SlimLamp LED stays true to its heritage. Current customers simply replace their existing Fluorescent SlimLamp with the new LED version, making it easy to use in existing environments, displays, and cabinets. New customers benefit from over ten years of quality and performance that made the SlimLamp and continue on in the SlimLamp LED.



Product Features

- AC power driver built in (SMPS is not needed)
- Transparent, Ivory white Diffuser
- Isolation circuit applied
- Compatible with accessories for fluorescent SlimLamp

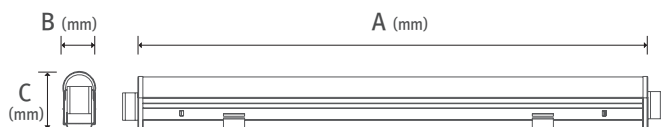
Notice

- Max. connection : 400W
10W(40pcs), 15W(26pcs), 20W(20pcs)

Specification

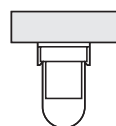
- Frequency range : 50/60Hz
- Voltage : AC 220~240V , 100~130V
- Operating temperature : 0~45°C
- Lamp life : 40,000hr
- Energy efficiency : 65 lm/W
- Available color : 2700K, 3000K, 3500K, 4000K, 6000K
- Color rendering $R_a > 80$

Dimension

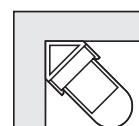


Model Name	Lamp Power (W)	A (mm)	B (mm)	C (mm)
LSL5A4B23RM/T	5	295	22.6	37.5
LSL10A4B23RM/T	10	595	22.6	37.5
LSL15A4B23RM/T	15	895	22.6	37.5
LSL20A4B23RM/T	20	1195	22.6	37.5

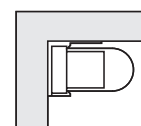
Installation



Standard Mounting



Corner Mounting



Angular Configuration

Accessories

a Connecting cables

DLPTC/T	DLPTC1/T	DLPTC2/T	DLPTC 4/T	DLPTC6/T
150mm(6inch)	300mm(1feet)	600mm(2feet)	1200mm(4feet)	1800mm(6feet)

b Direct connector

DLCLP/T

Power cord

General type : © DLPC230/T | Vertical type : ④ DLPC230/SM2/T (straight type)

e Mounting bracket

SL-BRACKET (180°), SL-BRACKET1 (45°), SL-BRACKET2 (90°)

i On/off switch

DLSB/T

