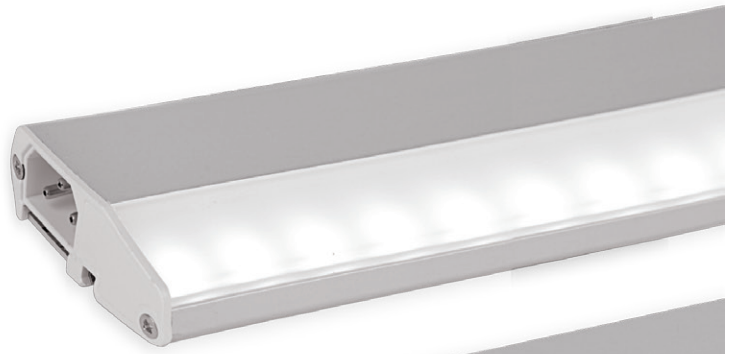


FEELED TUNELight 2

Dimmable LED for cabinet



Dimming



FEELED TUNELight 2

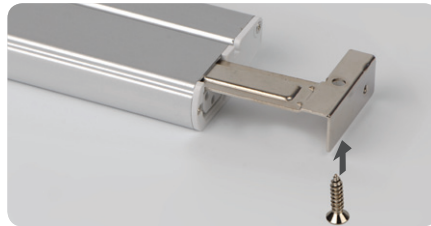
Slim and simple designed body is perfect for cabinet display.
The best solution for new and replacement display stand.



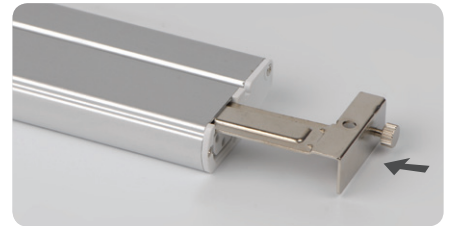
Installation



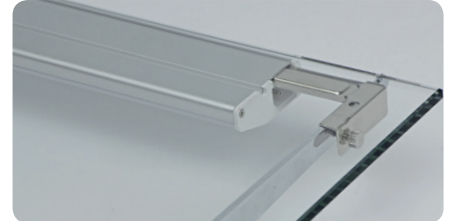
Mounting clip



Wooden shelf



Glass shelf



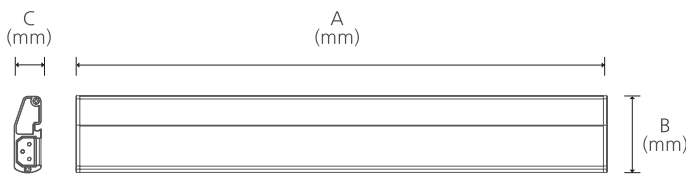
Product Features

- AC power driver built in
- Isolation circuit applied

Notice

- Max.connection(Dimming) : 10pcs
- Max.connection(Non-Dimming) : 400W
7W(57 pcs), 11W(36 pcs), 15W(26 pcs)

Dimension



Model Name	Lamp Power (W)	A (mm)	B (mm)	C (mm)
TUN7A4B23/T	7	526	52	18
TUN11A4B23/T	11	836	52	18
TUN15A4B23/T	15	1145	52	18

Accessories

ⓐ Connecting cable for Non-dimming

TUNPTC/T	TUNPTC1/T	TUNPTC2/T	TUNPTC4/T	TUNPTC6/T
150mm(6inch)	300mm(1feet)	600mm(2feet)	1200mm(4feet)	1800mm(6feet)

ⓑ Connecting cable for dimming

DTUNPTC/T	DTUNPTC1/T	DTUNPTC2/T	DTUNPTC4/T	DTUNPTC6/T
150mm(6inch)	300mm(1feet)	600mm(2feet)	1200mm(4feet)	1800mm(6feet)

Power cord

General type : Ⓒ TUNPC230/T Vertical type : ⓐ TUNPC230/SM2/T

Open power cord : Between Tunelight2 & dimming controller

General type : ⓐ DTUNOPC230/T Vertical type : ⓐ DTUNOPC230/SM2/T

ⓐ Direct connector : TUNCPL

ⓑ End Cap : TUN-CAP

Mounting bracket

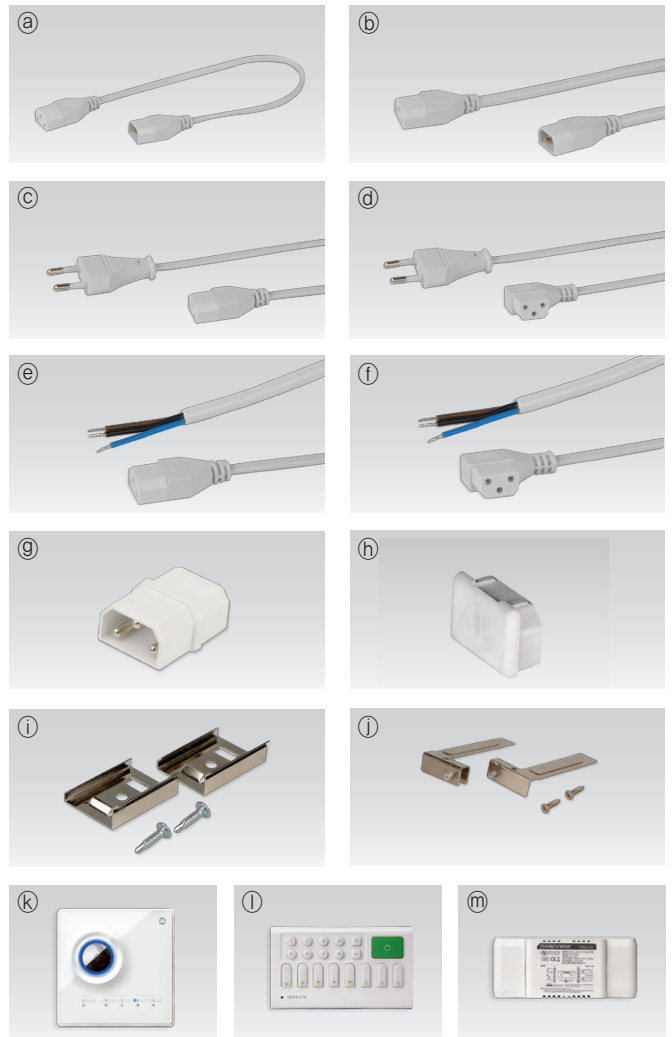
ⓐ TUN-Bracket, ⓐ TUN-Bracket1

★ Dimming controller

ⓐ Dimming switch, ⓐ Wireless control, ⓐ Interface

Specification

- Frequency Range : 50/60Hz
- Voltage : AC 100-240V
- Operating temperature : 0-45°C
- Life time : 40,000hrs
- Energy efficiency : 65lm/W
- Available color : 2700K, 3000K, 3500K, 4000K, 6000K
- Color rendering index(CRI) : Ra > 80



★ More detail information about dimming controller, please refer to the page 82 ~ page 87