

FEELUX

## MonoRail Spot

LED for Display, Cabinet, Furniture & Cove

Slide and Swivel Mini LED Spotlight





## Product Features

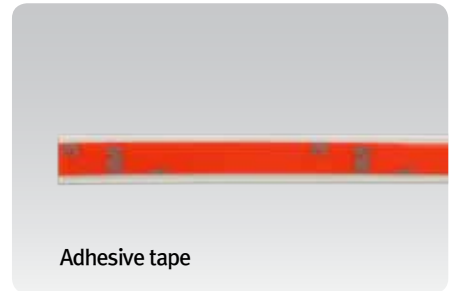
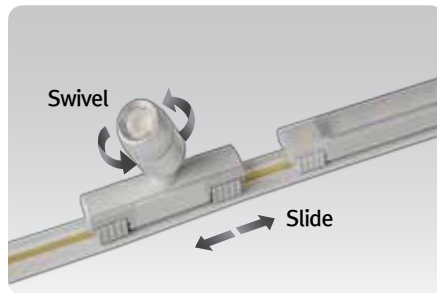
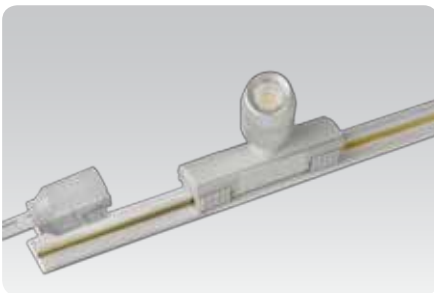
- Compatible and linkable with MonoRail system
- Slide and swivel mini LED spotlight
- Suitable for furniture and showcase application
- Simple Plug & Play connection to the power track
- Available in silver or black
- To be used with constant voltage DC 24V driver

## Specification

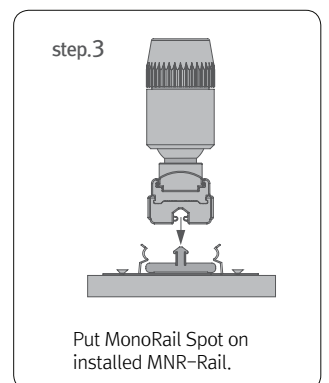
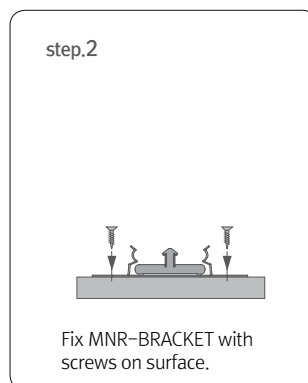
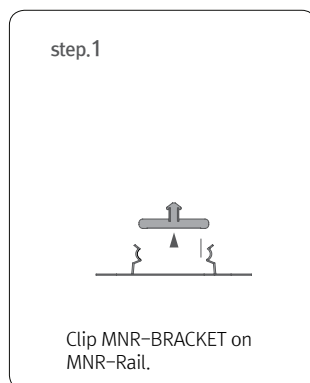
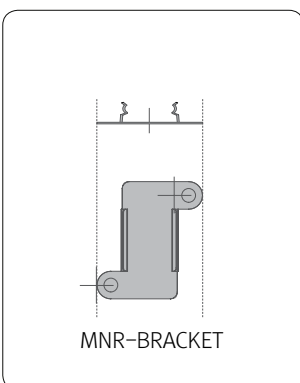
- Voltage : DC 24V
- Operating temperature : 0~45°C
- Lamp life : 50,000hrs / 70%
- Available color : 2700K, 3000K, 4000K, 6000K
- Color rendering : Ra > 85
- Energy efficiency : 70lm/W
- Degree of protection : IP20
- Beam angle : 15° , 30°
- Total energy consumption of 1.3W



## Easy connection

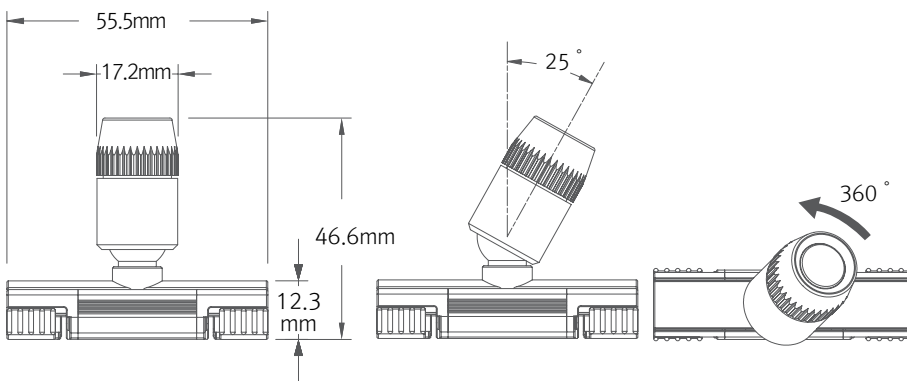


## Installation

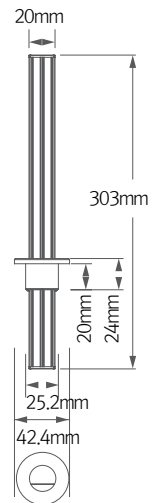


## Dimension

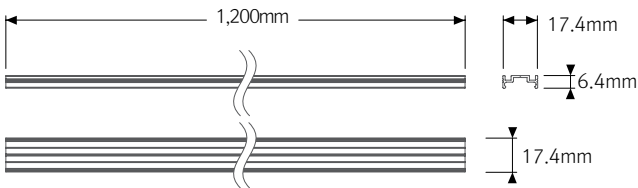
\* Fixture



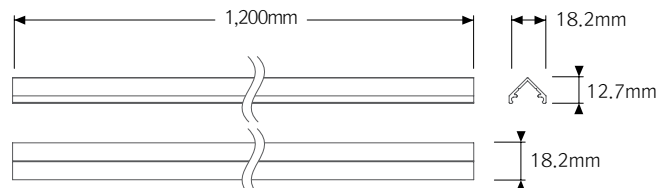
\* MNR-Rail extrusion pole



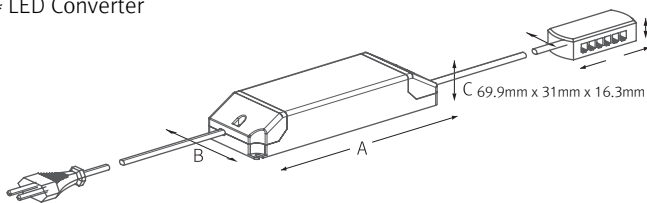
\* MNR-Rail extrusion line



\* MNR-Rail extrusion corner



\* LED Converter



| Model name   | A (mm) | B (mm) | C (mm) |
|--------------|--------|--------|--------|
| FLC15-24V/T  | 121    | 45     | 16     |
| FLC30-24V/T  | 150    | 41     | 31     |
| FLC75-24V/T  | 180    | 60     | 32     |
| FLC200-24V/T | 250    | 65     | 38     |

## Max. connection

- MonoRail Spot : 180W in one row (Single power feed)
- LED Driver

| LED Driver<br>Model Name | Max. units for LED Driver |         |         |          |
|--------------------------|---------------------------|---------|---------|----------|
|                          | 24V/15W                   | 24V/30W | 24V/75W | 24V/200W |
| MRS1 40K-24V-SV          | 10                        | 20      | 52      | 140      |

## Accessories



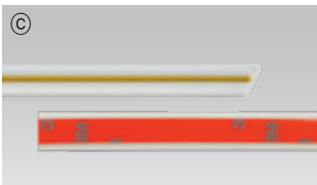
### Ⓐ MonoRail Spot

| Beam angle | Silver             | Black              |
|------------|--------------------|--------------------|
| 15°        | MRS1 40K-24V-SV-15 | MRS1 40K-24V-BK-15 |
| 30°        | MRS1 40K-24V-SV-30 | MRS1 40K-24V-BK-30 |



### Ⓑ Power supply track : MNR-Rail (20m)

Power supply track in Roll without adhesive  
Color : White, Gray, Black



### Ⓒ Power supply track : MNR-Rail (1.2m)

Power supply track with adhesive tape  
Color : White, Gray, Black



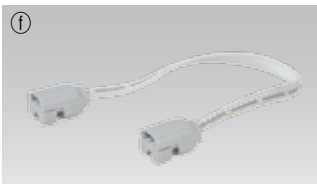
### Ⓓ Adhesive tape

Adhesive tape for MNR-Rail (16.5m)



### Ⓔ Power supply cable to the MNR-Rail : MNRPC (2500mm)

120W in one row (w/ terminal block)  
180W in one row (w/o terminal block)



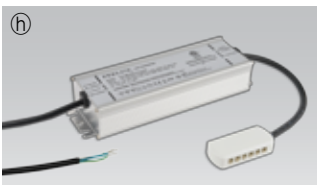
### Ⓕ Connecting cable between MNR-Rail

| MNRPTC       | MNRPTC1      | MNRPTC2      | MNRPTC4       | MNRPTC6       |
|--------------|--------------|--------------|---------------|---------------|
| 150mm(6inch) | 300mm(1feet) | 600mm(1feet) | 1200mm(4feet) | 1800mm(6feet) |



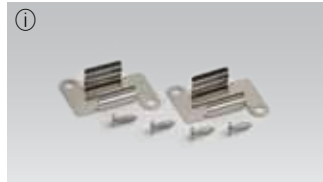
### Ⓖ LED Driver with 6way distributor, with power cord (1800mm)

| Part NO  | FLC15-24V/T | FLC30-24V/T | FLC75-24V/T |
|----------|-------------|-------------|-------------|
| Capacity | 24V/15W     | 24V/30W     | 24V/75W     |

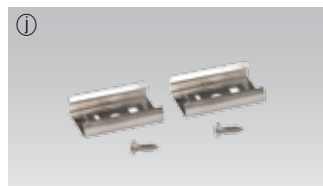


### Ⓗ LED Driver : FLC200-24V/T (200W 24V)

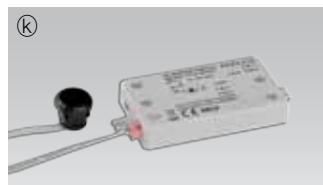
LED Driver With 6way distributor



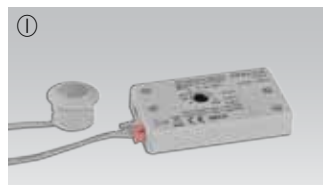
**i MonoRail bracket : MNR-BRACKET (standard)**



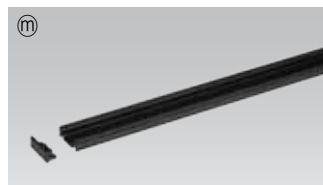
**j MonoRail bracket : MNR-BRACKET1 (optional)**



**k Door and motion detection sensor (DC) : FLS-M24V  
Voltage : DC 24V**



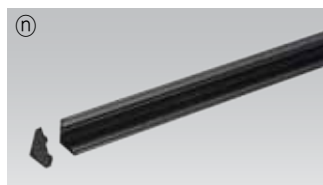
**l Human-body detection sensor (DC) : FLS-P24V  
Voltage : DC 24V**



**m MNR-Rail extrusion line (1.2m)**

| Silver     | Black      |
|------------|------------|
| MNR-EXL-SV | MNR-EXL-BK |

Without MNR-Rail



**n MNR-Rail extrusion corner (1.2m)**

| Silver     | Black      |
|------------|------------|
| MNR-EXC-SV | MNR-EXC-BK |

Without MNR-Rail



**o MNR-Rail extrusion pole (300mm)**

| Silver     | Black      |
|------------|------------|
| MNR-EXP-SV | MNR-EXP-BK |

With MNR-Rail



**p End cap : MNR-CAP  
Color : White, Gray, Black**

\* More detail information about accessories, please refer to MonoRail page