

FEELUX

FLX Stix ODV

LED for Outdoor installation

Light Creatures in the Night



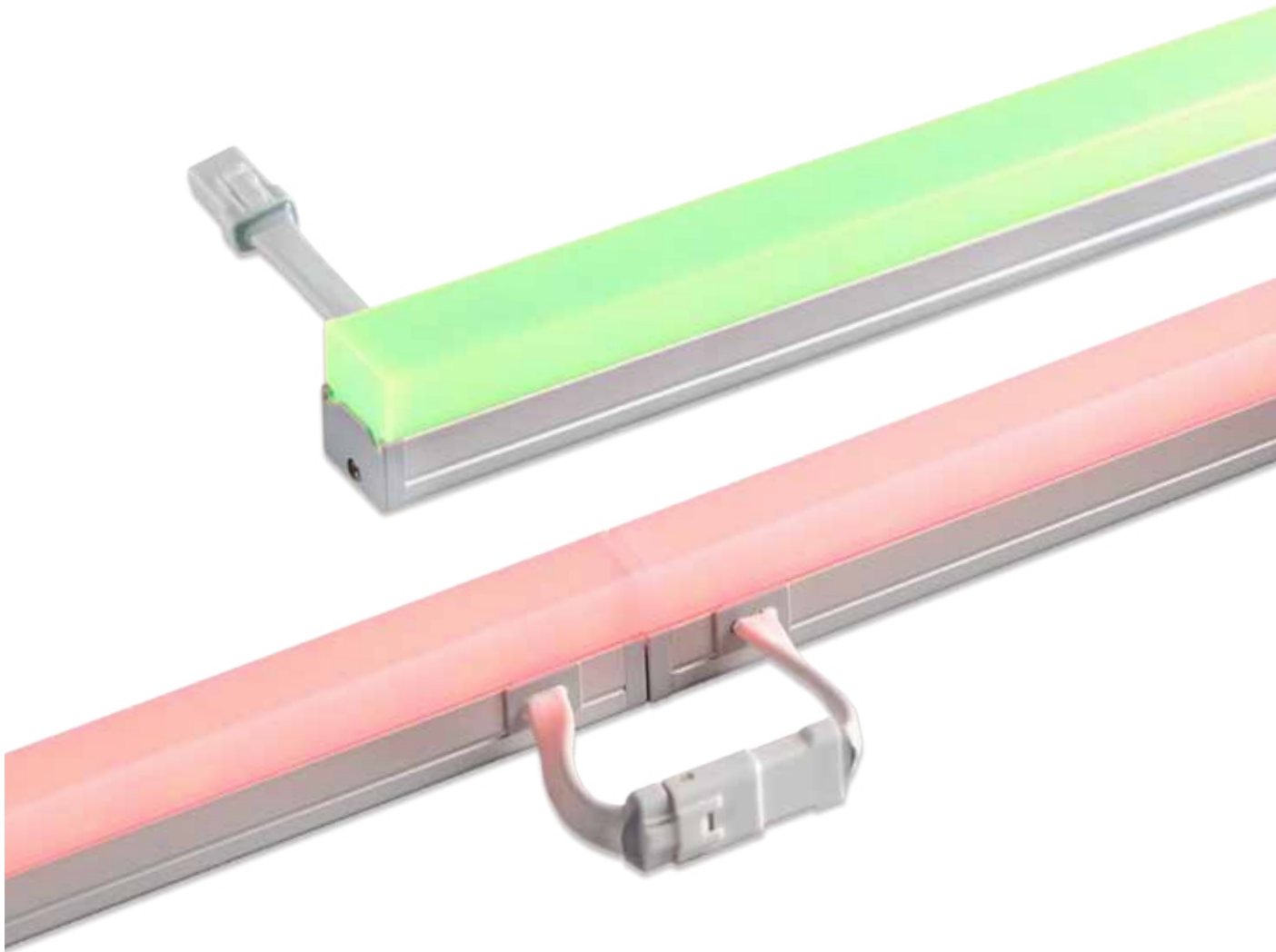


Product Features

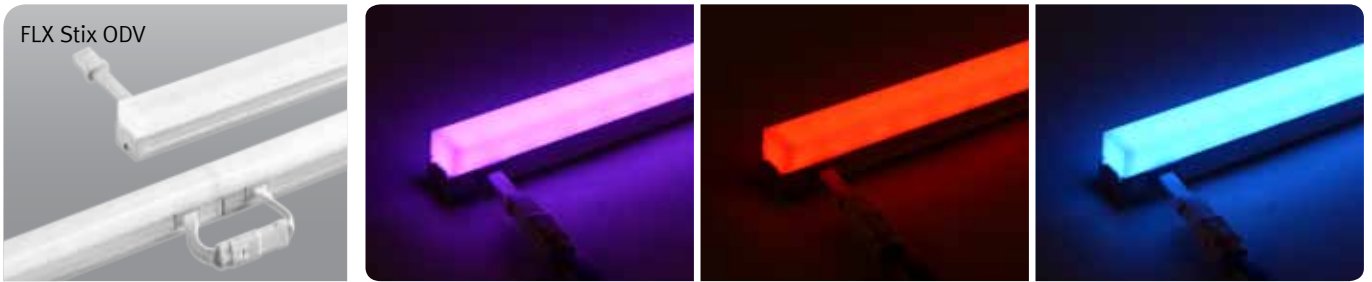
- Slim linear LED with color changing output and a dimmable system
- Various length available
- To be used with constant voltage DC 24 driver

Specification

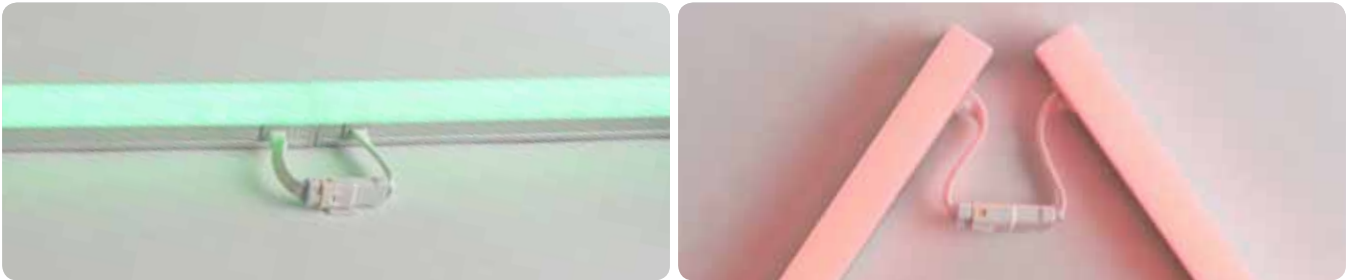
- Voltage : DC 24V
- Operating temperature : 0~45°C
- Lamp life : 50,000hrs / 70%
- Available color : 2700K, 3000K, 4000K, RGB
- Color rendering : Ra>85
- Energy efficiency : 85lm/W
- Degree of protection : IP66



Color changing

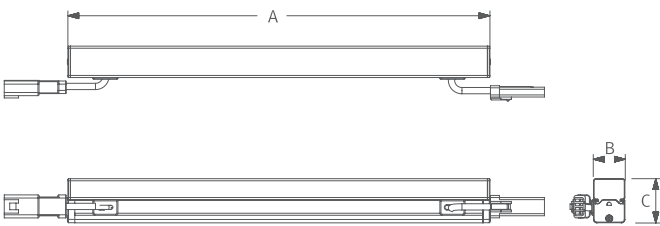


Easy connection



Dimension

* Fixture

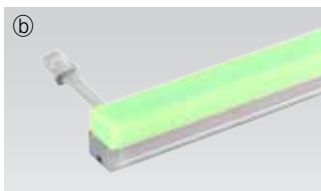


Model Name	Power Input (V)	Lamp Power (W)	A (mm)	B (mm)	C (mm)
ODV3 40K-24V	DC24	2.9	140.4	15	22.1
ODV6 40K-24V	DC24	5.8	280.5	15	22.1
ODV12 40K-24V	DC24	11.6	560	15	22.1
ODV18 40K-24V	DC24	17.4	839	15	22.1
ODV4 RGB-24V	DC24	4.2	188.5	15	22.1
ODV6 RGB-24V	DC24	6.2	280.5	15	22.1
ODV12 RGB-24V	DC24	12.5	560	15	22.1
ODV18 RGB-24V	DC24	18.7	839	15	22.1

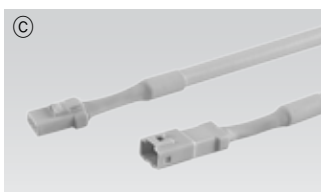
Accessories



(a) Fixture : FLX Stix ODV
 ODV3 40K-24V (3W)
 ODV6 40K-24V (6W)
 ODV12 40K-24V (12W)
 ODV18 40K-24V (18W)

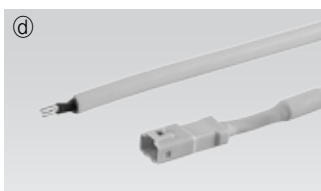


(b) Fixture : FLX Stix ODV
 ODV4 RGB-24V (4W)
 ODV6 RGB-24V (6W)
 ODV12 RGB-24V (12W)
 ODV18 RGB-24V (18W)



(c) Connecting cable (Between FLX Stix ODV & FLX Stix ODV)

ODVPTC	ODVPTC1	ODVPTC2	ODVPTC4	ODVPTC6
150mm(6inch)	300mm(1feet)	600mm(2feet)	1200mm(4feet)	1800mm(6feet)



(d) Power cable (Open power cable for FLX Stix ODV) : ODVPC



(e) Mounting bracket : ODV-BRACKET
 Included in fixture



(f) LED Driver : FLC200-24V/T (200W 24V)
 IP66



(g) Dimming Interface (1-10V)
 FDC-L10 (Max.100W)



(h) Dimming Interface (0-10/1-10,DMX512)
 FDA-L2MO : Max. 200W (100W/CH, 2CH)
 FDA-L5M : Max. 200W (100W/CH, 5CH)



(i) End cap : ODV-CAP
 Included in fixture